

Product datasheet for **RC202423**

BIN1 (NM_139350) Human Tagged ORF Clone

Product data:

Product Type:	Expression Plasmids
Product Name:	BIN1 (NM_139350) Human Tagged ORF Clone
Tag:	Myc-DDK
Symbol:	BIN1
Synonyms:	AMPH2; AMPHL; CNM2; SH3P9
Mammalian Cell Selection:	Neomycin
Vector:	pCMV6-Entry (PS100001)
E. coli Selection:	Kanamycin (25 ug/mL)



[View online »](#)

ORF Nucleotide
Sequence:

>RC202423 ORF sequence
Red=Cloning site Blue=ORF Green=Tags(s)

TTTTGTAATACGACTCACTATAGGGCGGCCGGGAATTCGTCGACTGGATCCGGTACCGAGGAGATCTGCC
GCCGCGATCGCC

ATGGCAGAGATGGGCAGTAAAGGGGTGACGGCGGGAAGATCGCCAGCAACGTGCAGAAGAAGCTCACCC
GCGCGCAGGAGAAGGTTCTCCAGAAGCTGGGGAAGGCAGATGAGACCAAGGATGAGCAGTTTGAGCAGTG
CGTCCAGAATTTCAACAAGCAGCTGACGGAGGGCACCCGGCTGCAGAAGGATCTCCGGACCTACCTGGCC
TCCGTCAAAGCCATGCACGAGGCTTCCAAGAAGCTGAATGAGTGTCTGCAGGAGGTGATGAGCCCGATT
GGCCCGCAGGGATGAGGCAAACAAGATCGCAGAGAACAACGACCTGCTGTGGATGGATTACCACCAGAA
GCTGGTGGACCAGGCGTGTGACCATGGACACGTACCTGGGCCAGTTCCCCGACATCAAGTCACGCATT
GCCAAGCGGGGCGCAAGCTGGTGGACTACGACAGTCCCGGCACCCTACGAGTCCCTTCAAACCGCCA
AAAAGAAGGATGAAGCCAAAATTGCCAAGGCCGAGGAGGAGCTCATCAAAGCCCAGAAGGTGTTTGAGGA
GATGAATGTGGATCTGCAGGAGGAGCTGCCGTCCCTGTGGAACAGCCGCTAGGTTTCTACGTCAACACG
TTCCAGAGCATCGCGGGCTGGAGGAAAATTCCACAAGGAGATGAGCAAGCTCAACCAGAACCTCAATG
ATGTGCTGGTCCGCTGGAGAAGCAACCGGGAGCAACACCTTACGGTCAAGGCCACGCCAGTACAA
CGCGCCTGCAAAAGGGAACAAGAGCCCTTCGCCTCCAGATGGCTCCCCTGCCGCCACCCCGAGATCAGA
GTCAACCACGAGCCAGAGCCGGCTGGCGGGGCCACGCCGGGGCCACCCTCCCAAGTCCCATCTCAGC
CAGCAGAGGCCTCGGAGTGGCGGGTGGACCCAACTGCGGCTGGAGCCAGGAGCCAGGGGAGACGGC
GGCAAGTGAAGCAGCCTCCAGCTCTCTTCTGCTGTGCTGGTGGAGACCTCCCAGCAACTGTGAATGGC
ACCGTGGAGGGCGGCAGTGGGGCCGGCGCTTGGACCTGCCCCAGGTTTTCATGTTCAAGGTACAGGCC
AGCAGACTACACGGCCACTGACACAGACGAGCTGCAGCTCAGGGCTGGTGTGTTGCTGGTGTATCCC
CTTCCAGAACCCTGAAGAGCAGGATGAAGGCTGGCTCATGGGCGTGAAGGAGAGCGACTGGAACCGCAC
AAGGAGCTGAGAAGTCCGCTGGCGTCTTCCCGAGAACTTCACTGAGAGGGTCCCA

ACGCGTACGCGGCCGCTCGAGCAGAACTCATCTCAGAAGAGGATCTGGCAGCAAATGATATCCTGGATT
ACAAGGATGACGACGATAAGGTTTAA

Protein Sequence:

>RC202423 protein sequence
Red=Cloning site Green=Tags(s)

MAEMGSKGVTAGKIASNVQKKLTRAQEKVLQKLGKADETKDEQFEQCVQNFNKQLTEGTRLQKDLRTYLA
SVKAMHEASKKLNELQEVYEPDWPGRDEANKIAENNDLLWMDYHQKLVQDQALLTMDTYLGGFPDIKSRI
AKRGRKLVYDSARHHYESLQTAKKKDEAKIAKAEELIKAQKVFEEMNVDLQEELPSLWNSRVGFYVNT
FQSIAGLEENFHKEMSKLNQNLNDVLVGLEKQHGSNFTVKAQPSDNAPAKGNKSPSPDGSPAATPEIR
VNHEPEPAGGATPGATLPKSPSQPAEASEVAGGTQPAAGAQPETAASEAASSSLPAVVVETFPATVNG
TVEGGSAGRLDLPPGFMFKVQAQHDYATDDELQLRAGDVVLVIPFQNPPEEQDEGWLMGVKESDWNQH
KELEKCRGVFPENFTERVP

TRTRPLEQKLISEEDLAANDILDYKDDDDKV

Chromatograms:

https://cdn.origene.com/chromatograms/mk6150_g11.zip

Restriction Sites:

SgfI-MluI

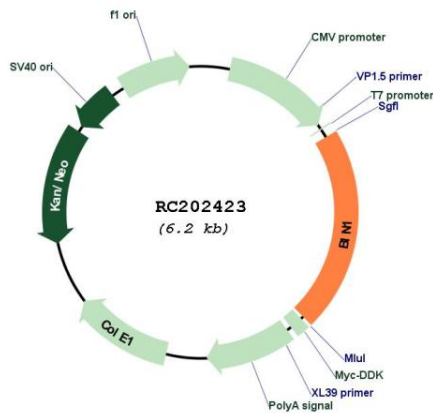
UniProt ID: [O00499](#)

Cytogenetics: 2q14.3

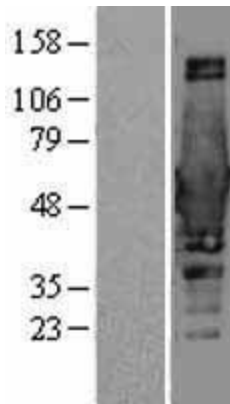
MW: 48.3 kDa

Gene Summary: This gene encodes several isoforms of a nucleocytoplasmic adaptor protein, one of which was initially identified as a MYC-interacting protein with features of a tumor suppressor. Isoforms that are expressed in the central nervous system may be involved in synaptic vesicle endocytosis and may interact with dynamin, synaptojanin, endophilin, and clathrin. Isoforms that are expressed in muscle and ubiquitously expressed isoforms localize to the cytoplasm and nucleus and activate a caspase-independent apoptotic process. Studies in mouse suggest that this gene plays an important role in cardiac muscle development. Alternate splicing of the gene results in several transcript variants encoding different isoforms. Aberrant splice variants expressed in tumor cell lines have also been described. [provided by RefSeq, Mar 2016]

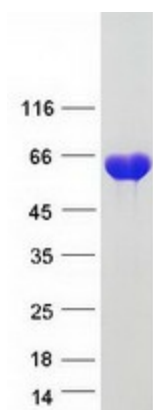
Product images:



Circular map for RC202423



Western blot validation of overexpression lysate (Cat# [LY403388]) using anti-DDK antibody (Cat# [TA50011-100]). Left: Cell lysates from untransfected HEK293T cells; Right: Cell lysates from HEK293T cells transfected with RC202423 using transfection reagent MegaTran 2.0 (Cat# [TT210002]).



Coomassie blue staining of purified BIN1 protein (Cat# [TP302423]). The protein was produced from HEK293T cells transfected with BIN1 cDNA clone (Cat# RC202423) using MegaTran 2.0 (Cat# [TT210002]).