

Product datasheet for RC202422

Centrin 2 (CETN2) (NM_004344) Human Tagged ORF Clone

Product data:

Product Type: Expression Plasmids
Product Name: Centrin 2 (CETN2) (NM_004344) Human Tagged ORF Clone
Tag: Myc-DDK
Symbol: Centrin 2
Synonyms: CALT; CEN2
Mammalian Cell Selection: Neomycin
Vector: pCMV6-Entry (PS100001)
E. coli Selection: Kanamycin (25 ug/mL)
ORF Nucleotide Sequence: >RC202422 ORF sequence
Red=Cloning site Blue=ORF Green=Tags(s)

TTTTGTAATACGACTCACTATAGGGCGGCCGGAATTCGTCGACTGGATCCGGTACCGAGGAGATCTGCC
GCC**CGATCGCC**

ATGGCCTCCAACCTTAAGAAGGCAAACATGGCATCAAGTCTCAGCGAAAAAGAATGAGCCCTAAGCCTG
AGCTTACTGAAGAGCAAAAGCAGGAGATCCGGGAAGCTTTTGATCTTTTCGATGCGGATGGAAGTGGCAC
CATAGATGTTAAAGAAGTGAAGTGGCAATGAGGGCCCTGGGCTTTGAACCAAGAAAGAAGAAATTAAG
AAAATGATAAGTAAAATGATAAGGAAGGACAGGAAAAATGAACCTTTGGTGACTTTTTAACTGTGATGA
CCCAGAAAATGTCTGAGAAAGATACTAAAGAAGAAATCCTGAAAGCTTTCAAGCTCTTTGATGATGATGA
AACTGGGAAGATTCGTTCAAAAATCTGAAACGGTGGCCAAGGAGTTGGGTGAGAACCTGACTGATGAG
GAGCTGCAGGAAATGATTGATGAAGCTGATCGAGATGGAGATGGAGAGGTGAGTGAAGAGTTCTCTGC
GCATCATGAAAAAGACCAGCCTCTAT

AG**CGGACCG**ACGCGTACGCGCCGCTCGAGCAGAACTCATCTCAGAAGAGGATCTGGCAGCAAATGATATCC
TGGATTACAAGGATGACGACGATAAGGTTTAA

Protein Sequence: >RC202422 protein sequence
Red=Cloning site Green=Tags(s)

MASNFKKANMASSQRKRMSPKPEL TEEQKQEIREAFDLFDADGTGTIDVKELKVAMRALGFEPKKEEIK
KMISEIDKEGTGMNFGDFLTVMTQKMSEKDTKEEILKAFKLFDDDETGKISFKNLKRVAKELGENLTDE
ELQEMIDEADRDGDGEVSEQEFRLIMKKTSLY

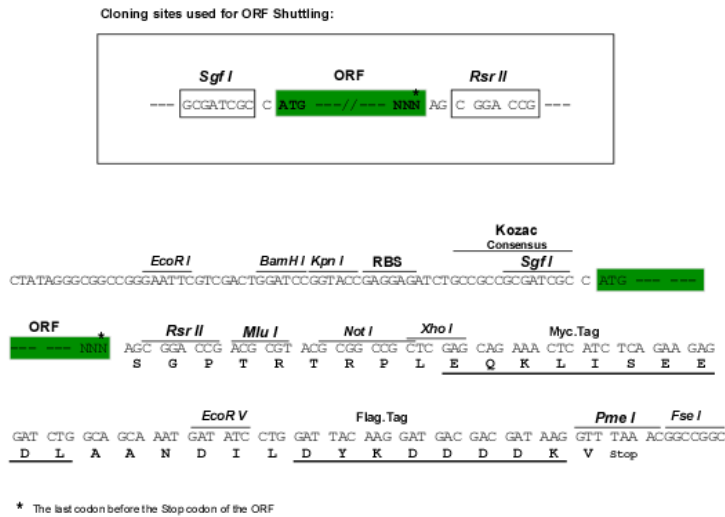
SGPTRTRPLEQKLI SEEDLAANDILDYKDDDDKV

Chromatograms: https://cdn.origene.com/chromatograms/mk6221_e06.zip



Restriction Sites: SgfI-RsrII

Cloning Scheme:



ACCN: NM_004344

ORF Size: 516 bp

OTI Disclaimer: The molecular sequence of this clone aligns with the gene accession number as a point of reference only. However, individual transcript sequences of the same gene can differ through naturally occurring variations (e.g. polymorphisms), each with its own valid existence. This clone is substantially in agreement with the reference, but a complete review of all prevailing variants is recommended prior to use. [More info](#)

OTI Annotation: This clone was engineered to express the complete ORF with an expression tag. Expression varies depending on the nature of the gene.

Components: The ORF clone is ion-exchange column purified and shipped in a 2D barcoded Matrix tube containing 10ug of transfection-ready, dried plasmid DNA (reconstitute with 100 ul of water).

Reconstitution Method:

1. Centrifuge at 5,000xg for 5min.
2. Carefully open the tube and add 100ul of sterile water to dissolve the DNA.
3. Close the tube and incubate for 10 minutes at room temperature.
4. Briefly vortex the tube and then do a quick spin (less than 5000xg) to concentrate the liquid at the bottom.
5. Store the suspended plasmid at -20°C. The DNA is stable for at least one year from date of shipping when stored at -20°C.

Note: Plasmids are not sterile. For experiments where strict sterility is required, filtration with 0.22um filter is required.

RefSeq: [NM_004344.3](#)

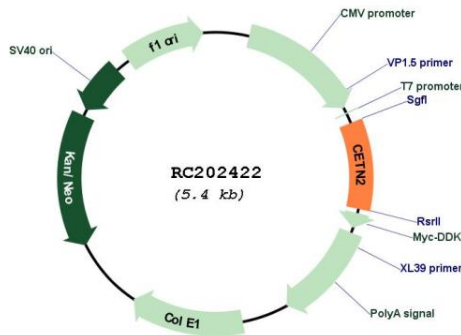
RefSeq Size: 1087 bp

RefSeq ORF: 519 bp

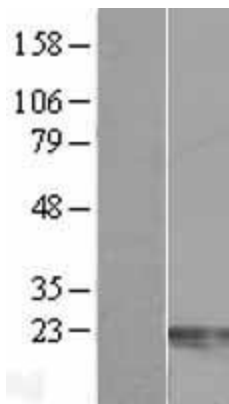
Locus ID: 1069
UniProt ID: [P41208](#)
Cytogenetics: Xq28
Domains: EFh
Protein Families: Druggable Genome
Protein Pathways: Nucleotide excision repair
MW: 19.7 kDa

Gene Summary: Caltractin belongs to a family of calcium-binding proteins and is a structural component of the centrosome. The high level of conservation from algae to humans and its association with the centrosome suggested that caltractin plays a fundamental role in the structure and function of the microtubule-organizing center, possibly required for the proper duplication and segregation of the centrosome. [provided by RefSeq, Jul 2008]

Product images:



Circular map for RC202422



Western blot validation of overexpression lysate (Cat# [LY418049]) using anti-DDK antibody (Cat# [TA50011-100]). Left: Cell lysates from untransfected HEK293T cells; Right: Cell lysates from HEK293T cells transfected with RC202422 using transfection reagent MegaTran 2.0 (Cat# [TT210002]).