

Product datasheet for RC202419

CITED1 (NM_004143) Human Tagged ORF Clone

Product data:

Product Type: Expression Plasmids
 Product Name: CITED1 (NM_004143) Human Tagged ORF Clone
 Tag: Myc-DDK
 Symbol: CITED1
 Synonyms: MSG1
 Mammalian Cell Selection: Neomycin
 Vector: pCMV6-Entry (PS100001)
 E. coli Selection: Kanamycin (25 ug/mL)
 ORF Nucleotide Sequence: >RC202419 ORF sequence
 Red=Cloning site Blue=ORF Green=Tags(s)

TTTTGTAATACGACTCACTATAGGGCGGCCGGAATTCGTCGACTGGATCCGGTACCGAGGAGATCTGCC
 GCCCGCATCGCC

ATGCCAACACGTGCGAGGCTGCACTTGTCAAGGGTGGCACCTCACCTGCGAAGGAGGATGCCAAC
 AAGAGATGAGCTCCGTGGCCTACTCCAACCTTGCAGTAAAGATCGCAAAGCAGTGGCCATTCTGCACTA
 CCCTGGGGTAGCCTCAAATGGAACCAAGGCCAGTGGGGCTCCACTAGTTCCTCGGGATCTCCAATAGGC
 TCTCTACAACCACCCCTCCACTAAACCCCATCCTTCAACCTGCACCCGCCCTCCTTGTCTGGCTA
 GTATGCAGCTGCAGAACTTAATAGCCAGTATCAGGGGATGGCTGCTGCCACTCCAGGCCAACCCGGGA
 GGCAGGACCCCTGCAAACTGGGACTTTGGGGCCAGGCCGGAGGGGCAGAACTACTCTCTCTTCTGCT
 GGTGCCAGAGCCCTGCTATCATCGATTGCGACCCAGTGGATGAGGAAGTCTGATGTCGCTGGTGGTG
 AACTGGGGTTGGACCGAGCCAATGAGCTTCGGAGCTGTGGCTGGGGCAGAAATGAGTTTGACTTCACTGC
 GGACTTTCATCTAGCTGC

ACGCGTACGCGGCCGCTCGAGCAGAACTCATCTCAGAAGAGGATCTGGCAGCAATGATATCCTGGATT
 ACAAGGATGACGACGATAAGGTTTAA

Protein Sequence: >RC202419 protein sequence
 Red=Cloning site Green=Tags(s)

MPTTSRPALDVKGGTSPAKEDANQEMSSVAYSNLAVKDRKAVAILHYPGVASNGTKASGAPTSSSGSPIG
 SPTTTPPTKPPSFLHPAPHLASMLQLKLSNSQYQGMAAATPGQPGEAGPLQNWDFGAQAGGAESLSPSA
 GAQSPAIDSDPVDEEVLMSELVLEGLDRANELPELWLGQNEFDFTADFPSSC

TRTRPLEQKLISEEDLAANDILDYKDDDDKV



Chromatograms: https://cdn.origene.com/chromatograms/mk6213_e09.zip

Restriction Sites: SgfI-MluI

Cloning Scheme:



ACCN: NM_004143

ORF Size: 579 bp

OTI Disclaimer: The molecular sequence of this clone aligns with the gene accession number as a point of reference only. However, individual transcript sequences of the same gene can differ through naturally occurring variations (e.g. polymorphisms), each with its own valid existence. This clone is substantially in agreement with the reference, but a complete review of all prevailing variants is recommended prior to use. [More info](#)

OTI Annotation: This clone was engineered to express the complete ORF with an expression tag. Expression varies depending on the nature of the gene.

Components: The ORF clone is ion-exchange column purified and shipped in a 2D barcoded Matrix tube containing 10ug of transfection-ready, dried plasmid DNA (reconstitute with 100 ul of water).

- Reconstitution Method:**
1. Centrifuge at 5,000xg for 5min.
 2. Carefully open the tube and add 100ul of sterile water to dissolve the DNA.
 3. Close the tube and incubate for 10 minutes at room temperature.
 4. Briefly vortex the tube and then do a quick spin (less than 5000xg) to concentrate the liquid at the bottom.
 5. Store the suspended plasmid at -20°C. The DNA is stable for at least one year from date of shipping when stored at -20°C.

Note: Plasmids are not sterile. For experiments where strict sterility is required, filtration with 0.22um filter is required.

RefSeq: [NM_004143.2](#), [NP_004134.1](#)

RefSeq Size: 1251 bp

RefSeq ORF: 582 bp

Locus ID: 4435

UniProt ID: [Q99966](#)

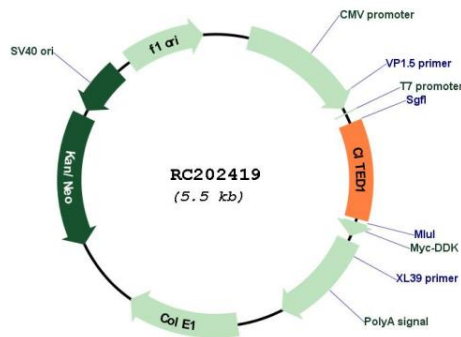
Cytogenetics: Xq13.1

Protein Families: Transcription Factors

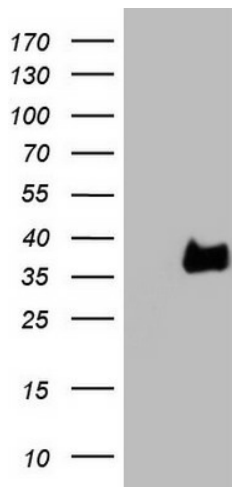
MW: 19.9 kDa

Gene Summary: This gene encodes a member of the CREB-binding protein/p300-interacting transactivator with Asp/Glu-rich C-terminal domain (CITED) family of proteins. The encoded protein, also known as melanocyte-specific gene 1, may function as a transcriptional coactivator and may play a role in pigmentation of melanocytes. Alternatively spliced transcript variants have been described. [provided by RefSeq, Jan 2009]

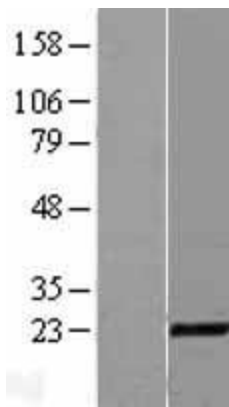
Product images:



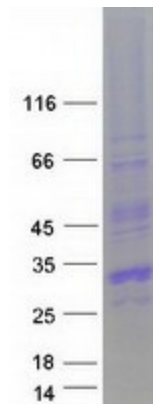
Circular map for RC202419



HEK293T cells were transfected with the pCMV6-ENTRY control (Cat# [PS100001], Left lane) or pCMV6-ENTRY CITED1 (Cat# RC202419, Right lane) cDNA for 48 hrs and lysed. Equivalent amounts of cell lysates (5 ug per lane) were separated by SDS-PAGE and immunoblotted with anti-CITED1 (Cat# [TA807075]). Positive lysates [LY418187] (100ug) and [LC418187] (20ug) can be purchased separately from OriGene.



Western blot validation of overexpression lysate (Cat# [LY428547]) using anti-DDK antibody (Cat# [TA50011-100]). Left: Cell lysates from untransfected HEK293T cells; Right: Cell lysates from HEK293T cells transfected with [RC227383] using transfection reagent MegaTran 2.0 (Cat# [TT210002]).



Coomassie blue staining of purified CITED1 protein (Cat# [TP302419]). The protein was produced from HEK293T cells transfected with CITED1 cDNA clone (Cat# RC202419) using MegaTran 2.0 (Cat# [TT210002]).