

Product datasheet for RC202417

WNT7A (NM_004625) Human Tagged ORF Clone

Product data:

Product Type:	Expression Plasmids
Product Name:	WNT7A (NM_004625) Human Tagged ORF Clone
Tag:	Myc-DDK
Symbol:	WNT7A
Synonyms:	Wnt-7a
Mammalian Cell Selection:	Neomycin
Vector:	pCMV6-Entry (PS100001)
E. coli Selection:	Kanamycin (25 ug/mL)
ORF Nucleotide Sequence:	>RC202417 representing NM_004625 Red=Cloning site Blue=ORF Green=Tags(s)

TTTTGTAATACGACTCACTATAGGGCGGCCGGAATTCGTCGACTGGATCCGGTACCGAGGAGATCTGCC
GCC**CGATCGC**C

ATGAACCGAAAGCGCGGCTGCCTGGGCCACCTCTTTCTCAGCCTGGGCATGGTCTACCTCCGGATCG
GTGGCTTCTCCTCAGTGGTAGCTCTGGGCGCAAGCATCATCTGTAACAAGATCCCAGGCCTGGCTCCAG
ACAGCGGGCGATCTGCCAGAGCCGGCCGACGCCATCATCGTCATAGGAGAAGGCTCACAATGGGCCTG
GACGAGTGTAGTTTCCGCAATGGCCGCTGGAAGTCTGCACTGGGAGAGCGCACCGTCTTCG
GGAAGGAGCTCAAAGTGGGGAGCCGGGAGGCTGCGTTCACCTACGCCATCATTGCCGCCGGCGTGGCCCA
CGCCATCACAGCTGCCTGTACCCAGGGCAACTGAGCGACTGTGGCTGCGACAAAGAGAAGCAAGGCCAG
TACCACCGGACGAGGGCTGGAAGTGGGGTGGCTGCTCTGCCGACATCCGCTACGGCATCGGCTTCGCCA
AGGTCTTTGTGGATGCCCGGGAGATCAAGCAGAATGCCCGGACTCTCATGAACTGCACAACAACGAGGC
AGGCCGAAAGATCCTGGAGGAGAATGAAGCTGGAATGTAAGTGCCACGGCGTGTGAGGCTCGTGACC
ACCAAGACGTGCTGGACCACACTGCCACAGTTTCGGGAGCTGGGCTACGTGCTCAAGGACAAGTACAACG
AGGCCGTTACGTGGAGCCTGTGCGTGCCAGCCGCAACAAGCGGCCACCTTCTGAAGTCAAGAAGCC
ACTGTCGTACCGCAAGCCATGGACACGGACCTGGTGTACATCGAGAAGTCCGCAACTACTGCGAGGAG
GACCCGTTGACCGCAGTGTGGCACCCAGGGCCGCGCTGCAACAAGACGGCTCCCGAGCCAGCGCT
GTGACCTCATGTGCTGTGGCGTGGCTACAACACCCACCATACGCCCGGTGTGGCAGTGAACACTGTAA
GTTCCACTGCTGCTATGTCAAGTGCAACACGTGCAGCGAGCGCACGGAGATGTACACGTGCAAG

ACGCGTACGCGGCCGCTCGAGCAGAACTCATCTCAGAAGAGGATCTGGCAGCAATGATATCCTGGATT
ACAAGGATGACGACGATAAGGTTTAA



[View online »](#)

Protein Sequence: >RC202417 representing NM_004625
Red=Cloning site Green=Tags(s)

MNRKARRCLGHLFLSLGMVYLRIGGFSSVVALGASIIICNKIPGLAPRQRAICQSRPDAIIVIGEGSQMGL
 DECQFQFRNGRWNCALGERTVFGKELKVGSRFAAFTYAI AAGVAHAITA AACTQGNLSDCGDKEKQGQ
 YHRDEGWKGGCSADIRYGIGFAKVFVDAREIKQNARTLMLNHNEAGRKILEENMKLECKCHGVSGSCT
 TKTCWTTLPQFRELGYVLKDKYNEAVHVEPVRASRNKRPTFLKIKKPLSYRKPMDDLVIIEKSPNYCEE
 DPVTGSGVTQGRACNKTA PQASGCDLMCCGRGYNTHQYARVWQCNCCKFWCCYVKCNTCSERTEMYTCK

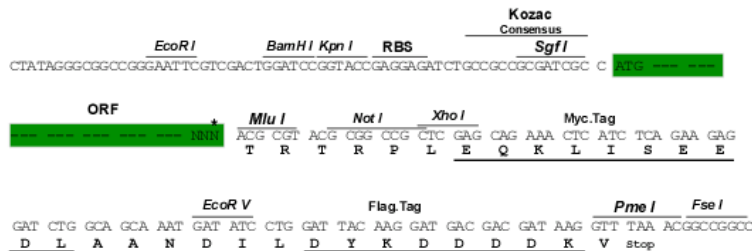
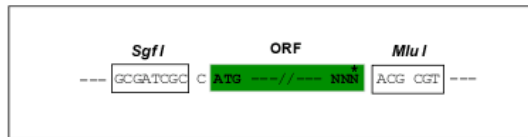
TRTRPLEQKLISEEDLAANDILDYKDDDDKV

Chromatograms: https://cdn.origene.com/chromatograms/mg2643_c01.zip

Restriction Sites: SgfI-MluI

Cloning Scheme:

Cloning sites used for ORF Shuttling:



* The last codon before the Stop codon of the ORF

ACCN: NM_004625

ORF Size: 1047 bp

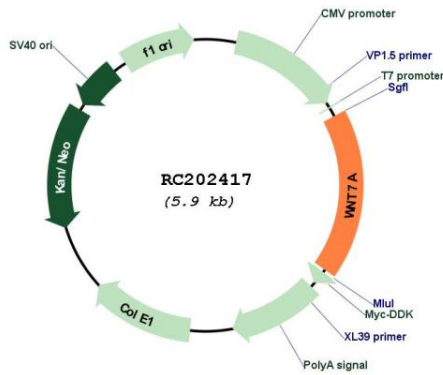
OTI Disclaimer: The molecular sequence of this clone aligns with the gene accession number as a point of reference only. However, individual transcript sequences of the same gene can differ through naturally occurring variations (e.g. polymorphisms), each with its own valid existence. This clone is substantially in agreement with the reference, but a complete review of all prevailing variants is recommended prior to use. [More info](#)

OTI Annotation: This clone was engineered to express the complete ORF with an expression tag. Expression varies depending on the nature of the gene.

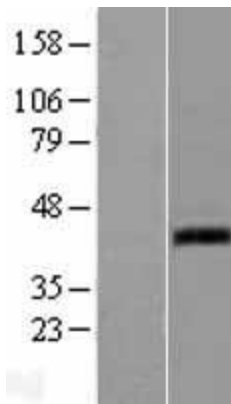
Components: The ORF clone is ion-exchange column purified and shipped in a 2D barcoded Matrix tube containing 10ug of transfection-ready, dried plasmid DNA (reconstitute with 100 ul of water).

Reconstitution Method:	<ol style="list-style-type: none">1. Centrifuge at 5,000xg for 5min.2. Carefully open the tube and add 100ul of sterile water to dissolve the DNA.3. Close the tube and incubate for 10 minutes at room temperature.4. Briefly vortex the tube and then do a quick spin (less than 5000xg) to concentrate the liquid at the bottom.5. Store the suspended plasmid at -20°C. The DNA is stable for at least one year from date of shipping when stored at -20°C.
Note:	Plasmids are not sterile. For experiments where strict sterility is required, filtration with 0.22um filter is required.
RefSeq:	NM_004625.4
RefSeq Size:	1732 bp
RefSeq ORF:	1050 bp
Locus ID:	7476
UniProt ID:	O00755
Cytogenetics:	3p25.1
Domains:	wnt
Protein Families:	Druggable Genome, Secreted Protein, Transmembrane
Protein Pathways:	Basal cell carcinoma, Hedgehog signaling pathway, Melanogenesis, Pathways in cancer, Wnt signaling pathway
MW:	39 kDa
Gene Summary:	This gene is a member of the WNT gene family, which consists of structurally related genes that encode secreted signaling proteins. These proteins have been implicated in oncogenesis and in several developmental processes, including regulation of cell fate and patterning during embryogenesis. This gene is involved in the development of the anterior-posterior axis in the female reproductive tract, and also plays a critical role in uterine smooth muscle patterning and maintenance of adult uterine function. Mutations in this gene are associated with Fuhrmann and Al-Awadi/Raas-Rothschild/Schinzel phocomelia syndromes. [provided by RefSeq, Jul 2008]

Product images:



Circular map for RC202417



Western blot validation of overexpression lysate (Cat# [LY401464]) using anti-DDK antibody (Cat# [TA50011-100]). Left: Cell lysates from untransfected HEK293T cells; Right: Cell lysates from HEK293T cells transfected with RC202417 using transfection reagent MegaTran 2.0 (Cat# [TT210002]).