

Product datasheet for **RC202415**

Emi1 (FBXO5) (NM_012177) Human Tagged ORF Clone

Product data:

Product Type:	Expression Plasmids
Product Name:	Emi1 (FBXO5) (NM_012177) Human Tagged ORF Clone
Tag:	Myc-DDK
Symbol:	Emi1
Synonyms:	EMI1; FBX5; Fbxo31
Mammalian Cell Selection:	Neomycin
Vector:	pCMV6-Entry (PS100001)
E. coli Selection:	Kanamycin (25 ug/mL)



[View online »](#)

ORF Nucleotide Sequence:

>RC202415 ORF sequence
 Red=Cloning site Blue=ORF Green=Tags(s)

TTTTGTAATACGACTCACTATAGGGCGGCCGGGAATTCGTCGACTGGATCCGGTACCGAGGAGATCTGCC
 GCC**CGCATCGCC**

ATGAGCCGGCGCCCTGCAGCTGCGCCCTACGGCCACCCCGCTGCTCCTGCAGCGCCAGCCCGAGCGCAG
 TGACAGCCGGCGGCCCTCGACCCTCGGATAGTTGTAAGAAGAAAGTTCTACCCCTTTCTGTCAAAT
 GAAGTGTGATTTAATTGTAACCATGTTTCATTCCGGACTTAAACTGGTAAAACCTGATGACATTGGAAGA
 CTAGTTTCTACACCCCTGCATATTTGGAAGGTTCTGTAAAGACTGCATTAAAGACTATGAAAGGCTGT
 CATGTATTGGGTACCGATTGTGAGCCCTAGGATTGTAGAAGCTGAAACTGAAAGCAAGCGCTTGCATAA
 CAAGGAAAATCAACATGTGCAACAGACACTTAATAGTACAATGAAATAGAAGCACTAGAGACCAGTAGA
 CTTTATGAAGACAGTGGCTATTCCTCATTTTCTACAAAGTGGCCTCAGTGAACATGAAGAAGGTAGCC
 TCCTGGAGGAGAAATTCGGTGACAGTCTACAATCTGCCTGCTACAAATACAAAGCCAGACCAATATCC
 CAACAAAACTTGTGCCAGTTCTCATTTTGAAGAAAGTGGTTTGTCAACATTAAGAAAGAAATGCAAAA
 CGAAATCCTAAAGTAGATCGGGAGATGCTGAAGGAAATATAGCCAGAGGAAATTTAGACTGCAGAATA
 TAATTGGCAGAAAAATGGCCTAGAATGTGTAGATATTCTCAGCGAACTCTTTCGAAGGGGACTCAGACA
 TGTCTTAGCAACTATTTAGCACAACTCAGTGACATGGACTTAATCAATGTGTCTAAAGTGAACAACT
 TGAAGAAGATCCTAGAAGATGATAAGGGGGCATTCCAGTTGTACAGTAAAGCAATACAAAGAGTTACCG
 AAAACAACAATAAATTTACCTCATGCTTCAACCAGAGAATATGTTATGTTCAGAACCCCACTGGCTTC
 TGTTCAGAAATCAGCAGCCAGACTTCTCTCAAAAAGATGCTCAACCAAGTTATCCAATCAAGGTGAT
 CAGAAAGGTTCTACTTATAGTCGACACAATGAATCTCTGAGGTTGCCAAGACATTGAAAAAGAACGAAA
 GCCTCAAAGCCTGTATTGCTGTAATTCACCTGCAAAAATGATTGCTATTTACAACGGCAACCTGCAA
 ACGAGAAGGCTGTGGATTTGATTATTGTACGAAGTGTCTCTGTAATTATCATACTACTAAAGACTGTTCA
 GATGGCAAGCTCCTCAAAGCCAGTTGTAATAAGTCCCCTGCCTGGTACAAAGAAAAGCAAAAAGAATT
 TACGAAGATTG

ACGCGTACGCGGCCGCTCGAGCAGAACTCATCTCAGAAGAGGATCTGGCAGCAAATGATATCCTGGATT
 ACAAGGATGACGACGATAAGGTTTAA

Protein Sequence:

>RC202415 protein sequence
 Red=Cloning site Green=Tags(s)

MSRRPCSCALRPPRSCSASPSAVTAAGRPRPSDSCKEESSTLSVKMKCDFNCNHVHSGCLKLVKPDIGR
 LVSYPAYLEGSKDCIKDYERLSCI GSPIVSPRIVELETESKRLHNKENQHVVQTLNSTNEIEALETSR
 LYEDSGYSSFLQSGLSEHEEGSLLEENFGDSLQSCLLQIQSPDQYPNKNLLPVLHFEKVVVSTLKKNAK
 RNPKVREMLKEIIARGNFRLQNIIGRKMGLECV DILSELFRRLRHVLATILAQLSDMDLINVSKVSTT
 WKKILEDKGAFLYSKAIQRVTENNNKFSPHASTREYVMFRTPLASVQKSAAQTSLLKDAQTKLSNQGD
 QKGSTYSRHNFESEVAKTLKKNESLKACIRCNSPAKYDCYLQRATCKREGCGFDYCTKCLCNYHTTKDCS
 DGKLLKASCKIGPLPGTKKSKNLRRL

TRTRPLEQKLISEEDLAANDILDYKDDDDKV

Chromatograms:

https://cdn.origene.com/chromatograms/mk6153_f02.zip

Restriction Sites:

Sgfl-Mlul

Cloning Scheme:

ACCN: NM_012177

ORF Size: 1341 bp

OTI Disclaimer: Due to the inherent nature of this plasmid, standard methods to replicate additional amounts of DNA in E. coli are highly likely to result in mutations and/or rearrangements. Therefore, OriGene does not guarantee the capability to replicate this plasmid DNA. Additional amounts of DNA can be purchased from OriGene with batch-specific, full-sequence verification at a reduced cost. Please contact our customer care team at custsupport@origene.com or by calling 301.340.3188 option 3 for pricing and delivery.

The molecular sequence of this clone aligns with the gene accession number as a point of reference only. However, individual transcript sequences of the same gene can differ through naturally occurring variations (e.g. polymorphisms), each with its own valid existence. This clone is substantially in agreement with the reference, but a complete review of all prevailing variants is recommended prior to use. [More info](#)

OTI Annotation: This clone was engineered to express the complete ORF with an expression tag. Expression varies depending on the nature of the gene.

Components: The ORF clone is ion-exchange column purified and shipped in a 2D barcoded Matrix tube containing 10ug of transfection-ready, dried plasmid DNA (reconstitute with 100 ul of water).

- Reconstitution Method:**
1. Centrifuge at 5,000xg for 5min.
 2. Carefully open the tube and add 100ul of sterile water to dissolve the DNA.
 3. Close the tube and incubate for 10 minutes at room temperature.
 4. Briefly vortex the tube and then do a quick spin (less than 5000xg) to concentrate the liquid at the bottom.
 5. Store the suspended plasmid at -20°C. The DNA is stable for at least one year from date of shipping when stored at -20°C.

RefSeq: [NM_012177.5](#)

RefSeq Size: 2109 bp

RefSeq ORF: 1344 bp

Locus ID: 26271

UniProt ID: [Q9UKT4](#)

Cytogenetics: 6q25.2

Domains: F-box

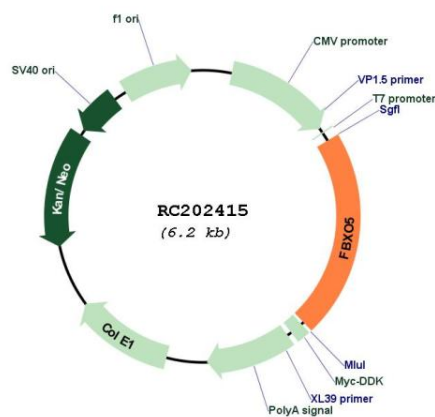
Protein Families: Druggable Genome

Protein Pathways: Oocyte meiosis

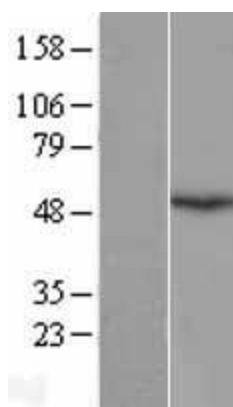
MW: 50.1 kDa

Gene Summary: This gene encodes a member of the F-box protein family which is characterized by an approximately 40 amino acid motif, the F-box. The F-box proteins constitute one of the four subunits of the ubiquitin protein ligase complex called SCFs (SKP1-cullin-F-box), which function in phosphorylation-dependent ubiquitination. The F-box proteins are divided into 3 classes: Fbws containing WD-40 domains, Fbls containing leucine-rich repeats, and Fbxs containing either different protein-protein interaction modules or no recognizable motifs. The protein encoded by this gene belongs to the Fbxs class. This protein is similar to xenopus early mitotic inhibitor-1 (Emi1), which is a mitotic regulator that interacts with Cdc20 and inhibits the anaphase promoting complex. Alternatively spliced transcript variants encoding different isoforms have been identified. [provided by RefSeq, Dec 2008]

Product images:



Circular map for RC202415



Western blot validation of overexpression lysate (Cat# [LY402160]) using anti-DDK antibody (Cat# [TA50011-100]). Left: Cell lysates from untransfected HEK293T cells; Right: Cell lysates from HEK293T cells transfected with RC202415 using transfection reagent MegaTran 2.0 (Cat# [TT210002]).