

## Product datasheet for **RC202408**

### TRAP alpha (SSR1) (NM\_003144) Human Tagged ORF Clone

#### Product data:

Product Type:	Expression Plasmids
Product Name:	TRAP alpha (SSR1) (NM_003144) Human Tagged ORF Clone
Tag:	Myc-DDK
Symbol:	TRAP alpha
Synonyms:	TRAPA
Mammalian Cell Selection:	Neomycin
Vector:	pCMV6-Entry (PS100001)
E. coli Selection:	Kanamycin (25 ug/mL)
ORF Nucleotide Sequence:	>RC202408 ORF sequence Red=Cloning site Blue=ORF Green=Tags(s)

TTTTGTAATACGACTCACTATAGGGCGCCGGGAATTCGTCGACTGGATCCGGTACCGAGGAGATCTGCC  
GCC**CGATCGCC**

ATGAGACTCCTCCCCGCTTGCTGCTGCTTCTCTTACTCGTGTTCCCTGCCACTGTCTTGTCCGAGGCG  
GCCCCAGAGGCTTGTTAGCAGTGGCACAAGATCTTACAGAGGATGAAGAAACAGTAGAAGATTCATAAT  
TGAGGATGAAGATGATGAAGCCGAGGTAGAAGAAGATGAACCCACAGATTTGGTAGAAGATAAAGAGGAA  
GAAGATGTGTCTGGTGAACCTGAAGCTTACCGAGTGCAGATACAACATACTGTTTGTAAAAGGAGAAG  
ATTTCCAGCAAATAACATTGTGAAGTTCCTGGTAGGCTTTACCAACAAGGTACAGAAGATTTTATTGT  
TGAATCCTTAGATGCCTCATTCCGTTATCCTCAGGACTACCAGTTTTATCCAGAATTTACAGCTCTT  
CCTCTGAACACTGTAGTGCCACCCAGAGACAGGCAACTTTTGAGTACTCTTTCATTCTGCAGAGCCCA  
TGGGCGGACGACCATTTGGTTTGGTCAATCTGAACTACAAAGATTTGAACGGCAATGTATTCCAAGA  
TGCAGTCTTCAATCAAACAGTTACAGTTATTGAAAGAGAGGATGGGTTAGATGGAGAAACAATCTTTATG  
TATATGTTCTTGCTGGTCTTGGGCTTCTGGTTATTGTTGGCCTTCACTCAACTCTAGAATCTAGAAAGC  
GTAAGAGACCCATACAGAAAGTAGAAATGGGTACATCAAGTCAGAATGATGTTGACATGAGTTGGATTCC  
TCAGGAAACATTGAATCAAATCAATAAAGCTTACCAAGAAGGTTGCCAGGAAACGGGCACAGAAGAGA  
TCAGTGGGATCTGATGAG

**ACGCGT**ACGCGGCCGCTCGAGCAGAAACTCATCTCAGAAGAGGATCTGGCAGCAAATGATATCCTGGATT  
ACAAGGATGACGACGATAAGGTTTAA



[View online »](#)

**Protein Sequence:** >RC202408 protein sequence  
Red=Cloning site Green=Tags(s)

MRLLPRLLLLLLVFPATVLFRRGPRGLLAVAQDLTEDEETVEDSIIIEDEDEAEVEEPTDLVEDKEE  
 EDVSGEPEASPSADTTILFVKGEDFPANNIVKFLVGFVTKGTEDFIVESLDASFRYPQDYQFYIQNFTAL  
 PLNTVVPPQRQATFEYSFIPAEPMGGRPFGLVINLNYKDLNGNVFQDAVFNQTVTVIEREDGLDGETIFM  
 YMFLAGLGLLVIVGLHQLLESRRKRKRIQKVEMGTSQQNDVMSWIPQETLNQINKASPRRLPRKRAQKR  
 SVGSDE

TRTRPLEQKLISEEDLAANDILDYKDDDDKV

**Chromatograms:** [https://cdn.origene.com/chromatograms/mk6076\\_a12.zip](https://cdn.origene.com/chromatograms/mk6076_a12.zip)

**Restriction Sites:** SgfI-MluI

**Cloning Scheme:**



**ACCN:** NM\_003144

**ORF Size:** 858 bp

**OTI Disclaimer:** The molecular sequence of this clone aligns with the gene accession number as a point of reference only. However, individual transcript sequences of the same gene can differ through naturally occurring variations (e.g. polymorphisms), each with its own valid existence. This clone is substantially in agreement with the reference, but a complete review of all prevailing variants is recommended prior to use. [More info](#)

**OTI Annotation:** This clone was engineered to express the complete ORF with an expression tag. Expression varies depending on the nature of the gene.

**Components:** The ORF clone is ion-exchange column purified and shipped in a 2D barcoded Matrix tube containing 10ug of transfection-ready, dried plasmid DNA (reconstitute with 100 ul of water).

**Reconstitution Method:**

1. Centrifuge at 5,000xg for 5min.
2. Carefully open the tube and add 100ul of sterile water to dissolve the DNA.
3. Close the tube and incubate for 10 minutes at room temperature.
4. Briefly vortex the tube and then do a quick spin (less than 5000xg) to concentrate the liquid at the bottom.
5. Store the suspended plasmid at -20°C. The DNA is stable for at least one year from date of shipping when stored at -20°C.

**RefSeq:** [NM\\_003144.5](#)

**RefSeq Size:** 9793 bp

**RefSeq ORF:** 861 bp

**Locus ID:** 6745

**UniProt ID:** [P43307](#)

**Cytogenetics:** 6p24.3

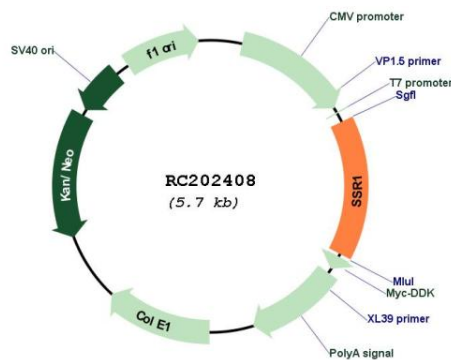
**Domains:** TRAP\_alpha

**Protein Families:** Druggable Genome, Transmembrane

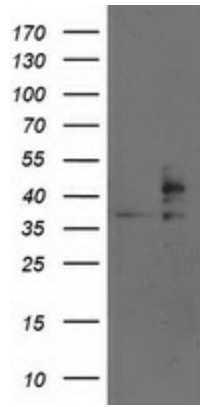
**MW:** 32.2 kDa

**Gene Summary:** The signal sequence receptor (SSR) is a glycosylated endoplasmic reticulum (ER) membrane receptor associated with protein translocation across the ER membrane. The SSR consists of 2 subunits, a 34-kD glycoprotein encoded by this gene and a 22-kD glycoprotein. This gene generates several mRNA species as a result of complex alternative polyadenylation. This gene is unusual in that it utilizes arrays of polyA signal sequences that are mostly non-canonical. Multiple transcript variants encoding different isoforms have been found for this gene. [provided by RefSeq, May 2014]

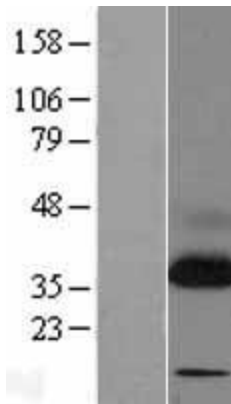
### Product images:



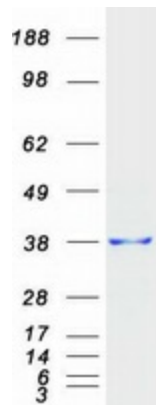
Circular map for RC202408



HEK293T cells were transfected with the pCMV6-ENTRY control (Cat# [PS100001], Left lane) or pCMV6-ENTRY SSR1 (Cat# RC202408, Right lane) cDNA for 48 hrs and lysed. Equivalent amounts of cell lysates (5 ug per lane) were separated by SDS-PAGE and immunoblotted with anti-SSR1 (Cat# [TA503268]). Positive lysates [LY401093] (100ug) and [LC401093] (20ug) can be purchased separately from OriGene.



Western blot validation of overexpression lysate (Cat# [LY401093]) using anti-DDK antibody (Cat# [TA50011-100]). Left: Cell lysates from untransfected HEK293T cells; Right: Cell lysates from HEK293T cells transfected with RC202408 using transfection reagent MegaTran 2.0 (Cat# [TT210002]).



Coomassie blue staining of purified SSR1 protein (Cat# [TP302408]). The protein was produced from HEK293T cells transfected with SSR1 cDNA clone (Cat# RC202408) using MegaTran 2.0 (Cat# [TT210002]).