

## Product datasheet for **RC202402**

### UBIAD1 (NM\_013319) Human Tagged ORF Clone

#### Product data:

Product Type:	Expression Plasmids
Product Name:	UBIAD1 (NM_013319) Human Tagged ORF Clone
Tag:	Myc-DDK
Symbol:	UBIAD1
Synonyms:	SCCD; TERE1
Mammalian Cell Selection:	Neomycin
Vector:	pCMV6-Entry (PS100001)
E. coli Selection:	Kanamycin (25 ug/mL)
ORF Nucleotide Sequence:	>RC202402 ORF sequence Red=Cloning site Blue=ORF Green=Tags(s)

TTTTGTAATACGACTCACTATAGGGCGGCCGGAATTCGTCGACTGGATCCGGTACCGAGGAGATCTGCC  
GCC**CGATCGCC**

ATGGCGGCTCTCAGGTCTGGGGGAGAAGATTAACATCCTGTCGGGAGAGACTGTCAAAGCTGGGGACA  
GGGACCCGCTGGGAACGACTGTCCGAGCAAGATAGGCTCCCCAGCGCTCCTGGAGGCAGAAGTGTGC  
CTCCTACGTGTTGGCCCTGAGGCCCTGGAGCTCAGTGCCTCACTCACACCGGTGGCCCTGGGCAGTGCC  
CTTGCCTACAGATCCCACGGTGTCTGGATCCCAGGCTTTGGTGGTGTGCCGTGGCTGTCTGGCTG  
TGCACGGGGCCGTAATTTGGTCAACACTTACTATGACTTTTCCAAGGGCATTGACCACAAAAGAGTGA  
TGACAGGACACTTGTGGACCGAATCTTGGAGCCGAGGATGTCGTCCGGTTCGGAGTCTTCTCTACACG  
TTGGGCTGCGTCTGTGCCGCTTGCTCTACTACCTGTCCCTCTGAAACTGGAGCACTTGGCTCTTATCT  
ACTTTGGAGGCCCTGTCTGGCTCCTTTCTCTACACAGGAGGAATTGGATTCAAGTACGTGGCTCTGGGAGA  
CCTCATCATCCTCATCACTTTTGGCCCGCTGGCTGTGATGTTGCGCTACGCCATCCAGGTGGGGTCCCTG  
GCCATCTTCCCACTGGTCTATGCCATCCCCCTCGCCCTCAGCACCAGGCCATTCTCATTCCAACAACA  
CCAGGGACATGGAGTCCGACCGGGAGGCTGGTATCGTCACGCTGGCCATCCTCATCGGCCACACTGCACC  
CTACATTCTACAACACTGCTTCTTCCCTGCCCTACCTGGTCTTCAGCATCCTGGCCACACTGCACC  
ATCAGCCTGGCACTCCCCCTGCTTACCATTCCCATGGCCTTCTCCCTTGGAGACAGTTTGAAGCCAGG  
CCTTCAACAAACTGCCCCAGAGGACTGCCAAGCTCAACCTCCTGCTGGGACTTTTCTATGCTTTTGGCAT  
CATTCTGGCACCAGCAGGCACTGCCCCAAATT

**ACGCGT**ACGCGGCCGCTCGAGCAGAAACTCATCTCAGAAGAGGATCTGGCAGCAATGATATCCTGGATT  
ACAAGGATGACGACGATAAGGTTTAA



[View online »](#)

**Protein Sequence:** >RC202402 protein sequence  
Red=Cloning site Green=Tags(s)

MAASQVLGEKINILSGETVKAGDRDPLGNDCEQDRLPQRSWRQKCASEYVLRPWSFSASLTPVALGSA  
 LAYRSHGVLDPRLLVGCAVAVLAVHGAGNLVNTYYDFSKGIDHKKSDRDLVDRILEPQDVVRFVGFVLYT  
 LGCVCAACLYYLSPLEHLALIFYGGLSGSFLYGGIGFKYVALGDLIILITFGPLAVMFAYAIQVGS  
 AIFPLVYAIPLALSTEAILHSNNTRDMESDREAGIVTLAILIGPTFSYILYNTLLFLPYLVFSILATHCT  
 ISLALPLLTIPTMAFSLERQFRSQAFNKLPORTAKLNLLGLFYVFGIILAPAGSLPKI

TRTRPLEQKLISEEDLAANDILDYKDDDDKV

**Chromatograms:** [https://cdn.origene.com/chromatograms/mk6085\\_e02.zip](https://cdn.origene.com/chromatograms/mk6085_e02.zip)

**Restriction Sites:** SgfI-MluI

**Cloning Scheme:**

Cloning sites used for ORF Shuttling:



**ACCN:** NM\_013319

**ORF Size:** 1014 bp

**OTI Disclaimer:** The molecular sequence of this clone aligns with the gene accession number as a point of reference only. However, individual transcript sequences of the same gene can differ through naturally occurring variations (e.g. polymorphisms), each with its own valid existence. This clone is substantially in agreement with the reference, but a complete review of all prevailing variants is recommended prior to use. [More info](#)

**OTI Annotation:** This clone was engineered to express the complete ORF with an expression tag. Expression varies depending on the nature of the gene.

**Components:** The ORF clone is ion-exchange column purified and shipped in a 2D barcoded Matrix tube containing 10ug of transfection-ready, dried plasmid DNA (reconstitute with 100 ul of water).

**Reconstitution Method:**

1. Centrifuge at 5,000xg for 5min.
2. Carefully open the tube and add 100ul of sterile water to dissolve the DNA.
3. Close the tube and incubate for 10 minutes at room temperature.
4. Briefly vortex the tube and then do a quick spin (less than 5000xg) to concentrate the liquid at the bottom.
5. Store the suspended plasmid at -20°C. The DNA is stable for at least one year from date of shipping when stored at -20°C.

**RefSeq:** [NM\\_013319.3](#)

**RefSeq Size:** 3687 bp

**RefSeq ORF:** 1017 bp

**Locus ID:** 29914

**UniProt ID:** [Q9Y5Z9](#)

**Cytogenetics:** 1p36.22

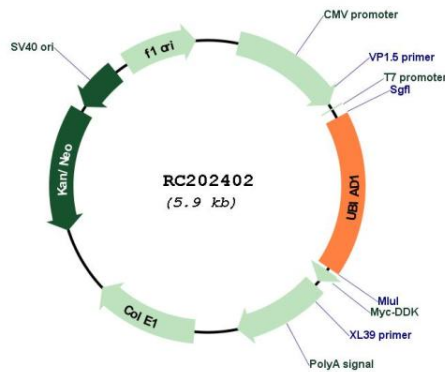
**Domains:** UbiA

**Protein Families:** Transmembrane

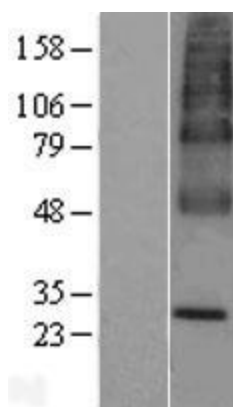
**MW:** 36.8 kDa

**Gene Summary:** This gene encodes a protein thought to be involved in cholesterol and phospholipid metabolism. Mutations in this gene are associated with Schnyder crystalline corneal dystrophy. [provided by RefSeq, Oct 2008]

### Product images:



Circular map for RC202402



Western blot validation of overexpression lysate (Cat# [LY415671]) using anti-DDK antibody (Cat# [TA50011-100]). Left: Cell lysates from untransfected HEK293T cells; Right: Cell lysates from HEK293T cells transfected with RC202402 using transfection reagent MegaTran 2.0 (Cat# [TT210002]).