

Product datasheet for **RC202399**

SSH3 (NM_017857) Human Tagged ORF Clone

Product data:

Product Type:	Expression Plasmids
Product Name:	SSH3 (NM_017857) Human Tagged ORF Clone
Tag:	Myc-DDK
Symbol:	SSH3
Synonyms:	SSH3L
Mammalian Cell Selection:	Neomycin
Vector:	pCMV6-Entry (PS100001)
E. coli Selection:	Kanamycin (25 ug/mL)



[View online »](#)

**ORF Nucleotide
Sequence:**

>RC202399 ORF sequence
 Red=Cloning site Blue=ORF Green=Tags(s)

TTTTGTAATACGACTCACTATAGGGCGGCCGGGAATTCGTCGACTGGATCCGGTACCGAGGAGATCTGCC
 GCC**CGGATCGCC**

ATGGCCCTGGTCACAGTGAAGCCGTTCCGCCCGGGCAGCGGCCCTCCACGCCCGTGGGCGCTGGGACC
 AGGCGGTCAGCGAAGGAGTCACTCCAGCGAAGGCAGAGCTTTGCGGTGCTCCGTGGGGCTGTCTGGG
 ACTGCAGGATGGAGGGACAATGATGATGCAGCAGAGGCCAGTTCTGAGCCAACAGAGAAGGCCCGAGT
 GAGGAGGAGTCCACGGGACCAGACAGACTTCGGGCAAGGATCCAGAGTCCCCAGAAGCAGGAGGAGC
 AGAGGCAGCACCTGCACCTCATGGTACAGCTGCTGAGGCCGAGGATGACATCCGCTGGCAGCCAGCT
 GGAGGCACCCCGGCTCCCGGCTCCGCTACCTGCTGGTAGTTTCTACACGAGAAGGAGAAGGTCTGAGC
 CAGGATGAGACGGTCTCTGGGCGTGGATTTCCCTGACAGCAGCTCCCCAGCTGCACCCTGGGCTGG
 TCTTGCCCTCTGGAGTACACCCAGGTACTTAGATGGAGACGGGGCTTCAGCGTGACGTCTGGTGG
 GCAAAGCCGGATCTTCAAGCCCATCTCCATCCAGACCATGTGGGCCACACTCCAGGTATTGCACCAAGCA
 TGTGAGGCAGCTTAGGCAGCGGCTTGTACCGGGTGGCAGTGCCTCACCTGGGCCAGCCACTACCAGG
 AGAGACTGAACCTCCGAACAGAGCTGCCTCAATGAGTGGACGGCTATGGCCGACCTGGAGTCTCTGCGCC
 TCCCAGCGCCGAGCCTGGCGGTCTCAGAACAGGAGCAGATGGAGCAGGCGATCCGTGCTGAGCTGTGG
 AAAGTGTGGATGTCAGTGACCTGGAGAGTGTCACTTCCAAGAGATCCGCCAGGCTCTGGAGCTGCGCC
 TGGGGCTCCCCCTCCAGCAGTACCGTGACTTATCGACAACCAGATGCTGCTGCTGGTGGCACAGCGGGA
 CCGAGCCTCCCGCATCTTCCCCACCTCACTGGGCTCAGAGTGAACGCAGCAAACCTGGAGGAGCTG
 CAGAGGAACAGGGTCACCCACATCTTGAACATGGCCCGGAGATTGACAACTTCTACCCTGAGCGCTTCA
 CCTACCACAATGTGCGCTCTGGGATGAGGAGTCGGCCAGCTGCTGCCGCACTGGAAGGAGACGCACCG
 CTTCAATTGAGGCTGCAAGAGCACAGGGCACCCAGGTGCTGGTCCACTGCAAGATGGGCGTCAGCCGCTCA
 GCGGCCACAGTGTGGCCTATGCCATGAAGCAGTACGAATGCAGCCTGGAGCAGGCCCTGCGCCACGTGC
 AGGAGCTCCGGCCATCGCCCGCCCAACCCTGGCTTCTGCGCCAGCTGCAGATCTACCAGGGCATCCT
 GACGGCCAGCCGCGCAGAGCCATGTCTGGGAGCAGAAAGTGGTGGGGTCTCCCCAGAGGAGCAGCCAGCC
 CCTGAAGTCTCTACACCTTCCACCTTCCGCCAGAACCTGAGGGTGGTGGGAGGAGAAGGTTGTAG
 GCATGGAAGAGAGCCAGGACGCCCCGAAAGAAGAGCCTGGGCCACGGCCACGTATAAACCTCCGAGGGGT
 CATGAGGTCCATCAGTCTTCTGGAGCCCTCTTGGAGCTGGAGAGCACCTCAGAGACCAGTGACATGCCA
 GAGGTCTTCTTCCCACGAGTCTTACATGAAGAGCCTCTGCAGCCCTCCCACAGCTTGAAGGACCA
 AGGGAGGCCAGCAGGTGGACAGGGGGCCTCAGCCTGCCCTGAAGTCCCGCAGTCAGTGGTTACCTCCA
 GGGCAGTGCCGTGGTGGCCAACCGGACCCAGGCCCTCCAGGAGCAGGAGCAGGGGCAGGGGCAGGGGCAG
 GGAGAGCCCTGCATTTCTCTACGCCAGGTTCCGGAAGGTGGTGGAGACAGGCCAGCGTGCATGACAGTG
 GAGAGGAGGGCGAGGCC

ACGCGTACGCGGGCCGCTCGAGCAGAACTCATCTCAGAAGAGGATCTGGCAGCAAATGATATCCTGGATT
 ACAAGGATGACGACGATAAGGTTTAA

Reconstitution Method:

1. Centrifuge at 5,000xg for 5min.
2. Carefully open the tube and add 100ul of sterile water to dissolve the DNA.
3. Close the tube and incubate for 10 minutes at room temperature.
4. Briefly vortex the tube and then do a quick spin (less than 5000xg) to concentrate the liquid at the bottom.
5. Store the suspended plasmid at -20°C. The DNA is stable for at least one year from date of shipping when stored at -20°C.

RefSeq: [NM_017857.4](#)

RefSeq Size: 2894 bp

RefSeq ORF: 1980 bp

Locus ID: 54961

UniProt ID: [Q8TE77](#)

Cytogenetics: 11q13.2

Domains: DSPc

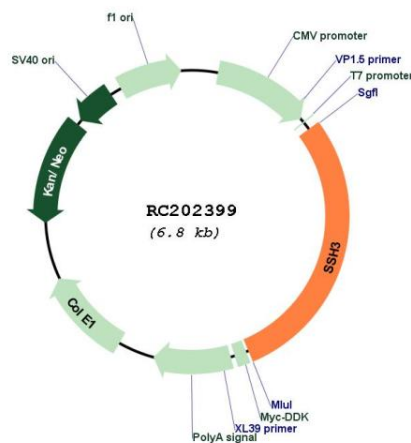
Protein Families: Druggable Genome, Phosphatase

Protein Pathways: Regulation of actin cytoskeleton

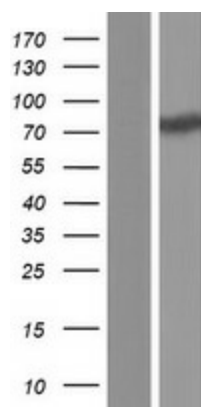
MW: 73 kDa

Gene Summary: The ADF (actin-depolymerizing factor)/cofilin family (see MIM 601442) is composed of stimulus-responsive mediators of actin dynamics. ADF/cofilin proteins are inactivated by kinases such as LIM domain kinase-1 (LIMK1; MIM 601329). The SSH family appears to play a role in actin dynamics by reactivating ADF/cofilin proteins in vivo (Niwa et al., 2002 [PubMed 11832213]).[supplied by OMIM, Mar 2008]

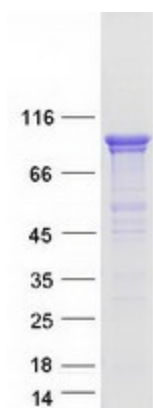
Product images:



Circular map for RC202399



Western blot validation of overexpression lysate (Cat# [LY413421]) using anti-DDK antibody (Cat# [TA50011-100]). Left: Cell lysates from untransfected HEK293T cells; Right: Cell lysates from HEK293T cells transfected with RC202399 using transfection reagent MegaTran 2.0 (Cat# [TT210002]).



Coomassie blue staining of purified SSH3 protein (Cat# [TP302399]). The protein was produced from HEK293T cells transfected with SSH3 cDNA clone (Cat# RC202399) using MegaTran 2.0 (Cat# [TT210002]).