

Product datasheet for **RC202398**

GOLPH3L (NM_018178) Human Tagged ORF Clone

Product data:

| | |
|---------------------------|---|
| Product Type: | Expression Plasmids |
| Product Name: | GOLPH3L (NM_018178) Human Tagged ORF Clone |
| Tag: | Myc-DDK |
| Symbol: | GOLPH3L |
| Synonyms: | GPP34R |
| Mammalian Cell Selection: | Neomycin |
| Vector: | pCMV6-Entry (PS100001) |
| E. coli Selection: | Kanamycin (25 ug/mL) |
| ORF Nucleotide Sequence: | >RC202398 ORF sequence Red=Cloning site Blue=ORF Green=Tags(s) |

TTTTGTAATACGACTCACTATAGGGCGCCGGGAATTCGTCGACTGGATCCGGTACCGAGGAGATCTGCC
GCC**CGGATCGCC**

ATGACCACTTTAACTCACCGGGCCCGTCGCACTGAAATAAGCAAGAACTCTGAAAAGAAGATGGAAAGTG
AGGAAGACAGTAATTGGGAGAAAAGTCCAGACAATGAAGATTCTGGAGACTCTAAGGATATCCGCCTTAC
TCTTATGGAAGAAGTATTGCTTCTGGGACTAAAAGATAAAGAGGGGTACACATCTTTCTGGAATGACTGC
ATATCATCAGGCCTGCGAGGGGGCATCCTGATAGAGCTGGCCATCGGGGTGCAATCTATCTGGAACCC
CGACCATGCGTAAGAAGCGACTACTAGACAGAAAGGTAAGTCTAAAGTCAGACAGCCCAACAGGTGATGT
TTTACTGGATGAAACTCTGAAACACATCAAAGCAACTGAACCCACAGAACTGTCCAACATGGATAGAG
CTACTCACTGGTGAACCTGGAACCCCTTCAAATTACAGTACCAGCTGAGAAATGTACGAGAGCGCATCG
CAAAGAACCTAGTAGAGAAAGGTATTCTAACCCTGAGAAGCAGAATTTCTGCTATTTGACATGACTAC
TCATCCAGTGACCAATACAACAGAGAAAACAGCGACTAGTAAAAAACTTCAAGATAGTGTACTAGAGCGG
TGGGTAATGACCCTCAGCGTATGGACAAGCGAACTAGCACTCCTGGTGTAGCCCACTCCTCTGATG
TGCTAGAGAATGTCTTCTCTCTGACAGATGACAAGTATGATGTGGCAATGAATCGAGCCAAGGACTT
AGTAGAACTGGACCCTGAAGTGGAAAGGGACAAAGCCTAGTGCCACAGAAATGATCTGGCTGTGCTGGCA
GCCTTCAATAAATCT

ACGCGTACGCGGGCCGCTCGAGCAGAAACTCATCTCAGAAGAGGATCTGGCAGCAAATGATATCCTGGATT
ACAAGGATGACGACGATAAGGTTAA



[View online »](#)

Protein Sequence: >RC202398 protein sequence
Red=Cloning site Green=Tags(s)

MTTLTHRARRTEISKNSEKKMESEEDSNWEKSPDNEDSGDSKDIRLTLMEEVLLLGLKDKEGYTSFWND
 ISSGLRGGILIELAMRGRILEPPTMRKRLDRKVLKSDSPTGDVLLDETLKHIKATEPTETVQTWIE
 LLTGETWNPFLQYQLRNVREIRIAKNLVEKGILTTEKQNFLLFDMTTHPVTNTTEKQRLVKKLQDSVLER
 WYNDPQRMDKRTLALLVLAHSSDVLNVFSSLTDDKYDVAMNRAKDLVELDPEVEGTKPSATEMIWAVLA
 AFNKS

TRTRPLEQKLISEEDLAANDILDYKDDDDKV

Chromatograms: https://cdn.origene.com/chromatograms/mk6436_d07.zip

Restriction Sites: SgfI-MluI

Cloning Scheme:



ACCN: NM_018178

ORF Size: 855 bp

OTI Disclaimer: The molecular sequence of this clone aligns with the gene accession number as a point of reference only. However, individual transcript sequences of the same gene can differ through naturally occurring variations (e.g. polymorphisms), each with its own valid existence. This clone is substantially in agreement with the reference, but a complete review of all prevailing variants is recommended prior to use. [More info](#)

OTI Annotation: This clone was engineered to express the complete ORF with an expression tag. Expression varies depending on the nature of the gene.

Components: The ORF clone is ion-exchange column purified and shipped in a 2D barcoded Matrix tube containing 10ug of transfection-ready, dried plasmid DNA (reconstitute with 100 ul of water).

Reconstitution Method:

1. Centrifuge at 5,000xg for 5min.
2. Carefully open the tube and add 100ul of sterile water to dissolve the DNA.
3. Close the tube and incubate for 10 minutes at room temperature.
4. Briefly vortex the tube and then do a quick spin (less than 5000xg) to concentrate the liquid at the bottom.
5. Store the suspended plasmid at -20°C. The DNA is stable for at least one year from date of shipping when stored at -20°C.

RefSeq: [NM_018178.6](#)

RefSeq Size: 3208 bp

RefSeq ORF: 858 bp

Locus ID: 55204

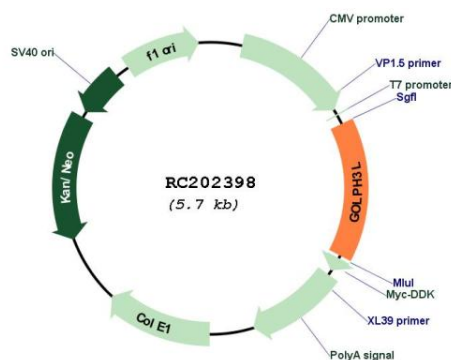
UniProt ID: [Q9H4A5](#)

Cytogenetics: 1q21.3

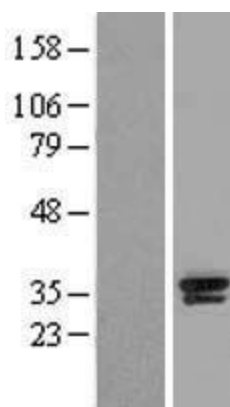
MW: 32.8 kDa

Gene Summary: The Golgi complex plays a key role in the sorting and modification of proteins exported from the endoplasmic reticulum. The protein encoded by this gene is localized at the Golgi stack and may have a regulatory role in Golgi trafficking. [provided by RefSeq, Jul 2008]

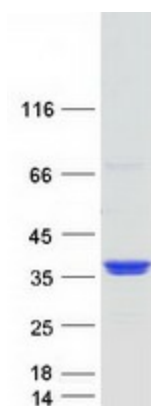
Product images:



Circular map for RC202398



Western blot validation of overexpression lysate (Cat# [LY413097]) using anti-DDK antibody (Cat# [TA50011-100]). Left: Cell lysates from untransfected HEK293T cells; Right: Cell lysates from HEK293T cells transfected with RC202398 using transfection reagent MegaTran 2.0 (Cat# [TT210002]).



Coomassie blue staining of purified GOLPH3L protein (Cat# [TP302398]). The protein was produced from HEK293T cells transfected with GOLPH3L cDNA clone (Cat# RC202398) using MegaTran 2.0 (Cat# [TT210002]).