

Product datasheet for **RC202390**

IL17RA (NM_014339) Human Tagged ORF Clone

Product data:

Product Type:	Expression Plasmids
Product Name:	IL17RA (NM_014339) Human Tagged ORF Clone
Tag:	Myc-DDK
Symbol:	IL17RA
Synonyms:	CANDF5; CD217; CDw217; hIL-17R; IL-17RA; IL17R; IMD51
Mammalian Cell Selection:	Neomycin
Vector:	pCMV6-Entry (PS100001)
E. coli Selection:	Kanamycin (25 ug/mL)



[View online »](#)

ORF Nucleotide Sequence:

>RC202390 representing NM_014339
 Red=Cloning site Blue=ORF Green=Tags(s)

TTTTGTAATACGACTCACTATAGGGCGGCCGGAATTCGTCGACTGGATCCGGTACCGAGGAGATCTGCC
 GCC**CGGATCGCC**

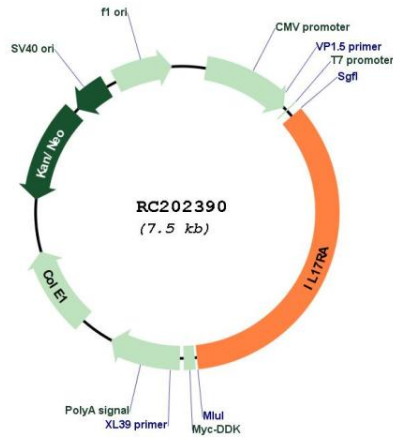
ATGGGGGCGGCACGCAGCCCGCTCCGCTGTCCCGGGCCCTGCTGGGGCTGCTCCTGCTGCTCCTGG
 GGTGCTGGCCCCGGGTGGCGCCTCCCTGCGACTCCTGGACCACCGGGCGCTGGTCTGCTCCAGCCGGG
 GCTAAACTGCACGGTCAAGAATAGTACCTGCTGGATGACAGCTGGATTACCCCTCGAAACCTGACCCCC
 TCCTCCCCAAAGGACCTGCAGATCCAGCTGCACTTTGCCACACCCAACAAGGAGACCTGTTCCCGTGG
 CTCACATCGAATGGACTGCAGACAGACGCCAGCATCCTGTACCTCGAGGGTGCAGAGTTATCTGTCT
 GCAGCTGAACACCAATGAACGTTTGTGCGTCAGGTTTGTAGTTTCTGTCCAACTGAGGCATACCACAGG
 CGGTGGCGTTTTACCTTCAGCCACTTTGTGGTTGACCCTGACCAGGAATATGAGGTGACCGTTACCACC
 TGCCCAAGCCCATCCCTGATGGGACCCAAACCACAGTCCAAGAATTCCTTGTGCTGACTGTGAGCA
 CGCCAGGATGAAGTAACCACGCCATGCATGAGCTCAGGCAGCCTGTGGGACCCCAACATACCCTGGAG
 ACCCTGGAGGCCACCAGCTGCGTGTGAGCTTACCCTGTGGAACGAATCTACCCATTACCAGATCCTGC
 TGACCAGTTTTCCGCACATGGAGAACCACAGTTGCTTTGAGCACATGCACCACATACCTGCGCCAGACC
 AGAAGAGTTCCACCAGCGATCCAACGTCACACTCACTCTACGCAACCTTAAAGGGTGTGTGCGCCACCA
 GTGCAGATCCAGCCCTTCTTCAGCAGCTGCCTCAATGACTGCCTCAGACACTCCGCGACTGTTTCTGCC
 CAGAAATGCCAGACACTCCAGAACCAATTCGGACTACATGCCCTGTGGGTGTACTGGTTCATCACGGG
 CATCTCCATCCTGCTGGTGGGCTCCGTCATCCTGCTCATCGTCTGCATGACCTGGAGGCTAGCTGGGCT
 GGAAGTGAAAAATACAGTGATGACACCAATACACCGATGGCCTGCCTGTGGCTGACCTGATCCCCCAC
 CGCTGAAGCCCAGGAAGTCTGGATCATCTACTCAGCCGACCCCTCTACGTGGAGTGGTGTGTTGAA
 ATTCGCCAGTTCTGCTCACCGCTGCGGCACGGAAGTGGCCCTGGACCTGCTGGAAGAGCAGGCCATC
 TCGGAGGCAGGAGTCATGACCTGGTGGCCGTCAGAAGCAGGAGATGGTGGAGGCAACTTAAGATCA
 TCGTCTGTGCTCCCGCGCACGCGCAGCAAGTGGCAGGCCTCCTGGGCGGGGGCGCCTGTGCGGCT
 GCGCTGCGACCAGGAAAGCCCGTGGGGGACTGTTCACTGCAGCCATGAACATGATCCTCCCGACTTC
 AAGAGGCCAGCCTGCTTCGGCACCTACGTAGTCTGCTACTTCAGCGAGGTGAGCTGTGACGGCGAGCTC
 CCGACTGTTCCGGCGGGCGCCGCTACCCGCTCATGGACAGGTTGAGGAGGTGACTTCCGCATCCA
 GGACTGGAGATGTTCCAGCCGGCCGCATGCACCGCTAGGGGAGCTGTGCGGGGACAACCTACCTGCGG
 AGCCCGGGCGGCAGGCAGCTCCGCGCCGCTGGACAGGTTCCGGGACTGGCAGGTTCCACTGTCGGACT
 GGTTCGAATGTGAGAACCTCTACTCAGCAGATGACCAGGATGCCCGTCCCTGGACGAAGAGGTGTTTGA
 GGAGCCACTGCTGCCTCCGGGAACCGGCATCGTGAAGCGGGCGCCCTGGTGCAGGAGCCTGGCTCCAG
 GCCTGCCTGGCCATAGACCCGCTGGTCCGGGAGGAAGGAGGAGCAGCAGTGGCAAAGCTGGAACCTCACC
 TGCAGCCCCGGGGTCAAGCAGCGCCGACGCCCTCCACACCTGGTGTGCTCGCCGAGAGGAGGGGCCCT
 GGTGGCCGCGGTGGAGCCTGGGCCCTGGCTGACGGTCCCGCAGTCCGGCTGGCACTGGCGGGGAGGGC
 GAGGCTGCCCGCTGCTGGCAGCCCGGGCGTGGGCGAAATAGCGTCTCTTCTCCCTGTGGACCCCG
 AGGACTCGCCCTTGGCAGCAGCACCCCATGGCGTCTCCTGACCTCCTTCCAGAGGACGTGAGGGAGCA
 CCTCGAAGGCTTGATGCTCTCGCTCTTCGAGCAGAGTCTGAGCTGCCAGGCCAGGGGGGCTGCAGTAGA
 CCGCCATGGTCTCACAGACCACACAGCCCTACGAGGAGGAGCAGCGCAGTCAAGTCAAGTCTGACC
 AGGGCTACATCTCCAGGAGCTCCCGCAGCCCGGAGGGACTCACGAAATGGAGGAAGAGGAGGAAGA
 GGAGCAGGACCCAGGAAGCCGGCCCTGCCACTCTCTCCGAGGACTGGAGAGCCTGAGGAGCCTCCAG
 CGGCAGCTGCTTTCCGCCAGCTGCAGAAGAACTCGGGCTGGGACACGATGGGGTCAAGTCAAGGGGC
 CCAGTGCA

ACGGCTACGCGGCCGCTCGAGCAGAACTCATCTCAGAAGAGGATCTGGCAGCAATGATATCCTGGATT
 ACAAGGATGACGACGATAAGGTTTAA

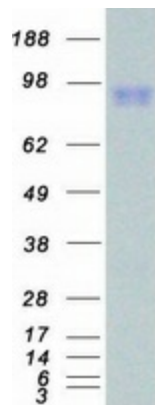
ACCN:	NM_014339
ORF Size:	2598 bp
OTI Disclaimer:	<p>Due to the inherent nature of this plasmid, standard methods to replicate additional amounts of DNA in E. coli are highly likely to result in mutations and/or rearrangements. Therefore, OriGene does not guarantee the capability to replicate this plasmid DNA. Additional amounts of DNA can be purchased from OriGene with batch-specific, full-sequence verification at a reduced cost. Please contact our customer care team at custsupport@origene.com or by calling 301.340.3188 option 3 for pricing and delivery.</p> <p>The molecular sequence of this clone aligns with the gene accession number as a point of reference only. However, individual transcript sequences of the same gene can differ through naturally occurring variations (e.g. polymorphisms), each with its own valid existence. This clone is substantially in agreement with the reference, but a complete review of all prevailing variants is recommended prior to use. More info</p>
OTI Annotation:	This clone was engineered to express the complete ORF with an expression tag. Expression varies depending on the nature of the gene.
Components:	The ORF clone is ion-exchange column purified and shipped in a 2D barcoded Matrix tube containing 10ug of transfection-ready, dried plasmid DNA (reconstitute with 100 ul of water).
Reconstitution Method:	<ol style="list-style-type: none"> 1. Centrifuge at 5,000xg for 5min. 2. Carefully open the tube and add 100ul of sterile water to dissolve the DNA. 3. Close the tube and incubate for 10 minutes at room temperature. 4. Briefly vortex the tube and then do a quick spin (less than 5000xg) to concentrate the liquid at the bottom. 5. Store the suspended plasmid at -20°C. The DNA is stable for at least one year from date of shipping when stored at -20°C.
RefSeq:	NM_014339.2
RefSeq Size:	3429 bp
RefSeq ORF:	2601 bp
Locus ID:	23765
UniProt ID:	Q96F46
Cytogenetics:	22q11.1
Protein Families:	Druggable Genome, Transmembrane
Protein Pathways:	Cytokine-cytokine receptor interaction
MW:	96.13 kDa

Gene Summary:

Interleukin 17A (IL17A) is a proinflammatory cytokine secreted by activated T-lymphocytes. It is a potent inducer of the maturation of CD34-positive hematopoietic precursors into neutrophils. The transmembrane protein encoded by this gene (interleukin 17A receptor; IL17RA) is a ubiquitous type I membrane glycoprotein that binds with low affinity to interleukin 17A. Interleukin 17A and its receptor play a pathogenic role in many inflammatory and autoimmune diseases such as rheumatoid arthritis. Like other cytokine receptors, this receptor likely has a multimeric structure. Alternative splicing results in multiple transcript variants encoding different isoforms. [provided by RefSeq, Feb 2014]

Product images:


Circular map for RC202390



Coomassie blue staining of purified IL17RA protein (Cat# [TP302390]). The protein was produced from HEK293T cells transfected with IL17RA cDNA clone (Cat# RC202390) using MegaTran 2.0 (Cat# [TT210002]).