

Product datasheet for **RC202387**

CLINT1 (NM_014666) Human Tagged ORF Clone

Product data:

Product Type:	Expression Plasmids
Product Name:	CLINT1 (NM_014666) Human Tagged ORF Clone
Tag:	Myc-DDK
Symbol:	CLINT1
Synonyms:	CLINT; ENTH; EPN4; EPNR
Mammalian Cell Selection:	Neomycin
Vector:	pCMV6-Entry (PS100001)
E. coli Selection:	Kanamycin (25 ug/mL)



[View online »](#)

ORF Nucleotide Sequence:

>RC202387 ORF sequence
 Red=Cloning site Blue=ORF Green=Tags(s)

TTTTGTAATACGACTCACTATAGGGCGGCCGGAATTCGTCGACTGGATCCGGTACCGAGGAGATCTGCC
 GCC**CGATCGCC**

ATGTTGAACATGTGGAAGGTGCGGAGCTGGTGGACAAAGCCACCAATGTTGTTATGAATTATTCAGAGA
 TCGAGTCTAAGGTTTCGAGAGGCAACGAACGATGATCCTTGGGGACCTTCTGGGCAACTCATGGGAGAGAT
 TGCCAAGGCTACATTTATGTATGAACAATTTCCAGAACTTATGAACATGCTTTGGTCACGAATGTTAAAA
 GACAACAAAAAGAATTGGAGAAGAGTTTATAAGTCGTTGCTGCTCCTAGCTTACCTCATAAGGAATGGAT
 CAGAGCGTGTGTTACAAGTGCCAGAGAACACATTTATGATTTACGATCCCTGGAAAATTACCACTTTGT
 AGATGAGCATGGTAAGGATCAAGGTATAAATATTCGACAGAAGGTGAAGGAATGGTTGAATTTGCCAG
 GATGACGACAGGCTTCGTGAAGAGCGAAAGAAAGCAAAGAAGAACAAGACAAGTATGTTGGGGTTTCT
 CAGACAGTGTGGAGGATTCAGATACAGTGAAAGATATGATCCTGAGCCCAAATCAAATGGGATGAGGA
 GTGGGATAAAAAAAGAGTGTCTTTCCATTCAGTGATAAATTAGGTGAGCTGAGTGATAAAATTTGGAAGC
 ACAATTGATGACACCATCAGCAAGTTCGGGAGGAAAGATAGAGAAGACTCTCCAGAAAGATGCAGCGACA
 GCGATGAGGAAAAGAAAGCGAGAAGAGGAGATCTCCAAAGGTGAATCAAAGATGAAGAGGAGACTGT
 GACGACAAAGCATATTCATATCACACAGGCCACAGAGACCACCACAACCAGACACAAGCGCACAGCAAAT
 CCTTCCAAAACCATGATCTTGGAGCAGCAGCACATTACACAGGGGACAAAGCAAGTCCAGATCAGAATG
 CTTCAACCCACACACCTCAGTCTTCAGTTAAGACTTCAGTGCCTAGCAGCAAGTCATCTGGTGACCTTGT
 TGATCTGTTTGTGGCACCAGCCAGTCAACAGGAGGATCAGCTGATTTATTCGGAGGATTTGCTGACTTT
 GGCTCAGCTGCTGCATCAGGCAGTTTCCCTTCCCAAGTAACAGCAACAAGTGGGAATGGAGACTTTGGTG
 ACTGGAGTGCCTCAACCAAGCCCATCAGGCCCTGTTGCTTCCAGTGGCGAGTCTTTGGCAGTGCCTC
 ACAGCCAGCGGTAGAACTTGTAGTGGCTCACAATCAGCTCTAGGCCACCTCCTGCTGCCTCAAATCT
 TCAGACCTGTTTGTCTTATGGGCTCGTCCCAGGCAACCATGACATCTTCCAGAGTATGAATTTCTCTA
 TGATGAGCACTAACACTGTGGGACTTGGTTGCCTATGTCAAGATCACAGAATACAGATATGGTCCAGAA
 ATCAGTCAGCAAAACCTTGCCTCTACTTGGTCTGACCCAGTGTAAACATCAGCCTAGACAACCTACTA
 CCTGGTATGCAGCCTTCAAACCCAGCAGCCATCACTGAATACAATGATTCAGCAACAGAATATGCAGC
 AGCCTATGAATGTGATGACTCAAAGTTTGGAGCTGTGAACCTCAGTTCTCCATCGAACATGCTTCTGT
 CCGGCCCAAACCTAATGCTTTGATAGGGGGACCCATGCCTATGAGCATGCCAATGTGATGACTGGCACC
 ATGGGAATGGCCCTCTTGGAAATACTCCGATGATGAACCAGAGCATGATGGGCATGAACATGAACATAG
 GGATGTCCGCTGCTGGGATGGGCTTACAGGCACAATGGGAATGGGCATGCCAACATAGCCATGACTTC
 TGGAACTGTGCAACCAAGCAAGATGCCTTTGCAAATTTGCGCAATTTTAGCAAA

ACGCGTACGCGGCCGCTCGAGCAGAACTCATCTCAGAAGAGGATCTGGCAGCAAATGATATCCTGGATT
 ACAAGGATGACGACGATAAGGTTTAA

Protein Sequence:

>RC202387 protein sequence
 Red=Cloning site Green=Tags(s)

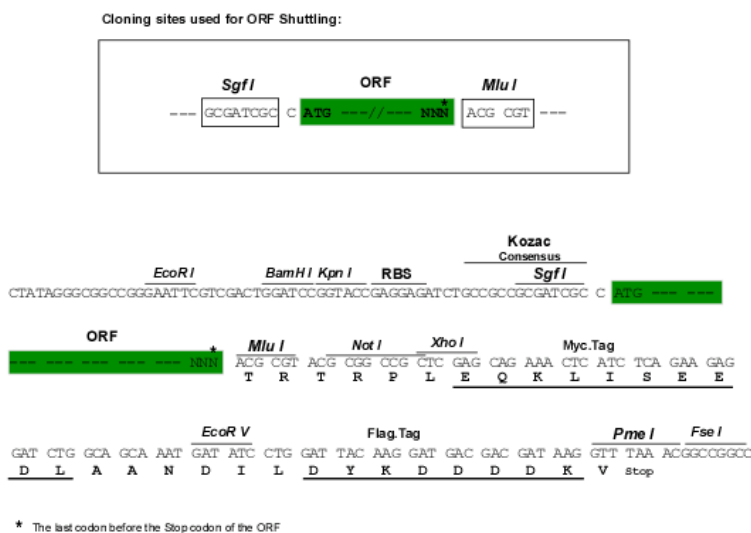
MLNMWKVRELVDKATNVVMNYSEIESKVREATNDDPWGPSGQLMGEIAKATFMYEQFPELMNMLWSRMLK
 DNKKNWRRVYKSLLLAYLIRNGSERVTSAREHIYDLRSLENYHFVDEHGKDQGINIRQVKELVEFAQ
 DDDRLREERKKAKKNKDKYVGVSSDSVGGFRYSERYDPEPKSKWDEEWDKNKSAFPFSDKL GELSDKIGS
 TIDDTISKFRRKDREDSPERCSDSEEEKARRGRSPKGEFKDEEETVTTKHIHITQATETTTTRHKRTAN
 PSKTIDLGAAAHYTGDKASPDQNASTHTPQSSVKT SVPSSKSSGDLVDLFDGTSQSTGGSADLFGGFADF
 GSAAASGSFSPQVTATSGNGDFGDWSAFNQAPSGPVASSGEFFGSASQPAVELVSGSQSALGPPPAASNS
 SDLFDL MGSSQATMTSSQSMNF SMMSTNTVGLGLPMSRSQNTDMVQKSVSKTLPSTWSDPSVNI SLDNLL
 PGMQPSKPQQPSLNTMIQQQNMQPMNVMTQSF GAVNLS SPSNMLPVRPQTNALIGGPMPSMPNVMGT
 MGMAPLGNTPMNMQSMGMNMNIGMSAAGMGLTGTMGMPNIAMTSGTVQPKQDAFANFANFSK

TRTRPLEQKLISEEDLAANDILDYKDDDDKV

Chromatograms: https://cdn.origene.com/chromatograms/mk6151_c08.zip

Restriction Sites: SgfI-MluI

Cloning Scheme:



ACCN: NM_014666

ORF Size: 1875 bp

OTI Disclaimer: The molecular sequence of this clone aligns with the gene accession number as a point of reference only. However, individual transcript sequences of the same gene can differ through naturally occurring variations (e.g. polymorphisms), each with its own valid existence. This clone is substantially in agreement with the reference, but a complete review of all prevailing variants is recommended prior to use. [More info](#)

OTI Annotation: This clone was engineered to express the complete ORF with an expression tag. Expression varies depending on the nature of the gene.

Components: The ORF clone is ion-exchange column purified and shipped in a 2D barcoded Matrix tube containing 10ug of transfection-ready, dried plasmid DNA (reconstitute with 100 ul of water).

Reconstitution Method:

1. Centrifuge at 5,000xg for 5min.
2. Carefully open the tube and add 100ul of sterile water to dissolve the DNA.
3. Close the tube and incubate for 10 minutes at room temperature.
4. Briefly vortex the tube and then do a quick spin (less than 5000xg) to concentrate the liquid at the bottom.
5. Store the suspended plasmid at -20°C. The DNA is stable for at least one year from date of shipping when stored at -20°C.

RefSeq: [NM_014666.4](#)

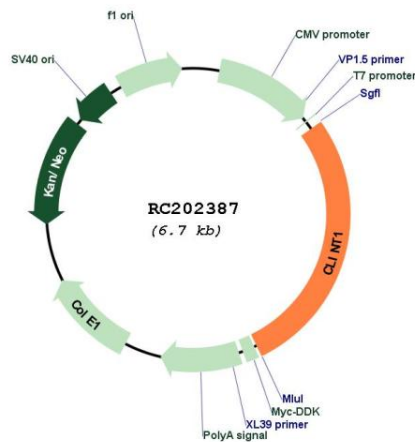
RefSeq Size: 4007 bp

RefSeq ORF: 1878 bp

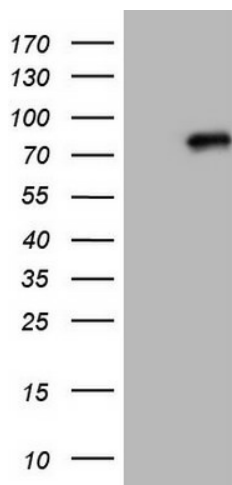
Locus ID: 9685
UniProt ID: [Q14677](#)
Cytogenetics: 5q33.3
Domains: ENTH
MW: 68.3 kDa

Gene Summary: This gene encodes a protein with similarity to the epsin family of endocytic adapter proteins. The encoded protein interacts with clathrin, the adapter protein AP-1 and phosphoinositides. This protein may be involved in the formation of clathrin coated vesicles and trafficking between the trans-Golgi network and endosomes. Mutations in this gene are associated with a susceptibility to schizophrenia and psychotic disorders. Alternate splicing results in multiple transcript variants. [provided by RefSeq, Sep 2010]

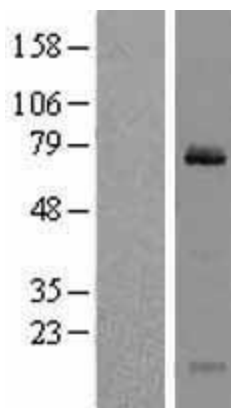
Product images:



Circular map for RC202387



HEK293T cells were transfected with the pCMV6-ENTRY control (Cat# [PS100001], Left lane) or pCMV6-ENTRY CLINT1 (Cat# RC202387, Right lane) cDNA for 48 hrs and lysed. Equivalent amounts of cell lysates (5 ug per lane) were separated by SDS-PAGE and immunoblotted with anti-CLINT1 (Cat# [TA805982]). Positive lysates [LY402360] (100ug) and [LC402360] (20ug) can be purchased separately from OriGene.



Western blot validation of overexpression lysate (Cat# [LY402360]) using anti-DDK antibody (Cat# [TA50011-100]). Left: Cell lysates from untransfected HEK293T cells; Right: Cell lysates from HEK293T cells transfected with RC202387 using transfection reagent MegaTran 2.0 (Cat# [TT210002]).