

Product datasheet for RC202385

HSD17B12 (NM_016142) Human Tagged ORF Clone

Product data:

Product Type:	Expression Plasmids
Product Name:	HSD17B12 (NM_016142) Human Tagged ORF Clone
Tag:	Myc-DDK
Symbol:	HSD17B12
Synonyms:	KAR; SDR12C1
Mammalian Cell Selection:	Neomycin
Vector:	pCMV6-Entry (PS100001)
E. coli Selection:	Kanamycin (25 ug/mL)
ORF Nucleotide Sequence:	>RC202385 representing NM_016142 Red=Cloning site Blue=ORF Green=Tags(s)

TTTTGTAATACGACTCACTATAGGGCGGCCGGGAATTCGTCGACTGGATCCGGTACCGAGGAGATCTGCC
GCC**CGATCGCC**

ATGGAGAGCGCTCTCCCGCCGCCGGCTTCTGTACTGGGTCGGCGGGCACCCTGGCCTACCTAGCCC
TGCGTATTTCTGACTCGCTCTTCACGGCCCTCCGGGTCTGGGAGTGGGAATGAGGCGGGGTCCGCC
GGGGCTCGGAGAAATGGCAGTTGTCACAGGTAGTACTGATGGAATTGGAAAATCATATGCAGAAGAGTTA
GCAAAGCATGGAATGAAGTTGCTTATCAGCAGATCAAAGATAAACTTGACCAGTTTCCAGTGAAA
TAAAAGAAAAATCAAAGTGGAGACAAGAACCATTGCTGTTGACTTTGCATCAGAAGATATTTATGATAA
AATTAACACAGGCTTGGCTGGTCTTGAATCGGCATCTTGTGAAACAACGTGGGAATGTCGTATGAGTAT
CCTGAATACTTTTTGGATGTTCCCTGACTTGGACAATGTGATCAAGAAAATGATAAATATTAATATCTTT
CTGTTTGAAGATGACACAATTGGTACTGCCTGGCATGGTGGAAAGATCCAAAGGGGCTATTCTGAACAT
TTCATCTGGCAGTGGCATGCTCCCTGTCCCACTTTGACCATCTATTCTGCAACCAAGACTTTTGTAGAT
TTCTTCTCTCAGTGCCTCCATGAGGAGTATAGGAGCAAGGGCGTCTTTGTGCAGAGTGTCTGCCACT
TCGTAGCTACAAAACGGCTAAAATCCGGAAGCCAACCTTTGGATAAGCCCTCTCCGGAGACGTTTGTGAA
GTCTGCAATTAACAGTCGGCTGCAATCCCGAACCAATGGATACCTGATCCATGCTCTTATGGGCTCG
ATAATCTCAAACCTGCCTTCTGGATTTATTTGAAAATAGTCATGAATATGAACAAGTCTACACGGGCTC
ACTATCTGAAGAAAACCAAGAAGAAC

ACGCGTACGCGGCCGCTCGAGCAGAACTCATCTCAGAAGAGGATCTGGCAGCAATGATATCCTGGATT
ACAAGGATGACGACGATAAGGTTTAA



[View online »](#)

Protein Sequence: >RC202385 representing NM_016142
Red=Cloning site Green=Tags(s)

MESALPAAGFLYWVGAGTVAYLALRISYSLFTALRVWVGNEAGVGPGLGEWAVVTGSTDGIGKSYAEEL
 AKHGMKVVLISRSKDKLDQVSSEIKEKFKVETRTIAVDFASEDIYDKIKTGLAGLEIGILVNVGMSYEY
 PEYFLDVPDLDNVIKKMININILSVCKMTQLVLPGMVERSKGAILNISSGSGMLPVPLLTIIYSATKTFVD
 FFSQCLHEEYRSKGVFVQSVLPYFVATKLAKIRKPTLDKPSPEFVKSAIKTVGLQSRNGLYIHALMGS
 IISNLPSWIYLKIVMNMNKSTRAHYLKKTKKN

TRTRPLEQKLISEEDLAANDILDYKDDDDKV

Chromatograms: https://cdn.origene.com/chromatograms/mk8112_d06.zip

Restriction Sites: SgfI-MluI

Cloning Scheme:



ACCN: NM_016142

ORF Size: 936 bp

OTI Disclaimer: The molecular sequence of this clone aligns with the gene accession number as a point of reference only. However, individual transcript sequences of the same gene can differ through naturally occurring variations (e.g. polymorphisms), each with its own valid existence. This clone is substantially in agreement with the reference, but a complete review of all prevailing variants is recommended prior to use. [More info](#)

OTI Annotation: This clone was engineered to express the complete ORF with an expression tag. Expression varies depending on the nature of the gene.

Components: The ORF clone is ion-exchange column purified and shipped in a 2D barcoded Matrix tube containing 10ug of transfection-ready, dried plasmid DNA (reconstitute with 100 ul of water).

Reconstitution Method:

1. Centrifuge at 5,000xg for 5min.
2. Carefully open the tube and add 100ul of sterile water to dissolve the DNA.
3. Close the tube and incubate for 10 minutes at room temperature.
4. Briefly vortex the tube and then do a quick spin (less than 5000xg) to concentrate the liquid at the bottom.
5. Store the suspended plasmid at -20°C. The DNA is stable for at least one year from date of shipping when stored at -20°C.

RefSeq: [NM_016142.3](#)

RefSeq Size: 2556 bp

RefSeq ORF: 939 bp

Locus ID: 51144

UniProt ID: [Q53GQ0](#)

Cytogenetics: 11p11.2

Domains: adh_short

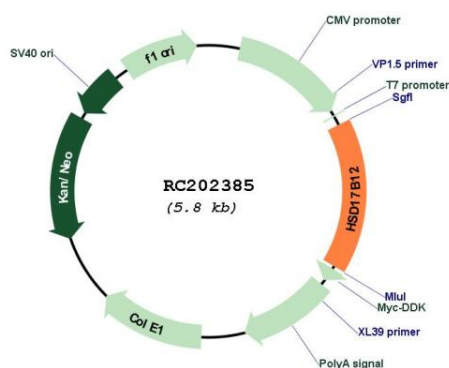
Protein Families: Druggable Genome, Transmembrane

Protein Pathways: Androgen and estrogen metabolism, Biosynthesis of unsaturated fatty acids, Metabolic pathways

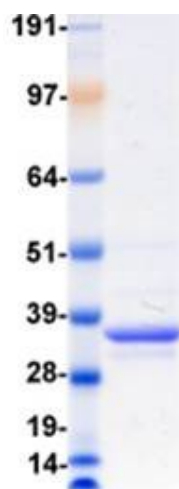
MW: 34.3 kDa

Gene Summary: This gene encodes a very important 17beta-hydroxysteroid dehydrogenase (17beta-HSD) that converts estrone into estradiol in ovarian tissue. This enzyme is also involved in fatty acid elongation. [provided by RefSeq, Oct 2011]

Product images:



Circular map for RC202385



Coomassie blue staining of purified HSD17B12 protein (Cat# [TP302385]). The protein was produced from HEK293T cells transfected with HSD17B12 cDNA clone (Cat# RC202385) using MegaTran 2.0 (Cat# [TT210002]).