

Product datasheet for **RC202384**

TMPRSS4 (NM_183247) Human Tagged ORF Clone

Product data:

Product Type:	Expression Plasmids
Product Name:	TMPRSS4 (NM_183247) Human Tagged ORF Clone
Tag:	Myc-DDK
Symbol:	TMPRSS4
Synonyms:	membrane-type serine protease 2; MT-SP2; MT-SP2, TMPRSS3; TMPRSS3; transmembrane protease, serine 4; transmembrane serine protease 3; type II membrane serine protease
Mammalian Cell Selection:	Neomycin
Vector:	pCMV6-Entry (PS100001)
E. coli Selection:	Kanamycin (25 ug/mL)
ORF Nucleotide Sequence:	>RC202384 ORF sequence Red=Cloning site Blue=ORF Green=Tags(s)

TTTTGTAATACGACTCACTATAGGGCGGCCGGAATTCGTCGACTGGATCCGGTACCGAGGAGATCTGCC
GCC**CGATCGCC**

ATGGATCCTGACAGTGATCAACCTCTGAACAGCCTCGATGTCAAACCCCTGCGCAAACCCCGTATCCCCA
TGGAGACCTTCAGAAAGGTGGGGATCCCCATCATAGCACTACTGAGCCTGGCGAGTATCATCATTGT
GGTTGTCCTCATCAAGGTGATTCTGGATAAATACTACTTCCTCTGCGGGCAGCCTCTCCACTTCATCCCC
AGGAAGCAGCTGTGTGACGGAGAGCTGGACTGTCCCTTGGGGGAGGACGAGGAGCACTGTGTCAAGAGCT
TCCCCGAAGGGCCTGCAGTGGCAGTCCGCCTCTCCAAGGACCGATCCACACTGCAGGTGCTGGACTCGGC
CACAGGGAAGTGGTTCTCTGCCTGTTTCGACAACCTCACAGAAGCTCTCGCTGAGACAGCCTGTAGGCAG
ATGGGCTACAGCAGCAAACCCACTTTCAGAGCTGTGGAGATTGGCCAGACCAGGATCTGGATGTTGTTG
AAATCACAGAAAACAGCCAGGAGCTTCGCATGCGGAACTCAAGTGGGCCCTGTCTCTCAGGCTCCCTGGT
CTCCCTGCACTGTCTTGCCCTGTGGGAAGAGCCTGAAGACCCCCCGTGTGGTGGTGGGGAGGAGGCCCT
GTGGATTCTTGGCCTTGGCAGGTCAGCATCCAGTACGACAAAACAGCACGTCTGTGGAGGGAGCATCCTGG
ACCCCACTGGGTCTCACGGCAGCCCACTGCTTCAGGAAACATACCGATGTGTTCAACTGGAAGGTGCG
GGCAGGCTCAGACAACTGGGCAGCTTCCCATCCCTGGCTGTGGCCAAGATCATCATATTGAATTCAAC
CCCATGTACCCCAAAGACAATGACATCGCCCTCATGAAGCTGCAGTTCCTCACTTTCTCAGGCACAG
TCAGGCCCATCTGTCTGCCCTTCTTTGATGAGGAGCTCACTCCAGCCACCCCACTCTGGATCATTGGATG
GGCTTTACGAAGCAGAATGGAGGG

ACGCGTACGCGGCCGCTCGAGCAGAAAACCTCATCTCAGAAGAGGATCTGGCAGCAAATGATATCCTGGATT
ACAAGGATGACGACGATAAGGTTTAA



[View online »](#)

Reconstitution Method:

1. Centrifuge at 5,000xg for 5min.
2. Carefully open the tube and add 100ul of sterile water to dissolve the DNA.
3. Close the tube and incubate for 10 minutes at room temperature.
4. Briefly vortex the tube and then do a quick spin (less than 5000xg) to concentrate the liquid at the bottom.
5. Store the suspended plasmid at -20°C. The DNA is stable for at least one year from date of shipping when stored at -20°C.

RefSeq: [NM_183247.1](#), [NP_899070.1](#)

RefSeq Size: 1983 bp

RefSeq ORF: 1007 bp

Locus ID: 56649

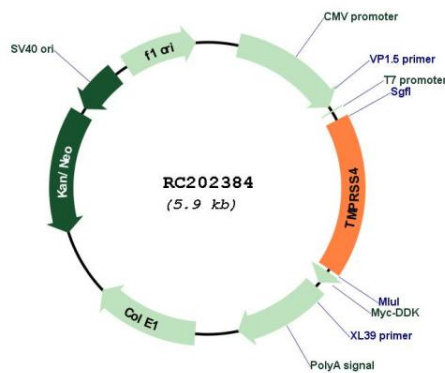
Cytogenetics: 11q23.3

Protein Families: Druggable Genome, Protease, Transmembrane

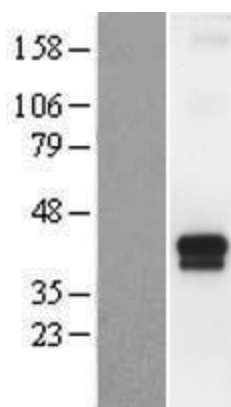
MW: 37.2 kDa

Gene Summary: This gene encodes a member of the serine protease family. Serine proteases are known to be involved in a variety of biological processes, whose malfunction often leads to human diseases and disorders. This gene was identified as a gene overexpressed in pancreatic carcinoma. The encoded protein is membrane bound with a N-terminal anchor sequence and a glycosylated extracellular region containing the serine protease domain. Multiple transcript variants encoding different isoforms have been found for this gene. [provided by RefSeq, Jul 2008]

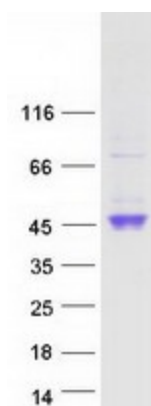
Product images:



Circular map for RC202384



Western blot validation of overexpression lysate (Cat# [LY405242]) using anti-DDK antibody (Cat# [TA50011-100]). Left: Cell lysates from untransfected HEK293T cells; Right: Cell lysates from HEK293T cells transfected with RC202384 using transfection reagent MegaTran 2.0 (Cat# [TT210002]).



Coomassie blue staining of purified TMPRSS4 protein (Cat# [TP302384]). The protein was produced from HEK293T cells transfected with TMPRSS4 cDNA clone (Cat# RC202384) using MegaTran 2.0 (Cat# [TT210002]).