

## Product datasheet for **RC202381**

### SEPTIN10 (NM\_144710) Human Tagged ORF Clone

#### Product data:

Product Type:	Expression Plasmids
Product Name:	SEPTIN10 (NM_144710) Human Tagged ORF Clone
Tag:	Myc-DDK
Symbol:	SEPTIN10
Synonyms:	SEPT10
Mammalian Cell Selection:	Neomycin
Vector:	pCMV6-Entry (PS100001)
E. coli Selection:	Kanamycin (25 ug/mL)



[View online »](#)

**ORF Nucleotide Sequence:**

>RC202381 ORF sequence  
 Red=Cloning site Blue=ORF Green=Tags(s)

TTTTGTAATACGACTCACTATAGGGCGGCCGGAATTCGTCGACTGGATCCGGTACCGAGGAGATCTGCC  
 GCC**CGCATCGCC**

ATGGCCTCTCCGAGGTGGCGCGCACCTGCTCTTTTCAGTCTCACATGGCAACGAAAACAACTTGTATGT  
 CTTCAACAAGGATCAGATGATGAACAGATAAAAAGAGAAAACATTCGTTTCGTTGACTATGTCTGGCCATGT  
 TGGTTTTGAGAGTTTGCCTGATCAGCTGGTGAACAGATCCATTCAGCAAGTTTTCTGCTTTAATATTCTC  
 TGTGTGGGGGAACTGGAATTGGAAAATCAACTGATTGACACATTGTTAATACTAATTTTGAAGACT  
 ATGAATCCTCACATTTTGGCCAAATGTTAAACTTAAAGCTCAGACATATGAACTCCAGGAAAGTAAATGT  
 TCAATTGAAATGACCATTGTGAATACAGTGGGATTTGGTGACCAATAAATAAAGAAGAGAGCTACCAA  
 CCAATAGTTGACTACATAGATGCTCAGTTTGGGCCTATCTCCAAGAAGAACTGAAGATTAAGCGTTCTC  
 TCTTTACCTACCATGATTCTCGCATCCATGTGTCTCTACTTTCATTTCCCGACAGGCCACTCTCTGAA  
 GACTTGTATCTTTAACCATGAAGAACCTTGACAGCAAGGTAACATTATACCAGTATTGCCAAAGCA  
 GATACGGTTTCTAAAACGAATTACAGAAGTTTAAAGTCAAGCTCATGAGTGAATTGGTCAGCAATGGCG  
 TCCAGATATACCAGTTCCAACGGATGATGACACTATTGCTAAGGTCAACGCTGCAATGAATGGACAGTT  
 GCCGTTTGTGTTGTGGGAAGTATGGATGAGGTAAAAGTCGGAACAAGATGGTCAAAGCTGCCAGTAC  
 CCTTGGGGTGTGTACAAGTGGAAAATGAAAACCACTGTGACTTTGTAAGCTGCCGGAAATGCTCATT  
 GTACAAATATGGAGGACCTGCGAGAGCAGACCCATACCAGGCACTATGAGCTTTACAGGCGCTGCAAACT  
 GGAGGAAATGGGCTTTACAGATGTGGGCCAGAAAACAAGCCAGTCAGTGTTCAAGAGACCTATGAAGCC  
 AAAAGACATGAGTTCCATGGTGAACGTCAGAGGAAGGAAGAAGAAATGAAACAGATGTTTGTGCAGCGAG  
 TAAAGGAGAAAGAAGCCATATTGAAAGAAGCTGAGAGAGAGCTACAGGCCAAATTTGAGCACCTTAAGAG  
 ACTTACCAGAAGAAGAGAGAATGAAGCTTGAAGAAAAGAGAAGACTTTTGGAAGAAGAAATAATTGCTTTC  
 TCTAAAAGAAAGCTACCTCCGAGATATTTACAGCCAGTCCTTTCTGGCAACAGGCAGCAACCTGAGGA  
 AGGACAAGGACCGTAAGAACTCCAATTTTTTG

**ACGCGT**ACGCGGCCGCTCGAGCAGAACTCATCTCAGAAGAGGATCTGGCAGCAATGATATCCTGGATT  
 ACAAGGATGACGACGATAAGGTTTAA

**Protein Sequence:**

>RC202381 protein sequence  
 Red=Cloning site Green=Tags(s)

MASSEVARHLLFQSHMATKTTCMSSQGSDDDEQIKRENIRSLTMSGHVGFEESLPDQLVNRSIQQGFENIL  
 CVGETGIGKSTLIDTLFNTNFEDYESSHFCPNVKLKAQTYELQESNVQLKLTIVNTVGFQDQINKEESYQ  
 PIVDYIDAQFEAYLQEELKIKRSLFTYHDSRIHVCLYFISPTGHSKTLDLLTMKNLDSKVNIIPVIAKA  
 DTVSKTELQKFKIKLMSSELVSNVQIYQFPTDDDTIAKVNAAMNGQLPFVAVGSMDEVKVGKMKVQARQY  
 PWGVVQVENENHCDFVKLREMLICTNMEDLREQTHRHYELYRRCKLEEMGFTDVGPEKPVSVQETYE  
 KRHEFHGERQRKEEEMQMVFQVKEKEAILEAERELQAKFEHLKRLHQEERMKLEEKRRLLLEEIIAF  
 SKKKATSEIFHSQSFLATGSNLRKDKDRKNSNFL

**TR**TRPLEQKLISEEDLAANDILDYKDDDDKV

**Chromatograms:**

[https://cdn.origene.com/chromatograms/mk6538\\_b10.zip](https://cdn.origene.com/chromatograms/mk6538_b10.zip)

**Restriction Sites:**

Sgfl-Mlul

**Cloning Scheme:**


**ACCN:** NM\_144710

**ORF Size:** 1362 bp

**OTI Disclaimer:** The molecular sequence of this clone aligns with the gene accession number as a point of reference only. However, individual transcript sequences of the same gene can differ through naturally occurring variations (e.g. polymorphisms), each with its own valid existence. This clone is substantially in agreement with the reference, but a complete review of all prevailing variants is recommended prior to use. [More info](#)

**OTI Annotation:** This clone was engineered to express the complete ORF with an expression tag. Expression varies depending on the nature of the gene.

**Components:** The ORF clone is ion-exchange column purified and shipped in a 2D barcoded Matrix tube containing 10ug of transfection-ready, dried plasmid DNA (reconstitute with 100 ul of water).

- Reconstitution Method:**
1. Centrifuge at 5,000xg for 5min.
  2. Carefully open the tube and add 100ul of sterile water to dissolve the DNA.
  3. Close the tube and incubate for 10 minutes at room temperature.
  4. Briefly vortex the tube and then do a quick spin (less than 5000xg) to concentrate the liquid at the bottom.
  5. Store the suspended plasmid at -20°C. The DNA is stable for at least one year from date of shipping when stored at -20°C.

**RefSeq:** [NM\\_144710.5](#)

**RefSeq Size:** 3256 bp

**RefSeq ORF:** 1365 bp

**Locus ID:** 151011

**UniProt ID:** [Q9P0V9](#)

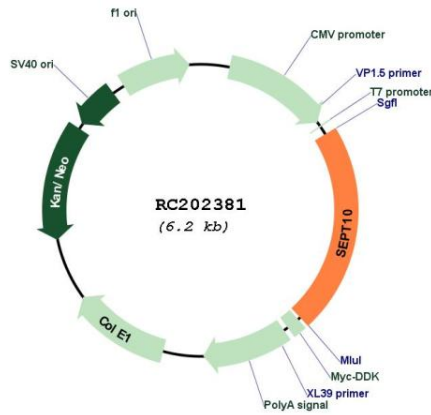
**Cytogenetics:** 2q13

**Domains:** GTP\_CDC

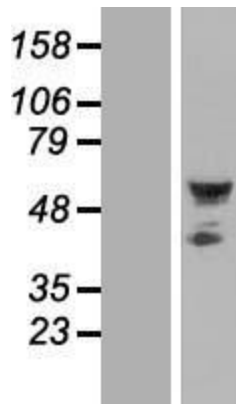
**MW:** 52.6 kDa

**Gene Summary:** This gene encodes a member of the septin family of cytoskeletal proteins with GTPase activity. This protein localizes to the cytoplasm and nucleus and displays GTP-binding and GTPase activity. A pseudogene for this gene is located on chromosome 8. Alternative splicing results in multiple transcript variants. [provided by RefSeq, Apr 2012]

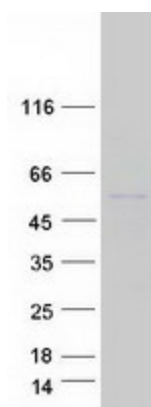
**Product images:**



Circular map for RC202381



Western blot validation of overexpression lysate (Cat# [LY408161]) using anti-DDK antibody (Cat# [TA50011-100]). Left: Cell lysates from untransfected HEK293T cells; Right: Cell lysates from HEK293T cells transfected with RC202381 using transfection reagent MegaTran 2.0 (Cat# [TT210002]).



Coomassie blue staining of purified SEPTIN10 protein (Cat# [TP302381]). The protein was produced from HEK293T cells transfected with SEPTIN10 cDNA clone (Cat# RC202381) using MegaTran 2.0 (Cat# [TT210002]).