

## Product datasheet for **RC202374**

### UBP43 (USP18) (NM\_017414) Human Tagged ORF Clone

#### Product data:

Product Type:	Expression Plasmids
Product Name:	UBP43 (USP18) (NM_017414) Human Tagged ORF Clone
Tag:	Myc-DDK
Symbol:	UBP43
Synonyms:	ISG43; PTORCH2; UBP43
Mammalian Cell Selection:	Neomycin
Vector:	pCMV6-Entry (PS100001)
E. coli Selection:	Kanamycin (25 ug/mL)
ORF Nucleotide Sequence:	>RC202374 ORF sequence Red=Cloning site Blue=ORF Green=Tags(s)

TTTTGTAATACGACTCACTATAGGGCGCCGGGAATTCGTCGACTGGATCCGGTACCGAGGAGATCTGCC  
GCC**CGATCGC**C

ATGAGCAAGGCGTTTGGGCTCCTGAGGCAAATCTGTCAGTCCATCCTGGCTGAGTCTCGCAGTCCCCGG  
CAGATCTTGAAGAAAAGAAGGAAGAAGACAGCAACATGAAGAGAGAGCAGCCAGAGAGCGTCCCAGGGC  
CTGGGACTACCTCATGGCCTGGTTGGTTACACAACATTGGACAGACCTGCTGCCTAACTCCTTGATT  
CAGGTGTTGTAATGAATGTGGACTTCACCAGGATATTGAAGAGGATCACGGTCCCGAGGGAGCTGACG  
AGCAGAGGAGAAGCGTCCCTTTCCAGATGCTTCTGCTGCTGGAGAAGATGCAGGACAGCCGGCAGAAAGC  
AGTGCGGCCCTGGAGCTGGCCTACTGCCTGCAGAAGTGCAACGTGCCCTTGTTCCTCAACATGATGCT  
GCCCAACTGTACCTCAAACCTCTGGAACCTGATTAAGGACCAGATCACTGATGTGCACTTGGTGGAGAGAC  
TGCAGGCCCTGTATACGATCCGGGTGAAGGACTCCTTGATTTGCGTTGACTGTGCCATGGAGAGTAGCAG  
AAACAGCAGCATGCTCACCTCCCACTTCTCTTTTTGATGTGGACTCAAAGCCCCTGAAGACACTGGAG  
GACGCCCTGCACTGCTTCTTCCAGCCCAGGGAGTTATCAAGCAAAAGCAAGTGCTTCTGTGAGAACTGTG  
GGAAGAAGACCCGTGGGAAACAGGTCTTGAAGCTGACCCATTTGCCCCAGACCCTGACAATCCACCTCAT  
GCGATTCTCCATCAGGAATTCACAGACGAGAAAAGATCTGCCACTCCCTGTACTTCCCCCAGAGCTTGGAT  
TTCAGCCAGATCCTTCCAATGAAGCGAGAGTCTTGTGATGCTGAGGAGCAGTCTGGAGGGCAGTATGAGC  
TTTTTGCTGTGATTGCGCACGTGGGAATGGCAGACTCCGGTCATTACTGTGTCTACATCCGGAATGCTGT  
GGATGGAAAATGTTCTGCTTCAATGACTCCAATATTTGCTTGGTGTCTCTGGGAAGACATCCAGTGTACC  
TACGGAATCCTAACTACCACTGGCAGGAACTGCATATCTTCTGGTTTACATGAAGATGGAGTGC

**ACGCGT**ACGCGGCCGCTCGAGCAGAAACTCATCTCAGAAGAGGATCTGGCAGCAAATGATATCCTGGATT  
ACAAGGATGACGACGATAAGGTTTAA



[View online »](#)

**Protein Sequence:** >RC202374 protein sequence  
Red=Cloning site Green=Tags(s)

MSKAFGLLRQICQSILAESSQSPADLEEKKEEDSNMKREQPRERPRAWDYPHGLVGLHNIQTCCLNLSI  
 QVFVMNVDFTRILKRITVPRGADEQRRSVPFQMLLLLEKMQDSRQKAVRPLELAYCLQKCNVPLFVQHDA  
 AQLYLKLNLIKDQITDVHLVERLQALYTRVKDSLICVDCAMESSRNSSMLTLPLSLFDVDSKPLKTL  
 DALHCFQPRELSSKSKCFCECGKTRGKQVLKLTHTLPQTLTIHLMRFSIRNSQTRKICHSLYFPQSLD  
 FSQILPMKRESCDAEEQSGGQYELFAVIAHVGMADSGHYCVYIRNAVDGKWF CFNDSNICLVSWEDIQCT  
 YGNPNYHWQETAYLLVYMKMEC

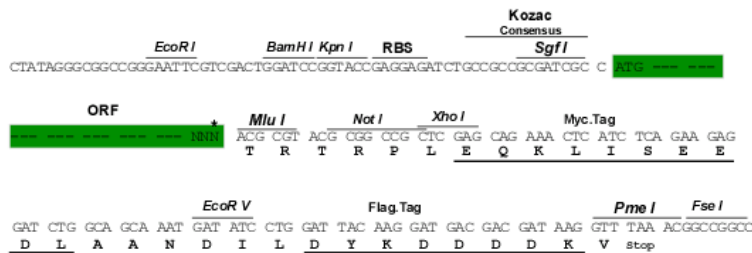
TRTRPLEQKLISEEDLAANDILDYKDDDDKV

**Chromatograms:** [https://cdn.origene.com/chromatograms/mk6244\\_d02.zip](https://cdn.origene.com/chromatograms/mk6244_d02.zip)

**Restriction Sites:** SgfI-MluI

**Cloning Scheme:**

Cloning sites used for ORF Shuttling:



\* The last codon before the Stop codon of the ORF

**ACCN:** NM\_017414

**ORF Size:** 1116 bp

**OTI Disclaimer:** The molecular sequence of this clone aligns with the gene accession number as a point of reference only. However, individual transcript sequences of the same gene can differ through naturally occurring variations (e.g. polymorphisms), each with its own valid existence. This clone is substantially in agreement with the reference, but a complete review of all prevailing variants is recommended prior to use. [More info](#)

**OTI Annotation:** This clone was engineered to express the complete ORF with an expression tag. Expression varies depending on the nature of the gene.

**Components:** The ORF clone is ion-exchange column purified and shipped in a 2D barcoded Matrix tube containing 10ug of transfection-ready, dried plasmid DNA (reconstitute with 100 ul of water).

**Reconstitution Method:**

1. Centrifuge at 5,000xg for 5min.
2. Carefully open the tube and add 100ul of sterile water to dissolve the DNA.
3. Close the tube and incubate for 10 minutes at room temperature.
4. Briefly vortex the tube and then do a quick spin (less than 5000xg) to concentrate the liquid at the bottom.
5. Store the suspended plasmid at -20°C. The DNA is stable for at least one year from date of shipping when stored at -20°C.

**Note:** Plasmids are not sterile. For experiments where strict sterility is required, filtration with 0.22um filter is required.

**RefSeq:** [NM\\_017414.4](#)

**RefSeq Size:** 2037 bp

**RefSeq ORF:** 1119 bp

**Locus ID:** 11274

**UniProt ID:** [Q9UMW8](#)

**Cytogenetics:** 22q11.21

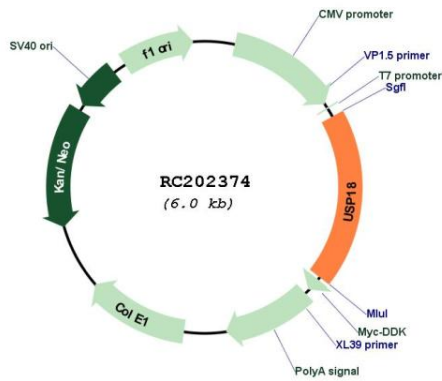
**Domains:** UCH

**Protein Families:** Druggable Genome, Protease

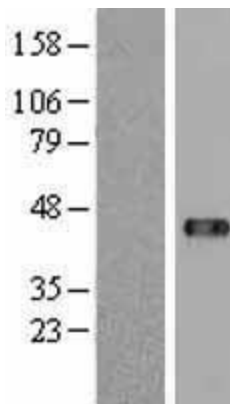
**MW:** 43 kDa

**Gene Summary:** The protein encoded by this gene belongs to the ubiquitin-specific proteases (UBP) family of enzymes that cleave ubiquitin from ubiquitinated protein substrates. It is highly expressed in liver and thymus, and is localized to the nucleus. This protein efficiently cleaves only ISG15 (a ubiquitin-like protein) fusions, and deletion of this gene in mice results in a massive increase of ISG15 conjugates in tissues, indicating that this protein is a major ISG15-specific protease. Mice lacking this gene are also hypersensitive to interferon, suggesting a function of this protein in downregulating interferon responses, independent of its isopeptidase activity towards ISG15. [provided by RefSeq, Sep 2011]

Product images:



Circular map for RC202374



Western blot validation of overexpression lysate (Cat# [LY413772]) using anti-DDK antibody (Cat# [TA50011-100]). Left: Cell lysates from un-transfected HEK293T cells; Right: Cell lysates from HEK293T cells transfected with RC202374 using transfection reagent MegaTran 2.0 (Cat# [TT210002]).