

Product datasheet for **RC202366**

AP1M1 (NM_032493) Human Tagged ORF Clone

Product data:

Product Type:	Expression Plasmids
Product Name:	AP1M1 (NM_032493) Human Tagged ORF Clone
Tag:	Myc-DDK
Symbol:	AP1M1
Synonyms:	AP47; CLAPM2; CLTNM; MU-1A; mu1A
Mammalian Cell Selection:	Neomycin
Vector:	pCMV6-Entry (PS100001)
E. coli Selection:	Kanamycin (25 ug/mL)



[View online »](#)

ORF Nucleotide Sequence:

>RC202366 ORF sequence
 Red=Cloning site Blue=ORF Green=Tags(s)

TTTTGTAATACGACTCACTATAGGGCGGCCGGAATTCGTCGACTGGATCCGGTACCGAGGAGATCTGCC
 GCC**GCGATCGCC**

ATGTCCGCCAGCGCCGTCTACGTGCTGGACCTGAAGGGCAAGGTGCTCATCTGCCGAACTACCGTGGCG
 ACGTGGACATGTAGAGGTGGAGCACTTATGCCCATCCTGATGGAGAAGGAGGAGGGGATGCTGTC
 GCCCATCTGGCCACGGGGGGTCCGTTTCATGTGGATCAAACACAACAACCTGTATCTGGTTGCCACA
 TCCAAGAAGAACGCGTGCCTGCTGCTTTCTTTCTCTATAAGGTGGTGCAGGTGTTTTCCGAGT
 ACTTCAAGGAGCTGGAGGAGGAGCATCCGGGACAACCTTTGTTATCATCTACGAGCTGCTGGACGAGCT
 CATGGACTTCGGTACCCCCAGACCACCACAGCAAGATCCTGCAGGAGTACATCACTCAGGAAGGCCAC
 AAGCTGGAACAGGGCCCCGGCCACCAGCCACCGTACCAACGCGGTGCTTGGCGTCCGAAGGCA
 TCAAGTATCGGAAGAATGAGGTGTTCTTGGACGTCATCGAGTCTGTCAACCTCTTGGTCAAGGCAACGG
 CAATGTCTGCGCAGGAGATCGTGGGTCATCAAGATGCGAGTCTTCTCTCGGGCATGCCGAGCTG
 CGCTGGGCTCAACGACAAGGTCTTTGACAACACGGGCCGGCAAAGCAAAATCCGTGGAGCTGG
 AGGATGTGAAGTCCACAGTGTGTGCGCTATCACGCTTCGAGAATGACCGCACCATCTCTTATCCC
 ACCCGACGGCGAGTTCGAGCTCATGTCCTACCGTCTCAACACCCACGTCGAAGCCTTTGATATGGATCGAG
 TCGGTGATCGAGAAGCACTCCCACAGCCGATCGAGTACATGATCAAGGCCAAAAGCCAGTTCAAGCGGC
 GGTCAACAGCCAACAACGTGGAGATCCACATCCCGTGCCAATGATGCCGACTCACCAAGTTCAGAGC
 GACGGTGGGAGCGTTAAGTGGTCCCCGAGAACAGCGAGATTGTGTGGTCCATCAAGTCTTCCGGGC
 GGCAAGGAGTACCTGATCGGGCCACTTCGGCTGCCTAGTGTGGAGGCCGAAGACAAGGAGGGCAAGC
 CCCCAGTCAAGTTCGAGATCCCTTACTTCACTACCTCCGGCATCCAGGTGCGCTACCTGAAGAT
 CATTGAGAAGAGTGGGTACCAGGCCCTGCCCTGGGTGCGTTATATCACGCAGAATGGAGATTACCAGCTC
 CGGACCCAG

ACGCGGCCGCTCGAGCAGAACTCATCTCAGAAGAGGATCTGGCAGCAAATGATATCCTGGA
TTACAAGGATGACGACGATAAGGTTTAA

Protein Sequence:

>RC202366 protein sequence
 Red=Cloning site Green=Tags(s)

MSASAVYVLDLKGKVLICRNYRGDVMSEVEHFMPILMEKEEEGMLSPILAHGGVRFMWIKHNNLYLVAT
 SKKNACVSLVFSFLYKVVQVFSEYFKELEEEESIRDNFVIIYELDELMDFGYPQTDSKILQEYITQEGH
 KLETGAPRPPATVTNAVSWRSEGIKYRKNEVFLDVIESVNLVSANGNLRSEIVGSIKMRVFLSGMPEL
 RLGLNDKVLFDNTGRGKSKSVELEDVKFHQCVRLSRFENDRTISFIPDGEFELMSYRLNTHVKPLIWE
 SVIEKHSRRIEYMIKAKSQFKRRSTANNVEIHIPVNDADSPKFKTTVGSVKWVPENSEIWSIKSFPG
 GKEYLMRAHFGFLPSVEAEDKEGKPPISVKFEIPYFTTSGIQVRYLKIIEKSGYQALPWVRYITQNGDYQL
 RTQ

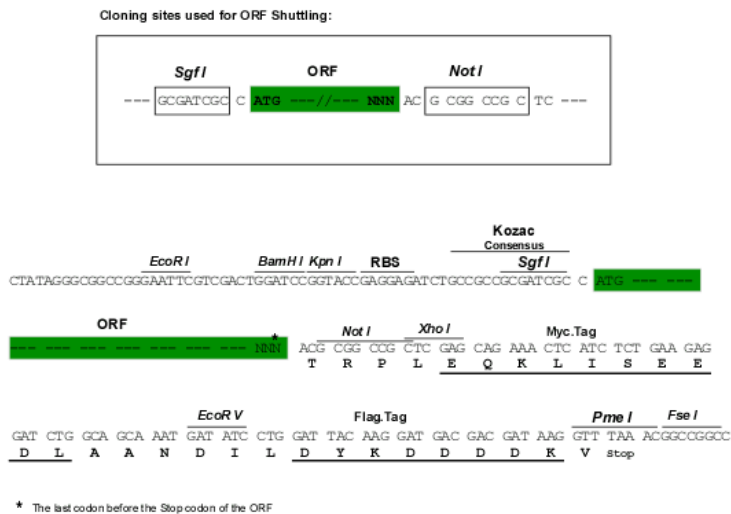
TRPLEQKLISEEDLAANDILDYKDDDDKV

Chromatograms:

https://cdn.origene.com/chromatograms/mk6800_f07.zip

Restriction Sites:

Sgfl-NotI

Cloning Scheme:


ACCN: NM_032493

ORF Size: 1269 bp

OTI Disclaimer: The molecular sequence of this clone aligns with the gene accession number as a point of reference only. However, individual transcript sequences of the same gene can differ through naturally occurring variations (e.g. polymorphisms), each with its own valid existence. This clone is substantially in agreement with the reference, but a complete review of all prevailing variants is recommended prior to use. [More info](#)

OTI Annotation: This clone was engineered to express the complete ORF with an expression tag. Expression varies depending on the nature of the gene.

Components: The ORF clone is ion-exchange column purified and shipped in a 2D barcoded Matrix tube containing 10ug of transfection-ready, dried plasmid DNA (reconstitute with 100 ul of water).

Reconstitution Method:

1. Centrifuge at 5,000xg for 5min.
2. Carefully open the tube and add 100ul of sterile water to dissolve the DNA.
3. Close the tube and incubate for 10 minutes at room temperature.
4. Briefly vortex the tube and then do a quick spin (less than 5000xg) to concentrate the liquid at the bottom.
5. Store the suspended plasmid at -20°C. The DNA is stable for at least one year from date of shipping when stored at -20°C.

Note: Plasmids are not sterile. For experiments where strict sterility is required, filtration with 0.22um filter is required.

RefSeq: [NM_032493.4](#)

RefSeq Size: 2373 bp

RefSeq ORF: 1272 bp

Locus ID: 8907

UniProt ID: [Q9BXS5](#)

Cytogenetics: 19p13.11

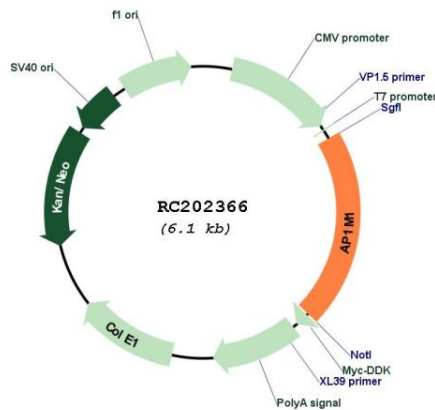
Domains: Adap_comp_sub

Protein Pathways: Lysosome

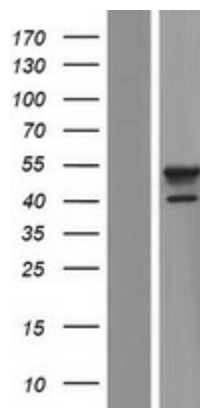
MW: 48.6 kDa

Gene Summary: The protein encoded by this gene is the medium chain of the trans-Golgi network clathrin-associated protein complex AP-1. The other components of this complex are beta-prime-adaptin, gamma-adaptin, and the small chain AP1S1. This complex is located at the Golgi vesicle and links clathrin to receptors in coated vesicles. These vesicles are involved in endocytosis and Golgi processing. Alternatively spliced transcript variants encoding distinct protein isoforms have been found for this gene. [provided by RefSeq, Jul 2008]

Product images:



Circular map for RC202366



Western blot validation of overexpression lysate (Cat# [LY410071]) using anti-DDK antibody (Cat# [TA50011-100]). Left: Cell lysates from untransfected HEK293T cells; Right: Cell lysates from HEK293T cells transfected with RC202366 using transfection reagent MegaTran 2.0 (Cat# [TT210002]).