

## Product datasheet for **RC202365**

### SLUG (SNAI2) (NM\_003068) Human Tagged ORF Clone

#### Product data:

**Product Type:** Expression Plasmids  
**Product Name:** SLUG (SNAI2) (NM\_003068) Human Tagged ORF Clone  
**Tag:** Myc-DDK  
**Symbol:** SLUG  
**Synonyms:** SLUG; SLUGH; SLUGH1; SNAIL2; WS2D  
**Mammalian Cell Selection:** Neomycin  
**Vector:** pCMV6-Entry (PS100001)  
**E. coli Selection:** Kanamycin (25 ug/mL)  
**ORF Nucleotide Sequence:** >RC202365 representing NM\_003068  
 Red=Cloning site Blue=ORF Green=Tags(s)

TTTTGTAATACGACTCACTATAGGGCGCCGGGAATTCGTCGACTGGATCCGGTACCGAGGAGATCTGCC  
 GCC**CGATCGCC**

ATGCCGCGCTCCTTCCTGGTCAAGAAGCATTTCAACGCCTCCAAAAGCCAAACTACAGCGAACTGGACA  
 CACATACAGTGATTATTTCCCGTATCTCTATGAGAGTTACTCCATGCCTGTCATACCACAACCAGAGAT  
 CCTCAGCTCAGGAGCATAACAGCCCCATCACTGTGTGGACTACCGCTGCTCCATTCCACGCCAGCTACCC  
 AATGGCCTCTCTCTCTTTCCGGATACTCCTCATCTTTGGGGCGAGTGAGTCCCCCTCTCCATCTGACA  
 CCTCCTCCAAGGACCACAGTGGCTCAGAAAGCCCCATTAGTGATGAAGAGGAAAGACTACAGTCCAAGCT  
 TTCAGACCCCCATGCCATTGAAGCTGAAAAGTTTCAAGTGAATTTATGCAATAAGACCTATTCAACTTTT  
 TCTGGGCTGGCCAAACATAAGCAGCTGCACTGCCAGTCTAGAAAATCTTTCAGCTGTAATAACT  
 GTGACAAGGAATATGTGAGCCTGGGCGCCCTGAAGATGCATATTCGGACCCACACATTACCTTGTGTTTG  
 CAAGATCTGCGGCAAGGCGTTTTCCAGACCCCTGGTTGCTTCAAGGACACATTAGAACTCACACGGGGGAG  
 AAGCCTTTTTCTTGCCCTCACTGCAACAGAGCATTTGCAGACAGGTCAAATCTGAGGGCTCATCTGCAGA  
 CCCATTCTGATGTAAGAAATACCAGTGCAAAAACCTGCTCCAAAACCTTCTCCAGAATGTCTCTCTGCA  
 CAAACATGAGGAATCTGGCTGCTGTGTAGCACAC

**ACGCGT**ACGCGGCCGCTCGAGCAGAAACTCATCTCAGAAGAGGATCTGGCAGCAAATGATATCCTGGATT  
 ACAAGGATGACGACGATAAGGTTTAA

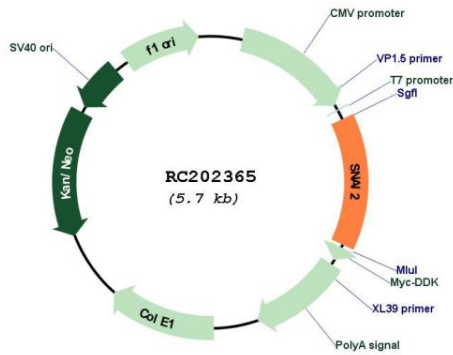


[View online »](#)

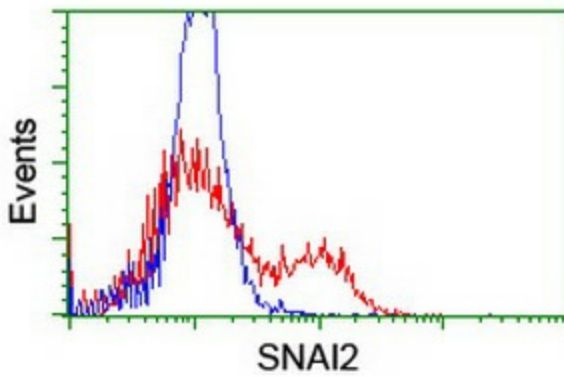


<b>Reconstitution Method:</b>	<ol style="list-style-type: none"><li>1. Centrifuge at 5,000xg for 5min.</li><li>2. Carefully open the tube and add 100ul of sterile water to dissolve the DNA.</li><li>3. Close the tube and incubate for 10 minutes at room temperature.</li><li>4. Briefly vortex the tube and then do a quick spin (less than 5000xg) to concentrate the liquid at the bottom.</li><li>5. Store the suspended plasmid at -20°C. The DNA is stable for at least one year from date of shipping when stored at -20°C.</li></ol>
<b>Note:</b>	Plasmids are not sterile. For experiments where strict sterility is required, filtration with 0.22um filter is required.
<b>RefSeq:</b>	<a href="#">NM_003068.5</a>
<b>RefSeq Size:</b>	2101 bp
<b>RefSeq ORF:</b>	807 bp
<b>Locus ID:</b>	6591
<b>UniProt ID:</b>	<a href="#">O43623</a>
<b>Cytogenetics:</b>	8q11.21
<b>Domains:</b>	zf-C2H2
<b>Protein Families:</b>	Druggable Genome, Transcription Factors
<b>Protein Pathways:</b>	Adherens junction
<b>MW:</b>	29.8 kDa
<b>Gene Summary:</b>	This gene encodes a member of the Snail family of C2H2-type zinc finger transcription factors. The encoded protein acts as a transcriptional repressor that binds to E-box motifs and is also likely to repress E-cadherin transcription in breast carcinoma. This protein is involved in epithelial-mesenchymal transitions and has antiapoptotic activity. Mutations in this gene may be associated with sporadic cases of neural tube defects. [provided by RefSeq, Jul 2008]

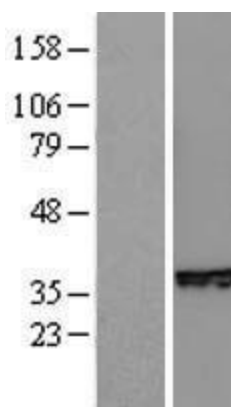
Product images:



Circular map for RC202365



HEK293T cells transfected with either RC202365 overexpress plasmid (Red) or empty vector control plasmid (Blue) were immunostained by anti-SNAI2 antibody ([TA800167]), and then analyzed by flow cytometry.



Western blot validation of overexpression lysate (Cat# [LY401070]) using anti-DDK antibody (Cat# [TA50011-100]). Left: Cell lysates from untransfected HEK293T cells; Right: Cell lysates from HEK293T cells transfected with RC202365 using transfection reagent MegaTran 2.0 (Cat# [TT210002]).