

Product datasheet for RC202363

FOXA3 (NM_004497) Human Tagged ORF Clone

Product data:

| | |
|---------------------------|---|
| Product Type: | Expression Plasmids |
| Product Name: | FOXA3 (NM_004497) Human Tagged ORF Clone |
| Tag: | Myc-DDK |
| Symbol: | FOXA3 |
| Synonyms: | FKHH3; HNF3G; TCF3G |
| Mammalian Cell Selection: | Neomycin |
| Vector: | pCMV6-Entry (PS100001) |
| E. coli Selection: | Kanamycin (25 ug/mL) |
| ORF Nucleotide Sequence: | >RC202363 ORF sequence Red=Cloning site Blue=ORF Green=Tags(s) |

TTTTGTAATACGACTCACTATAGGGCGGCCGGAATTCGTCGACTGGATCCGGTACCGAGGAGATCTGCC
GCC**CGATCGCC**

ATGCTGGGCTCAGTGAAGATGGAGGCCATGACCTGGCCGAGTGGAGCTACTACCCGGAGGCGGGCGAGG
TCTACTCGCCGTGACCCAGTGCCACCATTGGCCCCCTCAACTCCTACATGACCCTGAATCCTCTAAG
CTCTCCCTATCCCCTGGGGGCTCCCTGCCTCCCCTGCCCCTCAGGACCCCTGGCACCCCCAGCACCT
GCAGCCCCCTGGGGCCACTTTCCAGGCCTGGGTGTCAGCGGTGGCAGCAGCAGCTCCGGGTACGGGG
CCCCGGTCTGGCTGGTGCACGGGAAGGAGATGCCGAAGGGTATCGGCGGCCCTGGCACACGCCAA
GCCACCGTATTCTATATCTCACTCATCACCATTGCCATCCAGCAGGCGCCGGGCAAGATGCTGACCTTG
AGTGAAATCTACCACTGGATCATGGACCTTCCCTTACTACCGGAGAATCAGCAGCGCTGGCAGAAT
CCATTCGCCACTCGCTGTCTTTCAACGACTGCTTCGTCAAGGTGGCGCTTCCCAGACAAGCCTGGCAA
GGGCTCTACTGGGCCCTACACCCAGCTCAGGGAACATGTTTGAGAATGGCTGCTACCTGCGCCGCCAG
AAACGTTCAAGCTGGAGGAGAAGGTGAAAAAGGGGGCAGCGGGGCTGCCACCACCACCAGGAACGGGA
CAGGGTCTGCTGCCTCGACCACCACCCCGCGGCCACAGTCACCTCCCCGCCAGCCCCCGCTCCAGC
CCCTGAGCCTGAGGCCAGGGCGGGGAAGATGTGGGGCTCTGGACTGTGGCTCACCCGCTTCTCCACA
CCCTATTCACTGGCCTGGAGCTCCCAGGGGAGCTGAAGCTGGACGCCCTACAACCTCAACACCCCTT
TCTCCATCAACAACCTAATGTGAGAACAGACACCAGCACCTCCAAACTGGACGTGGGGTTTGGGGGCTA
CGGGGCTGAAGGTGGGAGCCTGGAGTCTACTACCAGGGCCTCTATTCCCGCTCTTTGCTTAATGCATCC

ACGCGTACGCGGCCGCTCGAGCAGAACTCATCTCAGAAGAGGATCTGGCAGCAATGATATCCTGGATT
ACAAGGATGACGACGATAAGGTTTAA



[View online »](#)

Protein Sequence: >RC202363 protein sequence
Red=Cloning site Green=Tags(s)

MLGSVKMEAHDLAEWSYYPEAGEVYSPVTPVPTMAPLNSYMTLNPLSSPYPPGGLPASPLPSGGLAPPAP
 AAPLGPTFPGLGVSGSSSSGYGAPGGLVHGKEMPKGYRRPLAHAKPPYSYISLITMAIQAPGKMLTL
 SEIYQWIMDLFPYYRENQQRWQNSIRHLSFNDCFVKVARSPDKPGKGSYVALHPSSGNMFENGCYLRRQ
 KRFKLEEKVKKGGSGAATTTTRNGTGSAASTTTTAAATVTSPPQPPPPAPEPEAQGGEDVGDALDCGSPASST
 PYFTGLELPGELKLDAPYNFNHPFSINNLMSSEQTPAPPKLDVGFGGYGAEGGEGPVYVYQGLYSRSLLNAS

TRTRPLEQKLISEEDLAANDILDYKDDDDKV

Chromatograms: https://cdn.origene.com/chromatograms/mk6133_a05.zip

Restriction Sites: SgfI-MluI

Cloning Scheme:



* The last codon before the Stop codon of the ORF

ACCN: NM_004497

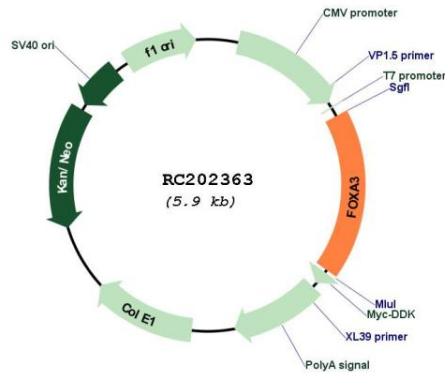
ORF Size: 1050 bp

OTI Disclaimer: Due to the inherent nature of this plasmid, standard methods to replicate additional amounts of DNA in E. coli are highly likely to result in mutations and/or rearrangements. Therefore, OriGene does not guarantee the capability to replicate this plasmid DNA. Additional amounts of DNA can be purchased from OriGene with batch-specific, full-sequence verification at a reduced cost. Please contact our customer care team at custsupport@origene.com or by calling 301.340.3188 option 3 for pricing and delivery.

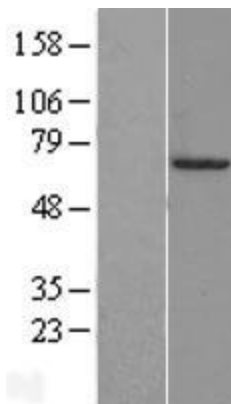
The molecular sequence of this clone aligns with the gene accession number as a point of reference only. However, individual transcript sequences of the same gene can differ through naturally occurring variations (e.g. polymorphisms), each with its own valid existence. This clone is substantially in agreement with the reference, but a complete review of all prevailing variants is recommended prior to use. [More info](#)

| | |
|-------------------------------|---|
| OTI Annotation: | This clone was engineered to express the complete ORF with an expression tag. Expression varies depending on the nature of the gene. |
| Components: | The ORF clone is ion-exchange column purified and shipped in a 2D barcoded Matrix tube containing 10ug of transfection-ready, dried plasmid DNA (reconstitute with 100 ul of water). |
| Reconstitution Method: | <ol style="list-style-type: none">1. Centrifuge at 5,000xg for 5min.2. Carefully open the tube and add 100ul of sterile water to dissolve the DNA.3. Close the tube and incubate for 10 minutes at room temperature.4. Briefly vortex the tube and then do a quick spin (less than 5000xg) to concentrate the liquid at the bottom.5. Store the suspended plasmid at -20°C. The DNA is stable for at least one year from date of shipping when stored at -20°C. |
| RefSeq: | NM_004497.3 |
| RefSeq Size: | 2046 bp |
| RefSeq ORF: | 1053 bp |
| Locus ID: | 3171 |
| UniProt ID: | P55318 |
| Cytogenetics: | 19q13.32 |
| Protein Families: | ES Cell Differentiation/IPS, Transcription Factors |
| Protein Pathways: | Maturity onset diabetes of the young |
| MW: | 37.1 kDa |
| Gene Summary: | This gene encodes a member of the forkhead class of DNA-binding proteins. These hepatocyte nuclear factors are transcriptional activators for liver-specific transcripts such as albumin and transthyretin, and they also interact with chromatin. Similar family members in mice have roles in the regulation of metabolism and in the differentiation of the pancreas and liver. The crystal structure of a similar protein in rat has been resolved. [provided by RefSeq, Jul 2008] |

Product images:



Circular map for RC202363



Western blot validation of overexpression lysate (Cat# [LY401428]) using anti-DDK antibody (Cat# [TA50011-100]). Left: Cell lysates from untransfected HEK293T cells; Right: Cell lysates from HEK293T cells transfected with RC202363 using transfection reagent MegaTran 2.0 (Cat# [TT210002]).