

Product datasheet for **RC202362**

SUZ12 (NM_015355) Human Tagged ORF Clone

Product data:

Product Type:	Expression Plasmids
Product Name:	SUZ12 (NM_015355) Human Tagged ORF Clone
Tag:	Myc-DDK
Symbol:	SUZ12
Synonyms:	CHET9; IMMAS; JJAZ1
Mammalian Cell Selection:	Neomycin
Vector:	pCMV6-Entry (PS100001)
E. coli Selection:	Kanamycin (25 ug/mL)



[View online »](#)

**ORF Nucleotide
Sequence:**

>RC202362 ORF sequence
 Red=Cloning site Blue=ORF Green=Tags(s)

TTTTGTAATACGACTCACTATAGGGCGGCCGGGAATTCGTCGACTGGATCCGGTACCGAGGAGATCTGCC
 GCC**CGCATCGCC**

ATGGCGCCTCAGAAGCACGGCGGTGGGGAGGGGGCGGCTCGGGGCCAGCGCGGGTCCGGGGAGGCG
 GCTTCGGGGTTCGGCGCGGTGGCGGCGGACGGCTTCGGGCGCAAATCCGGCGCGGGAGCTGTGG
 AGGGGGTGGCAGTTACTCGGCCTCCTCCTCCTCCTCCTCGCGGCGGAGCGCGGGGCTGCGGTGTTACCG
 GTGAAGAAGCCGAAAATGGAGCACGTCCAGGCTGACCACGAGCTTTTCTCCAGGCCTTTGAGAAGCCAA
 CACAGATCTATAGATTTCTCGAACTCGGAATCTCATAGCACCAATATTTTTGCACAGAAGCTTACTTTA
 CATGTCTCATCGAACTCCAGAACAACATCAAAAGGAAAACATTTAAAGTTGATGATATGTTATCAAAA
 GTAGAGAAAATGAAAGGAGAGCAAGAATCTCATAGCTTGTGAGCTCATTGCAGCTTACGTTTACTGGTT
 TCTTCCACAAAAATGATAAGCCATCACAACTCAGAAAATGAACAAAATCTGTTACCCGGAAGTCTCT
 GCTTGTGAAAGTTTGGCCAAAAAAGAAAGGATGTAAGTTGTCCAATAAGGCAAGTCCCACAGGTA
 AAGCAGGTGCCTTTGAATCCTGACCTCAATCAACAAAACCCGAAATTTCCCGTCCCTGACGTTTCCA
 GTAATGAATTTGAACCTAGTAACAGCCATATGGTGAAGTCTTACTCGTTGCTATTTAGAGTGACTCGTCC
 AGGAAGAAGAGAGTTTAATGGAATGATTAATGGAGAAACCAATGAAAATATTGATGTCAATGAAGAGCTT
 CCAGCCAGAAGAAAACGAAATCGTGAGGATGGGAAAAGACATTTGTTGCACAAATGACAGTATTTGATA
 AAAACAGGCGCTTACAGCTTTTATAGTGGGAATATGAAGTAGCCATGCAGGAAATGGAAGAATGTCCAAT
 AAGCAAGAAAAGAGCAACATGGGAGACTATTCTTGTGAGGAGAGGCTGCCTCCATTGAAAACATTTTCT
 CAGGGACCTACGTTGCAGTTCACCTTTCGTTGGACAGGAGAGACCAATGATAAATCTACGGTCTCTATTG
 CCAAACCTCTTGCCACTAGAAAATCAGAGAGTCTCCATCAGGAAAACAAGCCTGGTTAGTTAAACCTAC
 TCAAACCTATTGCTGTTAAGAATCATTGACTACAGATCTACAAACAAGAAAAGAAAAGGATACTCCAAT
 GAAAACCGACAAAAATTAAGAATATTTTATCAGTTTCTCTATAACAACAATACAAGGCAACAACTGAAG
 CAAGAGATGACCTGCATTGCCCTTGGTGTACTCTGAACTGCCGAACTTTATAGTTTACTCAAGCATCT
 TAAACTCTGCCATAGCAGATTTATCTTCAACTATGTTTATCATCCAAAAGGTGCTAGGATAGATGTTTCT
 ATCAATGAGTGTATGATGGCTCCTATGCAGGAAATCCTCAGGATATTCATCGCCAACCTGGATTTGCTT
 TTAGTCGCAACGGACCAGTTAAGAGAACACCTATCACACATATTCTTGTGTGCAGGCCAAAACGAACAAA
 AGCAAGCATGTCTGAATTTCTTGAATCTGAAGATGGGGAAGTAGAACAGCAAAGAACATATAGTAGTGGC
 CACAATCGTCTGTATTTCCATAGTGATACCTGCTTACCTCTCCGTCACAAAGAAATGGAAGTAGATAGTG
 AAGATGAAAAGGATCCTGAATGGCTAAGAGAAAAACCATTACACAAATGAAAGATTTTCTGATGTTAA
 TGAAGGAGAGAAAAGTGAAGTGAAGTCTGAAATCTCCATGTCATGAAGCATGGGTTTATTGCTGCAAT
 CAAATGAATCATGCCTGTATGCTGTTTGTAGAAAATTATGGACAGAAAATAATTAAGAAGATTTATGTC
 GAACTTCATGCTTATCTAGTCAGCATGCATGACTTTAATCTTATTAGCATAATGTCAATAGATAAAGC
 TGTTACCAAGCTCCGTGAAATGCAGCAAAAATTAGAAAAGGGGAATCTGCTTCCCTGCAACGAAGAA
 ATAAGTGAAGAACAAAATGGGACAGCAATGGATTTAGTGAATTAAGTCAAAAGAGAAAGCTTTGGAAA
 CAGATAGTGTCTCAGGGGTTTCAAAACAGAGCAAAAACAAAACTC

ACGCGTACGCGGCGCTCGAGCAGAACTCATCTCAGAAGAGGATCTGGCAGCAAATGATATCCTGGATT
 ACAAGGATGACGACGATAGGTTTAA

Protein Sequence: >RC202362 protein sequence
 Red=Cloning site Green=Tags(s)

MAPQKHGGGGGGSGPSAGSGGGGFGGSAVAATAASGGKSGGGSCGGGGSYSSASSSSAAAAAGAAVLP
 VKKPKMEHVQADHELFLQAFEKPTQIYRFLRTRNLIAPIFLHRTLTYMSHRNRTNIKRRKTFKVDDMLSK
 VEKMKGEQESHLSAHLQLTFTGFFHKNDKPSNSENEQNSVTLEVLVVKVCHKKRKDVSCPIRQVPTGK
 KQVPLNPDNLNQT KPGNFPSLAVSSNEFEPNSNSHMVKSYSLLFRVTRPGRREFNGMINGETNENIDVNEEL
 PARRKRNRREDGEKTFVAQMTVFDKNRRLQLLDGEYEVAMQEMEECPI SKKRATWETILDGKRLPPFETFS
 QGPTLQFTLRWTGETNDKSTAPIAKPLATRNSESLHQENKPGSVKPTQTIAVKESLTTDLQTRKEKDTPN
 ENRQKLRIFYQFLYNNNTRQQTEARDDLHCPWCTLNCRKLYSLLKHLKLCRSRIFNYVYHPKGARIDVS
 INECYDGSYAGNPQDIHRQPGFAFSRNGPVKRTPI THILVCRPKRTKASMSEFLESEDEGEVQQRYSYG
 HNRLYFHSDTCLPLRPQEMEVDSEDEKDPWLREKTI TQIEEFSDVNEGEKEVMKLNHVMKHGFIADN
 QMNHACMLFVENYGQKI IKKNLCRNFMLHLVSMHDFNLSIMSIDKAVTKLREMQQKLEKGESASPANEE
 ITEEQNGTANGFSEINSKEKALETDSVSGVSKQSKKQKL

TRTRPLEQKLI SEEDLAANDILDYKDDDDKV

Chromatograms: https://cdn.origene.com/chromatograms/mk6251_b03.zip

Restriction Sites: SgfI-MluI

Cloning Scheme:

Cloning sites used for ORF Shuttling:



* The last codon before the Stop codon of the ORF

ACCN: NM_015355

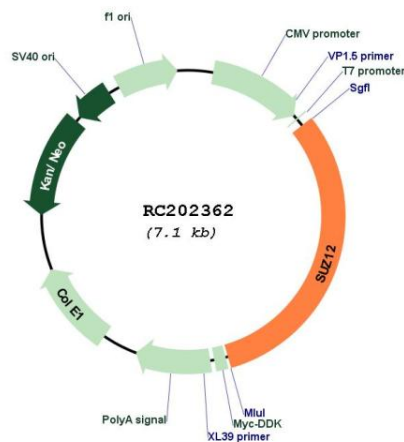
ORF Size: 2217 bp

OTI Disclaimer: The molecular sequence of this clone aligns with the gene accession number as a point of reference only. However, individual transcript sequences of the same gene can differ through naturally occurring variations (e.g. polymorphisms), each with its own valid existence. This clone is substantially in agreement with the reference, but a complete review of all prevailing variants is recommended prior to use. [More info](#)

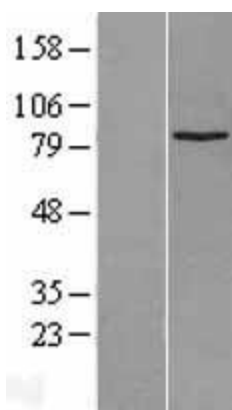
OTI Annotation: This clone was engineered to express the complete ORF with an expression tag. Expression varies depending on the nature of the gene.

Components:	The ORF clone is ion-exchange column purified and shipped in a 2D barcoded Matrix tube containing 10ug of transfection-ready, dried plasmid DNA (reconstitute with 100 ul of water).
Reconstitution Method:	<ol style="list-style-type: none"> 1. Centrifuge at 5,000xg for 5min. 2. Carefully open the tube and add 100ul of sterile water to dissolve the DNA. 3. Close the tube and incubate for 10 minutes at room temperature. 4. Briefly vortex the tube and then do a quick spin (less than 5000xg) to concentrate the liquid at the bottom. 5. Store the suspended plasmid at -20°C. The DNA is stable for at least one year from date of shipping when stored at -20°C.
Note:	Plasmids are not sterile. For experiments where strict sterility is required, filtration with 0.22um filter is required.
RefSeq:	<u>NM_015355.4</u>
RefSeq Size:	4477 bp
RefSeq ORF:	2220 bp
Locus ID:	23512
UniProt ID:	<u>Q15022</u>
Cytogenetics:	17q11.2
Protein Families:	Transcription Factors
MW:	83.1 kDa
Gene Summary:	This zinc finger gene has been identified at the breakpoints of a recurrent chromosomal translocation reported in endometrial stromal sarcoma. Recombination of these breakpoints results in the fusion of this gene and JAZF1. The protein encoded by this gene contains a zinc finger domain in the C terminus of the coding region. [provided by RefSeq, Jul 2009]

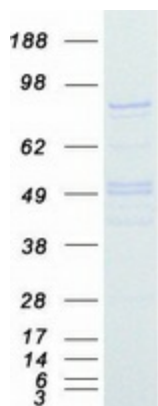
Product images:



Circular map for RC202362



Western blot validation of overexpression lysate (Cat# [LY414615]) using anti-DDK antibody (Cat# [TA50011-100]). Left: Cell lysates from untransfected HEK293T cells; Right: Cell lysates from HEK293T cells transfected with RC202362 using transfection reagent MegaTran 2.0 (Cat# [TT210002]).



Coomassie blue staining of purified SUZ12 protein (Cat# [TP302362]). The protein was produced from HEK293T cells transfected with SUZ12 cDNA clone (Cat# RC202362) using MegaTran 2.0 (Cat# [TT210002]).