

## Product datasheet for RC202361

### SLBP (NM\_006527) Human Tagged ORF Clone

#### Product data:

Product Type:	Expression Plasmids
Product Name:	SLBP (NM_006527) Human Tagged ORF Clone
Tag:	Myc-DDK
Symbol:	SLBP
Synonyms:	HBP
Mammalian Cell Selection:	Neomycin
Vector:	pCMV6-Entry (PS100001)
E. coli Selection:	Kanamycin (25 ug/mL)
ORF Nucleotide Sequence:	>RC202361 ORF sequence Red=Cloning site Blue=ORF Green=Tags(s)

TTTGTAAATACGACTCACTATAGGGCGGCCGGAATTCGTCGACTGGATCCGGTACCGAGGAGATCTGCC  
 GCCCGCATCGCC

ATGGCCTGCCGCCGCGAAGCCCGCGAGGCATCAGAGCCGCTGCGACGGTGACGCCAGCCCGCCGTCCC  
 CCGCGCGATGGAGCCTGGGACGGAAGCGCAGAGCCGACGGCAGGCGCTGGAGGCCGAAGACGCCGAGGA  
 GGCAGAGCACC CGCGGCCGAGCGCAGACCCGAGAGCTTTACCACTCCTGAAGGCCCTAAACCCCGTTCC  
 AGATGCTCTGACTGGCAAGTGCAGTTGAAGAAGATGAAATGAGGACCAGAGTTAACAAAGAAATGGCAA  
 GATATAAAGGAACTCCTCATCAATGACTTTGGAAGAGAGAGAAAATCATCATCAGGAAGTTCTGATTC  
 AAAGGAGTCTATGTCTACTGTGCCGGCTGACTTTGAGACAGATGAAAGTGCCTAATGAGGAGACAGAAG  
 CAGATCAACTATGGGAAGAACAATTCCTACGATCGTTATATTAAGAAGTCCCAAGACACCTTCGAC  
 AACCTGGCATTTCATCCCAAGACCCCTAATAAATTTAAGAAGTATAGTCGACGTTTCATGGGACCAGCAAT  
 CAACTCTGGAAGGTGGCTCTGCATTTTGGGATCCTCCAGCGGAAGAAGGATGTGATTTGCAAGAAATA  
 CACCCTGTAGACCTTGAATCTGCAGAAAGCAGCTCCGAGCCCCAGACCAGCTCTCAGGATGACTTTGATG  
 TGTACTCTGGCACACCCACCAAGGTGAGACACATGGACAGTCAAGTGGAGGATGAGTTTGATTTGGAAGC  
 TTGTTTAACTGAACCCTTGAGAGACTTCTCAGCCATGAGC

ACGCGTACGCGGCCGCTCGAGCAGAACTCATCTCAGAAGAGGATCTGGCAGCAATGATATCCTGGATT  
 ACAAGGATGACGACGATAAGGTTTAA


[View online »](#)

**Protein Sequence:** >RC202361 protein sequence  
 Red=Cloning site Green=Tags(s)

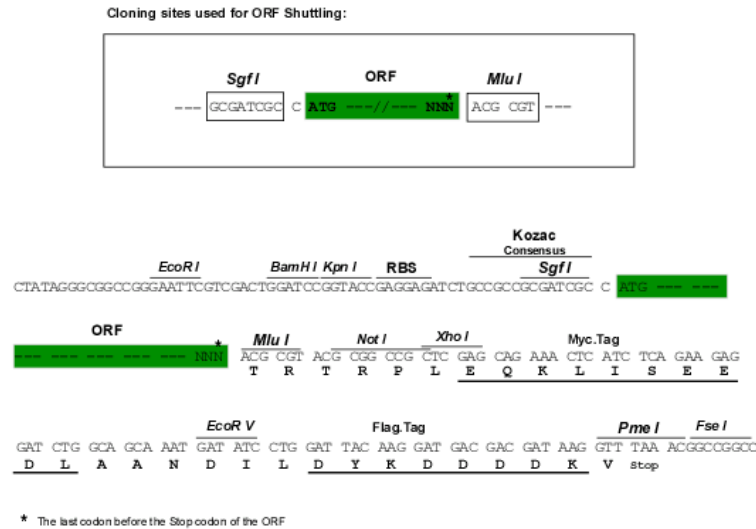
MACRPRSPPRHQSRCDGDASPPSPARWSLGRKRRADGRWRPEDAEAEHARGAERRPESFTTPEGPKPRS  
 RCSDWASAVEEDEMTRVKNEMARYKRLKLLINDFGRERKSSSGSSDSKESMSTVPADFETDESVMRRQK  
 QINYGKNTIAYDRIYKEVPRHLRQPGIHPKTPNKFKKYSRRSWDQQIKLWKVALHFWDPPEEGCDLQEI  
 HPVDLESAESSSEPQTSSQDDFDVYSGTPTKVRHMDSQVEDEFDLEACLTEPLRDFSAMS

TRTRPLEQKLISEEDLAANDILDYKDDDDKV

**Chromatograms:** [https://cdn.origene.com/chromatograms/mk6003\\_e09.zip](https://cdn.origene.com/chromatograms/mk6003_e09.zip)

**Restriction Sites:** SgfI-MluI

**Cloning Scheme:**



**ACCN:** NM\_006527

**ORF Size:** 810 bp

**OTI Disclaimer:** The molecular sequence of this clone aligns with the gene accession number as a point of reference only. However, individual transcript sequences of the same gene can differ through naturally occurring variations (e.g. polymorphisms), each with its own valid existence. This clone is substantially in agreement with the reference, but a complete review of all prevailing variants is recommended prior to use. [More info](#)

**OTI Annotation:** This clone was engineered to express the complete ORF with an expression tag. Expression varies depending on the nature of the gene.

**Components:** The ORF clone is ion-exchange column purified and shipped in a 2D barcoded Matrix tube containing 10ug of transfection-ready, dried plasmid DNA (reconstitute with 100 ul of water).

**Reconstitution Method:**

1. Centrifuge at 5,000xg for 5min.
2. Carefully open the tube and add 100ul of sterile water to dissolve the DNA.
3. Close the tube and incubate for 10 minutes at room temperature.
4. Briefly vortex the tube and then do a quick spin (less than 5000xg) to concentrate the liquid at the bottom.
5. Store the suspended plasmid at -20°C. The DNA is stable for at least one year from date of shipping when stored at -20°C.

**Note:** Plasmids are not sterile. For experiments where strict sterility is required, filtration with 0.22um filter is required.

**RefSeq:** [NM\\_006527.4](#)

**RefSeq Size:** 1743 bp

**RefSeq ORF:** 813 bp

**Locus ID:** 7884

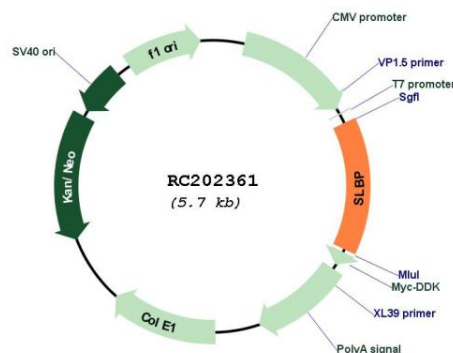
**UniProt ID:** [Q14493](#)

**Cytogenetics:** 4p16.3

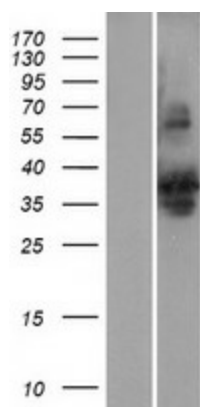
**MW:** 31.3 kDa

**Gene Summary:** This gene encodes a protein that binds to the stem-loop structure in replication-dependent histone mRNAs. Histone mRNAs do not contain introns or polyadenylation signals, and are processed by endonucleolytic cleavage. The stem-loop structure is essential for efficient processing but this structure also controls the transport, translation and stability of histone mRNAs. Expression of the protein is regulated during the cell cycle, increasing more than 10-fold during the latter part of G1. [provided by RefSeq, Jul 2008]

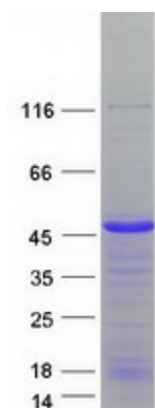
## Product images:



Circular map for RC202361



Western blot validation of overexpression lysate (Cat# [LY401962]) using anti-DDK antibody (Cat# [TA50011-100]). Left: Cell lysates from untransfected HEK293T cells; Right: Cell lysates from HEK293T cells transfected with RC202361 using transfection reagent MegaTran 2.0 (Cat# [TT210002]).



Coomassie blue staining of purified SLBP protein (Cat# [TP302361]). The protein was produced from HEK293T cells transfected with SLBP cDNA clone (Cat# RC202361) using MegaTran 2.0 (Cat# [TT210002]).