

## Product datasheet for RC202358

### TMEM44 (NM\_001011655) Human Tagged ORF Clone

#### Product data:

Product Type:	Expression Plasmids
Product Name:	TMEM44 (NM_001011655) Human Tagged ORF Clone
Tag:	Myc-DDK
Symbol:	TMEM44
Mammalian Cell Selection:	Neomycin
Vector:	pCMV6-Entry (PS100001)
E. coli Selection:	Kanamycin (25 ug/mL)
ORF Nucleotide Sequence:	>RC202358 ORF sequence Red=Cloning site Blue=ORF Green=Tags(s)

TTTTGTAATACGACTCACTATAGGGCGGCCGGGAATTCGTCGACTGGATCCGGTACCGAGGAGATCTGCCGCC**CGATCGCC**

ATGGGGGAGGGCGCCAGCCCCGCGCCCGCTCTGGGACTGGGACTACCTGGACCGCTGCTTCGCCCCGAACCGCTGTCATCTCCTTCGGCCTGTGGATCTGCGCCTCCTCTGTGGATCGCCGCCACGCGCTGCTCTCTATCTGAGATGTGCACAGAAACCCAGACAGGACCAGTCGGCACTGTGTGCTGCATGCTGCCTCCTACCAGTCTGTGTGACACCGTCGGGGCTCTCTGGCCAGACAGCTACAATCCAGGTTTTCACTGGTGCCTACCTAGCAGTATTGACTTAGTGAACCTTATGTTCACTCTTCCCAGTCTGTGGATCCAAATTCAGTCTAATTCAGATCGGAAGCCCGAGAGAGGAAGAGGAGGCGGCAGCTCAGGGCCAGTGTGTTTGCCCTGGCCCTGCCGCTGAGCCTGGGCCGCTGCTGGGCTCTGTGGGTTGCTGTCCCGAAGGCTTCAGCCACCATCCGGGGCCACAGCGGAGGCTGCTAGCGAGCCTGCTGCAGGAAAATACTGAGATCCTCGGCTACCTGCTGGGTAGCGTTGCTGCCTTTGGCTCCTGGGCTTCTCGGATCCCCCTCTCTCCAGAATTTGCCGGGGGAAGACATTTCCCTCCATCCACCTGTGGACCCGGCTCCTGTGCGCCCTGGCTGGCCTCCTCTATGCCTCGGCCATTGTGCCACGACCGGCACCCTGAGTACCTGCTGCGGGCCACACCCTGGTTCTGACCTCCCTCGGCCGTGCGGCCTACTGGACCTCGTATTTTTCTTTTCGTGTGATGAAGAGCAAGATGAGACAGGCCTTAGGATTTGCCAAGGAAGCCAGAGAGCCCTGACACCAAGCCCTTTTGACCTGTGCAGAGAAAGAGGAAGAAAACCAGGAGAATTTGGATTGGGTGCCTCTCACCACACTGTCACACTGCAAGTCACTGAGGACAATGACAGCAATCAGTCGCTACATGGAGCTGACCATCGAGCCTGTGCAGCAGGCTGCAGTGCCACCAGGCTGCCAGGTGACGGGGCAGACGAGCGCCGGAGATGCGTCCCTGCAGGACCCCCGTCGTACCTCCCGTTACAGTGCATCCGGGCCCGGGTGTCTTCCGGCAGCTCCTCTGAGGTCTCCTCCATCAACTCCGACCTGGAGTGGGACCCTGAAGATG

**ACGCGT**ACGCGGCCGCTCGAGCAGAACTCATCTCAGAAGAGGATCTGGCAGCAAATGATATCCTGGATTACAAGGATGACGACGATAAGGTTTAA



[View online »](#)

**Protein Sequence:** >RC202358 protein sequence  
 Red=Cloning site Green=Tags(s)

MGEAPSPAPALWDWDYLDRFCFARNRVCISFGLWICASSCWIAAHALLLYLRCAQKPRQDQSALCAACCLL  
 TSLCDTVGALLARQLTIQVFTGAYLAAIDL VNFMFILFPVCGSKFKSNSDREARERKRRRQLRASVFALA  
 LPLSLGPCWALWVAVPKASATIRGPQRRLLASLLQENTEILGYLLGSVAAFGSWASRIPLSRICRGKTF  
 PSIHLWTRLLSALAGLLYASAIVAHDRHPEYLLRATPWFLTSLGRAALDLAIIFLSCVMKSKMRQALGFA  
 KEARESPTQALLTCAEKEEENQENLDWVPLTTL SHCKSLRTMTAISRYMELTIEPVQQAAYPPGCQVTG  
 RRAPEMRPCRTPRRTL PFRSSGPGCLPAAPLRSPSTPTWSGTLKM

TRTRPLEQKLISEEDLAANDILDYKDDDDKV

**Chromatograms:** [https://cdn.origene.com/chromatograms/mk6671\\_e06.zip](https://cdn.origene.com/chromatograms/mk6671_e06.zip)

**Restriction Sites:** SgfI-MluI

**Cloning Scheme:**

Cloning sites used for ORF Shuttling:



\* The last codon before the Stop codon of the ORF

**ACCN:** NM\_001011655

**ORF Size:** 1188 bp

**OTI Disclaimer:** The molecular sequence of this clone aligns with the gene accession number as a point of reference only. However, individual transcript sequences of the same gene can differ through naturally occurring variations (e.g. polymorphisms), each with its own valid existence. This clone is substantially in agreement with the reference, but a complete review of all prevailing variants is recommended prior to use. [More info](#)

**OTI Annotation:** This clone was engineered to express the complete ORF with an expression tag. Expression varies depending on the nature of the gene.

**Components:** The ORF clone is ion-exchange column purified and shipped in a 2D barcoded Matrix tube containing 10ug of transfection-ready, dried plasmid DNA (reconstitute with 100 ul of water).

**Reconstitution Method:**

1. Centrifuge at 5,000xg for 5min.
2. Carefully open the tube and add 100ul of sterile water to dissolve the DNA.
3. Close the tube and incubate for 10 minutes at room temperature.
4. Briefly vortex the tube and then do a quick spin (less than 5000xg) to concentrate the liquid at the bottom.
5. Store the suspended plasmid at -20°C. The DNA is stable for at least one year from date of shipping when stored at -20°C.

**RefSeq Size:** 2362 bp

**RefSeq ORF:** 1287 bp

**Locus ID:** 93109

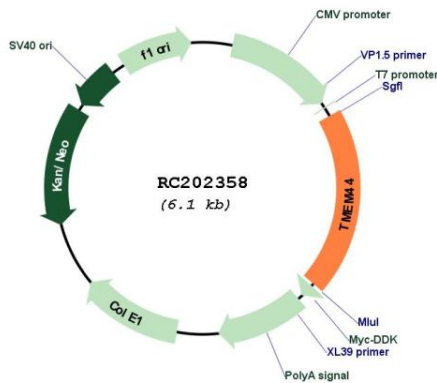
**UniProt ID:** [Q2T9K0](#)

**Cytogenetics:** 3q29

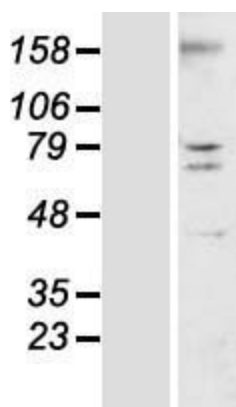
**Protein Families:** Transmembrane

**MW:** 43.8 kDa

**Product images:**



Circular map for RC202358



Western blot validation of overexpression lysate (Cat# [LY423283]) using anti-DDK antibody (Cat# [TA50011-100]). Left: Cell lysates from untransfected HEK293T cells; Right: Cell lysates from HEK293T cells transfected with RC202358 using transfection reagent MegaTran 2.0 (Cat# [TT210002]).