

Product datasheet for **RC202351**

BLOC1S2 (NM_001001342) Human Tagged ORF Clone

Product data:

Product Type: Expression Plasmids
Product Name: BLOC1S2 (NM_001001342) Human Tagged ORF Clone
Tag: Myc-DDK
Symbol: BLOC1S2
Synonyms: BLOS2; BORCS2; CEAP; CEAP11
Mammalian Cell Selection: Neomycin
Vector: pCMV6-Entry (PS100001)
E. coli Selection: Kanamycin (25 ug/mL)
ORF Nucleotide Sequence: >RC202351 ORF sequence
Red=Cloning site Blue=ORF Green=Tags(s)

TTTTGTAATACGACTCACTATAGGGCGGCCGGAATTCGTCGACTGGATCCGGTACCGAGGAGATCTGCC
GCC**CGGATCGCC**

ATGTTCTCCAAAATGGCCACTTACCTGACTGGGAACTGACGGCCACCAGTGAAGACTATAAGCTCCTGG
AAAATATGAATAAACTCACCAGCTTGAAGTATCTTAAAATGAAAGATATTGCTATAAACATTAGTAGGAA
CTTAAAGGACTTAAACCAGAAAATATGCTGGACTGCAGCCTTATCTGGATCAGATCAATGTCATTGAAGAG
CAGGTAGCAGCTCTTGGCAGGCAGCTTACAAGTTGGATGCATATTCAAAAAACTGGAAGCCAAGTACA
AGAAGCTGGAGAAGCGA

ACGCGTACGCGGCCGCTCGAGCAGAAACTCATCTCAGAAGAGGATCTGGCAGCAAATGATATCCTGGATT
ACAAGGATGACGACGATAAGGTTTAA

Protein Sequence: >RC202351 protein sequence
Red=Cloning site Green=Tags(s)
MFSKMATYLTGELTATSEDYKLLNMNKLTSLKYLEMKDIAINISRNLDLNQKYAGLQPYLDQINVIEE
QVAALEQAAYKLDAYSKKLEAKYKLEKR

TRTRPLEQKLISEEDLAANDILDYKDDDDKV

Chromatograms: https://cdn.origene.com/chromatograms/mk6308_a06.zip

Restriction Sites: SgfI-MluI



[View online »](#)

Cloning Scheme:


ACCN: NM_001001342

ORF Size: 297 bp

OTI Disclaimer: The molecular sequence of this clone aligns with the gene accession number as a point of reference only. However, individual transcript sequences of the same gene can differ through naturally occurring variations (e.g. polymorphisms), each with its own valid existence. This clone is substantially in agreement with the reference, but a complete review of all prevailing variants is recommended prior to use. [More info](#)

OTI Annotation: This clone was engineered to express the complete ORF with an expression tag. Expression varies depending on the nature of the gene.

Components: The ORF clone is ion-exchange column purified and shipped in a 2D barcoded Matrix tube containing 10ug of transfection-ready, dried plasmid DNA (reconstitute with 100 ul of water).

- Reconstitution Method:**
1. Centrifuge at 5,000xg for 5min.
 2. Carefully open the tube and add 100ul of sterile water to dissolve the DNA.
 3. Close the tube and incubate for 10 minutes at room temperature.
 4. Briefly vortex the tube and then do a quick spin (less than 5000xg) to concentrate the liquid at the bottom.
 5. Store the suspended plasmid at -20°C. The DNA is stable for at least one year from date of shipping when stored at -20°C.

RefSeq: [NM_001001342.2](#)

RefSeq Size: 2722 bp

RefSeq ORF: 300 bp

Locus ID: 282991

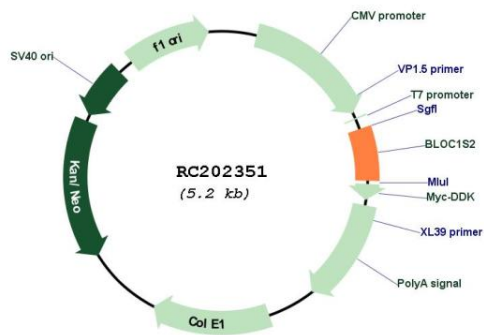
UniProt ID: [Q6QNY1](#)

Cytogenetics: 10q24.31

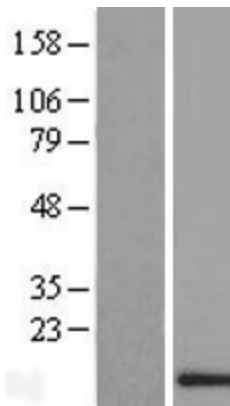
MW: 11.5 kDa

Gene Summary: This gene encodes a protein with multiple functions. The encoded protein has been found in association with the centrosome, shown to co-localize with gamma-tubulin, and also found to be one of the proteins in the BLOC-1 complex which functions in the formation of lysosome-related organelles. A pseudogene of this gene is located on the X chromosome. Alternative splicing results in multiple transcript variants. [provided by RefSeq, Feb 2012]

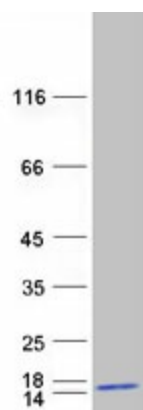
Product images:



Circular map for RC202351



Western blot validation of overexpression lysate (Cat# [LY424327]) using anti-DDK antibody (Cat# [TA50011-100]). Left: Cell lysates from untransfected HEK293T cells; Right: Cell lysates from HEK293T cells transfected with RC202351 using transfection reagent MegaTran 2.0 (Cat# [TT210002]).



Coomassie blue staining of purified BLOC1S2 protein (Cat# [TP302351]). The protein was produced from HEK293T cells transfected with BLOC1S2 cDNA clone (Cat# RC202351) using MegaTran 2.0 (Cat# [TT210002]).