

Product datasheet for **RC202349**

QIL1 (C19orf70) (NM_205767) Human Tagged ORF Clone

Product data:

Product Type: Expression Plasmids
Product Name: QIL1 (C19orf70) (NM_205767) Human Tagged ORF Clone
Tag: Myc-DDK
Symbol: QIL1
Synonyms: C19orf70; MIC13; P117; QIL1
Mammalian Cell Selection: Neomycin
Vector: pCMV6-Entry (PS100001)
E. coli Selection: Kanamycin (25 ug/mL)
ORF Nucleotide Sequence: >RC202349 ORF sequence
Red=Cloning site Blue=ORF Green=Tags(s)

TTTTGTAATACGACTCACTATAGGGCGGCCGGAATTCGTCGACTGGATCCGGTACCGAGGAGATCTGCC
GCC**CGATCGCC**

ATGGTGGCCCGGTGTGGTCGCTGATGAGGTTCTCATCAAGGGAAGTGTGGCTGGGGCGCCGTCTACC
TGGTGTACGACCAGGAGCTGCTGGGGCCAGCGACAAGAGCCAGGCAGCCCTACAGAAGGCTGGGGAGGT
GGTCCCCCGCCATGTACCAGTTCAGCCAGTACGTGTGTGTCAGCAGACAGGCCTGCAGATACCCAGCTC
CCAGCCCTCAAAGATTTACTTTCCATCCGTGACTCCTGGAATGCAGGCATCATGACGGTGATGTCAG
CTCTGTGGTGGCCCCCTCAAGGCCGCGAGTACTCCAAGGAGGCTGGGAGTATGTGAAGCGCGCAC
CAAG

ACGCGTACGCGGCCGCTCGAGCAGAACTCATCTCAGAAGAGGATCTGGCAGCAAATGATATCCTGGATT
ACAAGGATGACGACGATAAGGTTTAA

Protein Sequence: >RC202349 protein sequence
Red=Cloning site Green=Tags(s)

MVARVWSLMRFLIKGSVAGGAVYLVYDQELLGPSDKSQAALQKAGEVVPAMYQFSQYVCQQTGLQIPQL
PAPPKIYFPIRD SWNAGIMTVMSALSVAPSKAREYSKEGWEYVKARTK

TRTRPLEQKLISEEDLAANDILDYKDDDDKV

Chromatograms: https://cdn.origene.com/chromatograms/mk6359_h12.zip

Restriction Sites: SgfI-MluI



[View online »](#)

Cloning Scheme:


ACCN: NM_205767

ORF Size: 354 bp

OTI Disclaimer: The molecular sequence of this clone aligns with the gene accession number as a point of reference only. However, individual transcript sequences of the same gene can differ through naturally occurring variations (e.g. polymorphisms), each with its own valid existence. This clone is substantially in agreement with the reference, but a complete review of all prevailing variants is recommended prior to use. [More info](#)

OTI Annotation: This clone was engineered to express the complete ORF with an expression tag. Expression varies depending on the nature of the gene.

Components: The ORF clone is ion-exchange column purified and shipped in a 2D barcoded Matrix tube containing 10ug of transfection-ready, dried plasmid DNA (reconstitute with 100 ul of water).

- Reconstitution Method:**
1. Centrifuge at 5,000xg for 5min.
 2. Carefully open the tube and add 100ul of sterile water to dissolve the DNA.
 3. Close the tube and incubate for 10 minutes at room temperature.
 4. Briefly vortex the tube and then do a quick spin (less than 5000xg) to concentrate the liquid at the bottom.
 5. Store the suspended plasmid at -20°C. The DNA is stable for at least one year from date of shipping when stored at -20°C.

RefSeq: [NM_205767.3](#)

RefSeq Size: 943 bp

RefSeq ORF: 357 bp

Locus ID: 125988

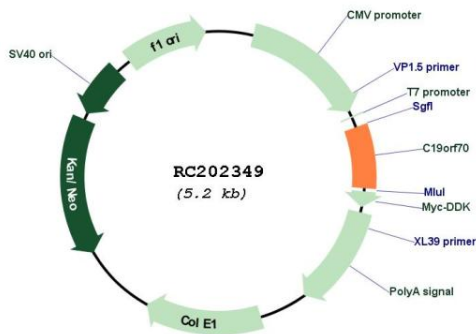
UniProt ID: [Q5XKP0](#)

Cytogenetics: 19p13.3

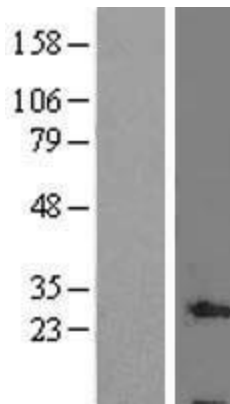
MW: 13.1 kDa

Gene Summary: Component of the MICOS complex, a large protein complex of the mitochondrial inner membrane that plays crucial roles in the maintenance of crista junctions, inner membrane architecture, and formation of contact sites to the outer membrane. Constituent of mature MICOS complex, it is required for the formation of cristae junction (CJ) and maintenance of cristae morphology. Required for the incorporation of MICOS10/MIC10 into the MICOS complex.[UniProtKB/Swiss-Prot Function]

Product images:



Circular map for RC202349



Western blot validation of overexpression lysate (Cat# [LY404257]) using anti-DDK antibody (Cat# [TA50011-100]). Left: Cell lysates from untransfected HEK293T cells; Right: Cell lysates from HEK293T cells transfected with RC202349 using transfection reagent MegaTran 2.0 (Cat# [TT210002]).