

Product datasheet for RC202348

CANT1 (NM_138793) Human Tagged ORF Clone

Product data:

Product Type:	Expression Plasmids
Product Name:	CANT1 (NM_138793) Human Tagged ORF Clone
Tag:	Myc-DDK
Symbol:	CANT1
Synonyms:	DBQD; DBQD1; EDM7; SCAN-1; SCAN1; SHAPY
Mammalian Cell Selection:	Neomycin
Vector:	pCMV6-Entry (PS100001)
E. coli Selection:	Kanamycin (25 ug/mL)
ORF Nucleotide Sequence:	>RC202348 ORF sequence Red=Cloning site Blue=ORF Green=Tags(s)

TTTTGTAATACGACTCACTATAGGGCGGCCGGAATTCGTCGACTGGATCCGGTACCGAGGAGATCTGCC
GCC**CGATCGCC**

ATGCCCGTGCAGCTGTCTGAGCACCCGGAATGGAATGAGTCTATGCACTCCCTCCGGATCAGTGTGGGG
GCCTTCTGTGCTGGCGTCCATGACCAAGGCCGCGGACCCCGCTTCCGCCCCCGCTGGAAGGTGATCCT
GACGTTCTTTGTGGGTGCTGCCATCCTCTGGCTGCTGCTCCCACCGCCGGCCCCGGCAGGCCCCCC
ACCCACAATGCACAACTGGAGGCTCGGCCAGGCGCCGCAACTGGTACAATGACACCTACCCCTGT
CTCCCCACAAAGGACACCGGCTGGGATTCGGTATCGAATCGCAGTTATCGCAGACCTGGACACAGAGTC
AAGGGCCCAAGAGGAAAACACCTGGTTCAGTTACCTGAAAAGGGCTACCTGACCCTGTCAGACAGTGGG
GACAAGGTGGCCGTGGAATGGGACAAAGACCATGGGGTCTGGAGTCCCACCTGGCGGAGAAGGGGAGAG
GCATGGAGCTATCCGACCTGATTGTTTTCAATGGGAACTCTACTCCGTGGATGACCGGACGGGGTTCGT
CTACCAGATCGAAGGCAGCAAAGCCGTGCCCTGGGTGATTCTGTCCGACGGCGACGGCACCCTGGAGAAA
GGCTTCAAGGCCGAATGGCTGGCAGTGAAGGACGAGCGTCTGTACGTGGGCGCCTGGGCAAGGAGTGGA
CGACCACTACGGGTGATGTGGTGAACGAGAACCCGGAGTGGGTGAAGGTGGTGGCTACAAGGCACGCT
GGACCACGAGAAGTGGGTGTCCTCAACTACAACGCCCTGCGGGCTGCTGCCGGCATCCAGCCGCCAGGCTAC
CTCATCCATGAGTCTGCCTGCTGGAGTGACAGCGTGCAGCGCTGGTTCTTCTGCCGCGCCGCCAGCC
AGGAGCGCTACAGCGAGAAGGACGACGAGCGCAAGGGCGCAACCTGCTGCTGAGCGCTCCCTGACTT
CGGCGACATCGCTGTGAGCCACGTCGGGGCGGTGGTCCCCACTCACGGCTTCTCGTCTTCAAGTTCATC
CCCAACACCGACGACCAGATCATTGTGGCCCTCAAATCCGAGGAGGACAGCGGCAGAGTCGCTCTTACA
TCATGGCCTTACGCTGGACGGCGCTTCTGTTGCCGGAGACCAAGATCGGAAGCGTGAATACGAAGG
CATCGAGTTCATT

ACGCGTACGCGGCCGCTCGAGCAGAACTCATCTCAGAAGAGGATCTGGCAGCAAATGATATCCTGGATT
ACAAGGATGACGACGATAAGGTTTAA



[View online »](#)

Protein Sequence: >RC202348 protein sequence
Red=Cloning site Green=Tags(s)

MPVQLSEHPEWNESMHLRISVGGLPVLASMTKAADPRFRPRWKVILTFVGAAILWLLCSHRPAPGRPP
 THNAHNWRLGQAPANWYNDTYPLSPPQRTPAGIRYRIAVIADLDTESRAQEENTWFSYLKKGYLTLSDSG
 DKVAVEWDKDHGVLESHLAEKGRGMELSDLIVFNGKLYSVDDRTGVVYQIEGSKAVPWVILSDGDGTVEK
 GKFAEWLAVKDERLYVGGLGKEWTTTTGDVVNENPEWVKVVGKGSVDHENWVSNYNALRAAGIQPPGY
 LIHESACWSDTLQRWFFLPRRASQERYSEKDDERKGANLLL SASPDFGDI AVSHVGAVVPTHGFSSFKFI
 PNTDDQIIIVALKSEEDSGRVASYIMAFITLDGRFLLPETKIGSVKYEIEFI

TRTRPLEQKLISEEDLAANDILDYKDDDDKV

Chromatograms: https://cdn.origene.com/chromatograms/mk6308_f03.zip

Restriction Sites: SgfI-MluI

Cloning Scheme:



* The last codon before the Stop codon of the ORF

ACCN: NM_138793

ORF Size: 1203 bp

OTI Disclaimer: The molecular sequence of this clone aligns with the gene accession number as a point of reference only. However, individual transcript sequences of the same gene can differ through naturally occurring variations (e.g. polymorphisms), each with its own valid existence. This clone is substantially in agreement with the reference, but a complete review of all prevailing variants is recommended prior to use. [More info](#)

OTI Annotation: This clone was engineered to express the complete ORF with an expression tag. Expression varies depending on the nature of the gene.

Components: The ORF clone is ion-exchange column purified and shipped in a 2D barcoded Matrix tube containing 10ug of transfection-ready, dried plasmid DNA (reconstitute with 100 ul of water).

Reconstitution Method:

1. Centrifuge at 5,000xg for 5min.
2. Carefully open the tube and add 100ul of sterile water to dissolve the DNA.
3. Close the tube and incubate for 10 minutes at room temperature.
4. Briefly vortex the tube and then do a quick spin (less than 5000xg) to concentrate the liquid at the bottom.
5. Store the suspended plasmid at -20°C. The DNA is stable for at least one year from date of shipping when stored at -20°C.

RefSeq: [NM_138793.4](#)

RefSeq Size: 3545 bp

RefSeq ORF: 1206 bp

Locus ID: 124583

UniProt ID: [Q8WVQ1](#)

Cytogenetics: 17q25.3

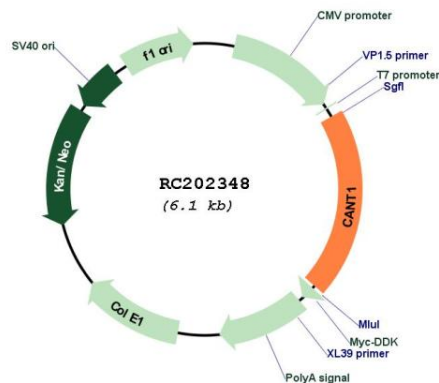
Protein Families: Secreted Protein

Protein Pathways: Purine metabolism, Pyrimidine metabolism

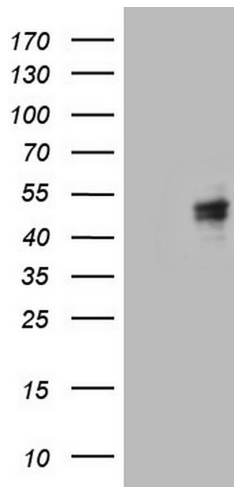
MW: 44.8 kDa

Gene Summary: This protein encoded by this gene belongs to the apyrase family. It functions as a calcium-dependent nucleotidase with a preference for UDP. Mutations in this gene are associated with Desbuquois dysplasia with hand anomalies. Alternatively spliced transcript variants have been noted for this gene.[provided by RefSeq, Mar 2010]

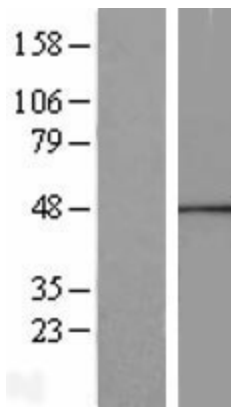
Product images:



Circular map for RC202348



HEK293T cells were transfected with the pCMV6-ENTRY control (Cat# [PS100001], Left lane) or pCMV6-ENTRY CANT1 (Cat# RC202348, Right lane) cDNA for 48 hrs and lysed. Equivalent amounts of cell lysates (5 ug per lane) were separated by SDS-PAGE and immunoblotted with anti-CANT1 (Cat# [TA805629]). Positive lysates [LY408394] (100ug) and [LC408394] (20ug) can be purchased separately from OriGene.



Western blot validation of overexpression lysate (Cat# [LY431907]) using anti-DDK antibody (Cat# [TA50011-100]). Left: Cell lysates from untransfected HEK293T cells; Right: Cell lysates from HEK293T cells transfected with [RC228879] using transfection reagent MegaTran 2.0 (Cat# [TT210002]).