

## Product datasheet for RC202346

### LYRM4 (NM\_020408) Human Tagged ORF Clone

#### Product data:

**Product Type:** Expression Plasmids  
**Product Name:** LYRM4 (NM\_020408) Human Tagged ORF Clone  
**Tag:** Myc-DDK  
**Symbol:** LYRM4  
**Synonyms:** C6orf149; CGI-203; COXPD19; ISD11  
**Mammalian Cell Selection:** Neomycin  
**Vector:** pCMV6-Entry (PS100001)  
**E. coli Selection:** Kanamycin (25 ug/mL)  
**ORF Nucleotide Sequence:** >RC202346 ORF sequence  
 Red=Cloning site Blue=ORF Green=Tags(s)

TTTGTAAATACGACTCACTATAGGGCGGCCGGAATTCGTCGACTGGATCCGGTACCGAGGAGATCTGCC  
 GCCCGCATCGCC

ATGGCAGCCTCCAGTCGCGCACAAAGTGTTAGCTCTGTACCGGGCGATGCTGAGAGAGAGCAAGCGTTTCA  
 GCGCCTACAATTACAGAACATATGCTGTCAGGAGGATAAGAGATGCCTTCAGAGAAAATAAAATGTAAA  
 GGATCCTGTAGAAATTCAAACCTAGTGAATAAGCCAAGAGAGACCTTGGAGTAATTCGTCGACAGGTC  
 CACATTGGCCAAGTATTCAACTGACAAGCTGATCATTGAGAATCGAGACATGCCAGGACC

ACGCGTACGCGGCCGCTCGAGCAGAACTCATCTCAGAAGAGGATCTGGCAGCAAATGATATCCTGGATT  
 ACAAGGATGACGACGATAAGGTTTAA

**Protein Sequence:** >RC202346 protein sequence  
 Red=Cloning site Green=Tags(s)  
 MAASSRAQVLALYRAMLRRESKRFSAYNYRTYAVRRIRDAFRENKNVKDPVEIQTLVNAKRD LGVIRRVQV  
 HIGQLYSTDKLIIENRDMPT

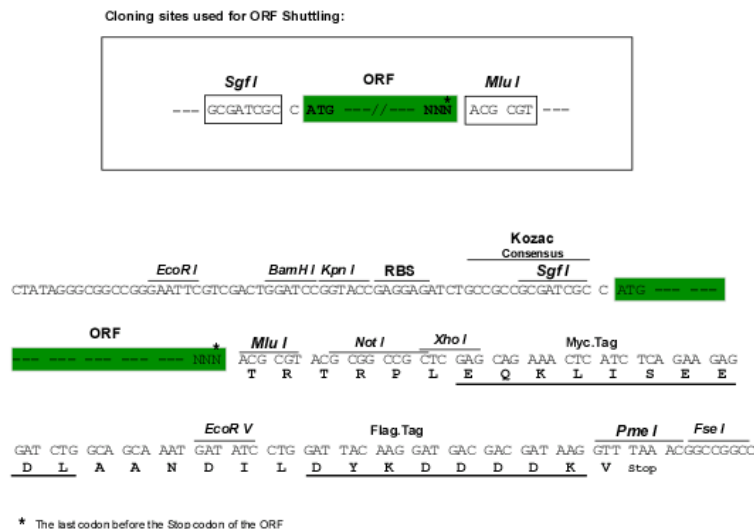
TRTRPLEQKLISEEDLAANDILDYKDDDDKV

**Chromatograms:** [https://cdn.origene.com/chromatograms/mk6308\\_g09.zip](https://cdn.origene.com/chromatograms/mk6308_g09.zip)

**Restriction Sites:** SgfI-MluI



[View online »](#)

**Cloning Scheme:**


**ACCN:** NM\_020408

**ORF Size:** 273 bp

**OTI Disclaimer:** The molecular sequence of this clone aligns with the gene accession number as a point of reference only. However, individual transcript sequences of the same gene can differ through naturally occurring variations (e.g. polymorphisms), each with its own valid existence. This clone is substantially in agreement with the reference, but a complete review of all prevailing variants is recommended prior to use. [More info](#)

**OTI Annotation:** This clone was engineered to express the complete ORF with an expression tag. Expression varies depending on the nature of the gene.

**Components:** The ORF clone is ion-exchange column purified and shipped in a 2D barcoded Matrix tube containing 10ug of transfection-ready, dried plasmid DNA (reconstitute with 100 ul of water).

**Reconstitution Method:**

1. Centrifuge at 5,000xg for 5min.
2. Carefully open the tube and add 100ul of sterile water to dissolve the DNA.
3. Close the tube and incubate for 10 minutes at room temperature.
4. Briefly vortex the tube and then do a quick spin (less than 5000xg) to concentrate the liquid at the bottom.
5. Store the suspended plasmid at -20°C. The DNA is stable for at least one year from date of shipping when stored at -20°C.

**Note:** Plasmids are not sterile. For experiments where strict sterility is required, filtration with 0.22um filter is required.

**RefSeq:** [NM\\_020408.6](#)

**RefSeq Size:** 1514 bp

RefSeq ORF: 276 bp

Locus ID: 57128

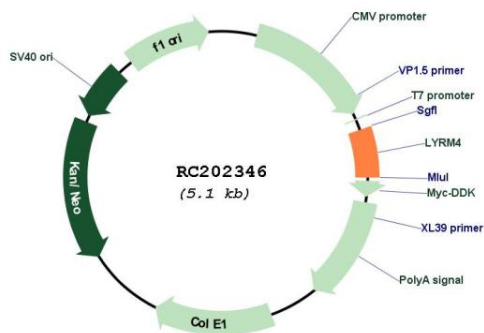
UniProt ID: [Q9HD34](#)

Cytogenetics: 6p25.1

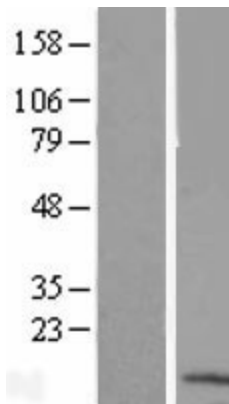
MW: 10.7 kDa

**Gene Summary:** The protein encoded by this gene is found in both mitochondria and the nucleus, where it binds cysteine desulfurase and helps free inorganic sulfur for Fe/S clusters. Disruption of this gene negatively impacts mitochondrial and cytosolic iron homeostasis. [provided by RefSeq, Sep 2016]

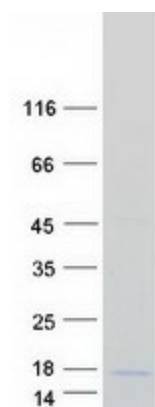
## Product images:



Circular map for RC202346



Western blot validation of overexpression lysate (Cat# [LY412489]) using anti-DDK antibody (Cat# [TA50011-100]). Left: Cell lysates from untransfected HEK293T cells; Right: Cell lysates from HEK293T cells transfected with RC202346 using transfection reagent MegaTran 2.0 (Cat# [TT210002]).



Coomassie blue staining of purified LYRM4 protein (Cat# [TP302346]). The protein was produced from HEK293T cells transfected with LYRM4 cDNA clone (Cat# RC202346) using MegaTran 2.0 (Cat# [TT210002]).