

Product datasheet for **RC202340**

APC16 (ANAPC16) (NM_173473) Human Tagged ORF Clone

Product data:

Product Type: Expression Plasmids
Product Name: APC16 (ANAPC16) (NM_173473) Human Tagged ORF Clone
Tag: Myc-DDK
Symbol: APC16
Synonyms: APC16; bA570G20.3; C10orf104; CENP-27; MSAG
Mammalian Cell Selection: Neomycin
Vector: pCMV6-Entry (PS100001)
E. coli Selection: Kanamycin (25 ug/mL)
ORF Nucleotide Sequence: >RC202340 ORF sequence
Red=Cloning site Blue=ORF Green=Tags(s)

TTTTGTAATACGACTCACTATAGGGCGGCCGGAATTCGTCGACTGGATCCGGTACCGAGGAGATCTGCC
GCC**CGGATCGCC**

ATGGCTGCTTCATCATCATCCTCCTCAGCTGGTGGGGTCAGTGGAAAGTTCTGCTACTGGATCTGGTTTCA
GTGTCTCAGACCTTGCCCCACCACGAAAGCCCTTTTCACCTACCCCAAAGGAGCTGGAGAGATGTTAGA
AGATGGCTCTGAGAGATTCCTCTGCGAATCTGTTTTAGCTATCAAGTGGCATCCACGCTTAAACAGGTG
AAACATGATCAGCAAGTTGCTCGGATGGAAAACTAGCTGGTTTGGTAGAAGAGCTGGAGGCTGACGAGT
GGCGGTTTAAAGCCATCGAGCAGCTGCTGGGATCACCCCTCTTCAGGT

ACGCGTACGCGGCCGCTCGAGCAGAAACTCATCTCAGAAGAGGATCTGGCAGCAAATGATATCCTGGATT
ACAAGGATGACGACGATAAGGTTTAA

Protein Sequence: >RC202340 protein sequence
Red=Cloning site Green=Tags(s)
MAASSSSSAGGVSGSSVTGSGFSVSDLAPPRKALFTYYPKGAGEMLEDGSRFLCESVFSYQVASTLKQV
KHDQQVARMKLAGLVEELEADEWRFKPIEQLLGFTPSSG

TRTRPLEQKLISEEDLAANDILDYKDDDDKV

Chromatograms: https://cdn.origene.com/chromatograms/mk6125_e07.zip

Restriction Sites: SgfI-MluI



[View online »](#)

Cloning Scheme:


ACCN: NM_173473

ORF Size: 330 bp

OTI Disclaimer: The molecular sequence of this clone aligns with the gene accession number as a point of reference only. However, individual transcript sequences of the same gene can differ through naturally occurring variations (e.g. polymorphisms), each with its own valid existence. This clone is substantially in agreement with the reference, but a complete review of all prevailing variants is recommended prior to use. [More info](#)

OTI Annotation: This clone was engineered to express the complete ORF with an expression tag. Expression varies depending on the nature of the gene.

Components: The ORF clone is ion-exchange column purified and shipped in a 2D barcoded Matrix tube containing 10ug of transfection-ready, dried plasmid DNA (reconstitute with 100 ul of water).

- Reconstitution Method:**
1. Centrifuge at 5,000xg for 5min.
 2. Carefully open the tube and add 100ul of sterile water to dissolve the DNA.
 3. Close the tube and incubate for 10 minutes at room temperature.
 4. Briefly vortex the tube and then do a quick spin (less than 5000xg) to concentrate the liquid at the bottom.
 5. Store the suspended plasmid at -20°C. The DNA is stable for at least one year from date of shipping when stored at -20°C.

RefSeq: [NM_173473.4](#)

RefSeq Size: 3252 bp

RefSeq ORF: 333 bp

Locus ID: 119504

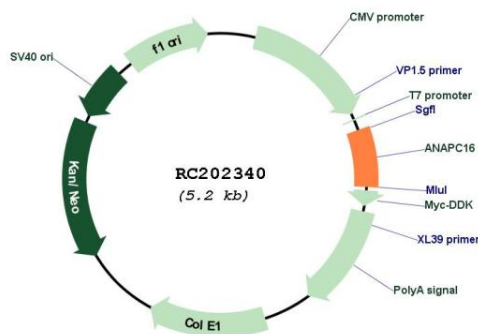
UniProt ID: [Q96DE5](#)

Cytogenetics: 10q22.1

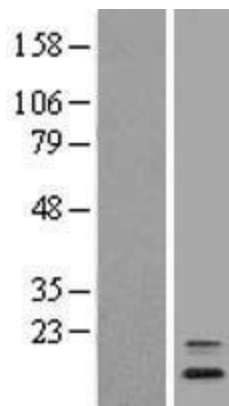
MW: 11.7 kDa

Gene Summary: Component of the anaphase promoting complex/cyclosome (APC/C), a cell cycle-regulated E3 ubiquitin ligase that controls progression through mitosis and the G1 phase of the cell cycle. The APC/C complex acts by mediating ubiquitination and subsequent degradation of target proteins: it mainly mediates the formation of 'Lys-11'-linked polyubiquitin chains and, to a lower extent, the formation of 'Lys-48'- and 'Lys-63'-linked polyubiquitin chains. [UniProtKB/Swiss-Prot Function]

Product images:



Circular map for RC202340



Western blot validation of overexpression lysate (Cat# [LY403554]) using anti-DDK antibody (Cat# [TA50011-100]). Left: Cell lysates from untransfected HEK293T cells; Right: Cell lysates from HEK293T cells transfected with RC202340 using transfection reagent MegaTran 2.0 (Cat# [TT210002]).