

Product datasheet for **RC202336**

CPVL (NM_031311) Human Tagged ORF Clone

Product data:

Product Type:	Expression Plasmids
Product Name:	CPVL (NM_031311) Human Tagged ORF Clone
Tag:	Myc-DDK
Symbol:	CPVL
Synonyms:	HVLP
Mammalian Cell Selection:	Neomycin
Vector:	pCMV6-Entry (PS100001)
E. coli Selection:	Kanamycin (25 ug/mL)



[View online »](#)

ORF Nucleotide Sequence:

>RC202336 ORF sequence
 Red=Cloning site Blue=ORF Green=Tags(s)

TTTTGTAATACGACTCACTATAGGGCGGCCGGAATTCGTCGACTGGATCCGGTACCGAGGAGATCTGCC
 GCC**GCGATCGCC**

ATGGTTGGTGCCATGTGGAAGGTGATTGTTTCGCTGGTCTGTTGATGCCTGGCCCTGTGATGGGCTGT
 TTCGCTCCCTATACAGAAGTGTTTCCATGCCACCTAAGGGAGACTCAGGACAGCCATTATTTCTCACCCC
 TTACATTGAAGCTGGGAAGATCCAAAAAGGAAGAGAATTGAGTTTGGTCGGCCCTTTCCAGGACTGAAC
 ATGAAGAGTTATGCCGGCTTCTCACCGTGAATAAGACTTACAACAGCAACCTCTTCTTCTGGTTCTTCC
 CAGCTCAGATACAGCCAGAAGATGCCCCAGTAGTTCTCTGGTACAGGGTGGCCGGGAGGTTTCATCCAT
 GTTTGGACTCTTTGTGGAACATGGGCCTTATGTTGTACAAGTAACATGACCTTGCCTGACAGAGACTTC
 CCCTGGACCACAACGCTCTCCATGCTTTACATTGACAATCCAGTGGGCACAGGCTTCAGTTTTACTGATG
 ATACCCACGGATATGCAGTCAATGAGGACGATGTAGCACGGGATTTATACAGTGCCTAATTCAGTTTTT
 CCAGATATTTCTGAATATAAAAAATAAGTACTTTTATGCTACTGGGGAGTCTTATGCAGGAAATATGTG
 CCAGCCATTGCACACCTCATCCATTCCCTCAACCTGTGAGAGAGGTGAAGATCAACCTGAACGGAAATTG
 CTATTGGAGATGGATATTCTGATCCCGAATCAATTATAGGGGGCTATGCAGAATTCCTGTACCAAATGG
 CTTGTTGGATGAGAAGCAAAAAAGTACTTCCAGAAGCAGTGCCATGAATGCATAGAACACATCAGGAAG
 CAGAACTGGTTTGGGCCCTTTGAAATACTGGATAAACTACTAGATGGCGACTTAACAAGTATCCTTCTT
 ACTTCCAGAATGTTACAGGATGTAGTAATTACTATAACTTTTTGCGGTGCACGGAACCTGAGGATCAGCT
 TTAATAAGTAAATTTTGTCACTCCCAGAGGTGAGACAAGCCATCCACGTGGGGAATCAGACTTTAAT
 GATGGAAGTATAGTTGAAAAGTACTTGCAGAAAGATACAGTACAGTACAGTAAAGCCATGGTTAACTGAAA
 TCATGAATAATTATAAGGTTCTGATCTACAATGGCCAAGTGGACATCATCGTGGCAGCTGCCCTGCAGAG
 GCGCTCCTTGATGGGCATGGACTGGAAAAGGATCCAGGAATACAAGAAGGCAGAAAAAAGTTTGGAAAG
 ATCTTTAAATCTGACAGTGAAGTGGCTGGTTACATCCGGCAAGTGGGTGACTTCCATCAGGTAATTATTC
 GAGGTGGAGGACATATTTACCCTATGACCAGCCTCTGAGAGCTTTTGCATGATTAATCGATTCATTTA
 TGGAAAAGGATGGGATCCTTATGTTGGA

ACGCGTACGCGGCCGCTCGAGCAGAAACTCATCTCAGAAGAGGATCTGGCAGCAATGATATCCTGGATT
 ACAAGGATGACGACGATAAGGTTTAA

Protein Sequence:

>RC202336 protein sequence
 Red=Cloning site Green=Tags(s)

MVGAMWKVIVSLVLLMPGPCDGLFRSLYRSVSMPPKGDGSGQPLFLTPYIEAGKIQKGRELSLVGPFPLN
 MKSYAGFLTVNKTYNLFFWFPAQIQPEDAPVVLWLQGGPGGSSMFGLFVEHGPYVVTSNMTRLRDRDF
 PWTTLTSMYIDNPVGTGFSFTDDTHGYAVNEDDVARLDLYSALIQFFQIFPEYKNDFYVTGESYAGKYV
 PAIAHLIHLNPNVREVKINLNGIAIGDGYSDPESIIIGGYAEFLYQIGLLDEKQKKYFQKQCHECIEHIRK
 QNWFEAFEILDKLLDGDLTSDPSYFQNVGTGCSNYNFLRCTEPEDQLYYVKFLSLPEVRQAIHVGNQTFN
 DGTIVEKYLREDTVQSVKPWLTEIMNNYKVLINYGQLDIIVAAALTERSLMGMDWKGQSQEYKKAEEKVWK
 IFKSDSEVAGYIRQVGFHQVIIRGGHILPYDQPLRAFDMINRFIYGKGDWDPYVG

TRTRPLEQKLISEEDLAANDILDYKDDDDKV

Chromatograms:

https://cdn.origene.com/chromatograms/mk6269_c08.zip

Restriction Sites:

Sgfl-Mlul

Cloning Scheme:



ACCN: NM_031311

ORF Size: 1428 bp

OTI Disclaimer: The molecular sequence of this clone aligns with the gene accession number as a point of reference only. However, individual transcript sequences of the same gene can differ through naturally occurring variations (e.g. polymorphisms), each with its own valid existence. This clone is substantially in agreement with the reference, but a complete review of all prevailing variants is recommended prior to use. [More info](#)

OTI Annotation: This clone was engineered to express the complete ORF with an expression tag. Expression varies depending on the nature of the gene.

Components: The ORF clone is ion-exchange column purified and shipped in a 2D barcoded Matrix tube containing 10ug of transfection-ready, dried plasmid DNA (reconstitute with 100 ul of water).

Reconstitution Method:

1. Centrifuge at 5,000xg for 5min.
2. Carefully open the tube and add 100ul of sterile water to dissolve the DNA.
3. Close the tube and incubate for 10 minutes at room temperature.
4. Briefly vortex the tube and then do a quick spin (less than 5000xg) to concentrate the liquid at the bottom.
5. Store the suspended plasmid at -20°C. The DNA is stable for at least one year from date of shipping when stored at -20°C.

RefSeq: [NM_031311.2](#), [NP_112601.2](#)

RefSeq Size: 1691 bp

RefSeq ORF: 1431 bp

Locus ID: 54504

UniProt ID: [Q9H3G5](#)

Cytogenetics: 7p14.3

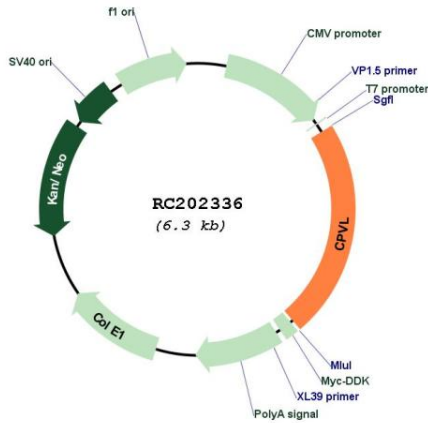
Domains: serine_carbpept

Protein Families: Druggable Genome, Protease

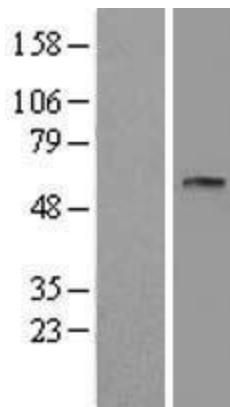
MW: 54.2 kDa

Gene Summary: The protein encoded by this gene is a carboxypeptidase and bears strong sequence similarity to serine carboxypeptidases. Carboxypeptidases are a large class of proteases that act to cleave a single amino acid from the carboxy termini of proteins or peptides. The exact function of this protein, however, has not been determined. [provided by RefSeq, Jan 2017]

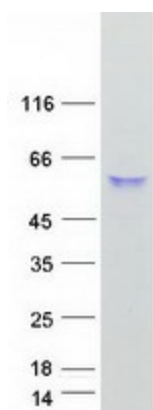
Product images:



Circular map for RC202336



Western blot validation of overexpression lysate (Cat# [LY410561]) using anti-DDK antibody (Cat# [TA50011-100]). Left: Cell lysates from untransfected HEK293T cells; Right: Cell lysates from HEK293T cells transfected with RC202336 using transfection reagent MegaTran 2.0 (Cat# [TT210002]).



Coomassie blue staining of purified CPVL protein (Cat# [TP302336]). The protein was produced from HEK293T cells transfected with CPVL cDNA clone (Cat# RC202336) using MegaTran 2.0 (Cat# [TT210002]).