

Product datasheet for **RC202335**

SQOR (NM_021199) Human Tagged ORF Clone

Product data:

Product Type:	Expression Plasmids
Product Name:	SQOR (NM_021199) Human Tagged ORF Clone
Tag:	Myc-DDK
Symbol:	SQOR
Synonyms:	CGI-44; PRO1975; SQR; SQRDL
Mammalian Cell Selection:	Neomycin
Vector:	pCMV6-Entry (PS100001)
E. coli Selection:	Kanamycin (25 ug/mL)



[View online »](#)

ORF Nucleotide Sequence:

>RC202335 ORF sequence
 Red=Cloning site Blue=ORF Green=Tags(s)

TTTTGTAATACGACTCACTATAGGGCGGCCGGAATTCGTCGACTGGATCCGGTACCGAGGAGATCTGCC
 GCC**CGCATCGCC**

ATGGTGCCACTGGTGGCTGTGGTATCAGGGCCCGTGCCAGCTCTTTGCCTGCCTGCTCAGGCTGGGCA
 CTCAGCAGGTTCGGCCCCCTCAGCTGCACACCGGGCCAGCCATGCGGCCAGGAACCATTATGAGGTGCT
 GGTGCTGGGTGGGGCAGTGGCGGAATCACCATGGCTGCCCGCATGAAGAGGAAAGTGGGTGCAGAGAAT
 GTGGCCATTGTTGAGCCAGTGAGAGACATTTCTACCAGCCAATCTGGACTGGTGGGTGCTGGTGCCA
 AACAAATGTCCTCATCTGGTCGTCACCGCAAGTGTGATTCCATCTGGTGTAGAATGGATCAAAGCTAG
 AGTGACTGAGTTGAACCCAGACAAGAAGTGCATTCACACAGATGACGACGAGAAGATCTCCTACCGATAT
 CTTATTATTGCTCTCGGAATCCAGCTGGACTATGAGAAGATTAAGGCCTACCTGAAGGTTTCGCTCATC
 CAAAAATAGGGTGAATTATTCAGTTAAGACTGTAGAGAAGACATGGAAGCTCTGCAGGACTTCAAAGA
 GGGCAATGCCATTTACCTTCCAAATACTCCAGTGAAGTGTGCTGGAGCCCTCAGAAGATCATGTAC
 TTATCAGAAGCCTACTTCAGGAAGACAGGAAGCGATCCAAGGCCAATATCATTTTCAACACTTCTCTTG
 GAGCCATTTTCGGGGTTAAGAAGTATGCAGATGCCCTGCAGGAGATCATCCAGGAGCGGAACCTCACTGT
 TAACTACAAGAAAAACCTCATTGAAGTCCGAGCCGATAAACAAGAGGCTGTATTTGAGAACCTGGACAAA
 CCAGGAGAGACCAAGTGATTTTCATATGAAATGCTTTCATGTACACCTCCAATGAGCCCACCAGATGTCC
 TCAAGACCAGTCTGTGGCTGATGCTGCTGGTTGGGTGGATGTGGATAAAGAAACTCTGCAACACAGGAG
 GTACCCAAATGTGTTGGGATTTGGGACTGCACCAACCTTCTACGTCAAAGACCCTGCTGCAGTAGCT
 GCCCAGTCAGGAATACTTGATAGGACAATTTCTGTAATTATGAAGAATCAAACACCAACAAGAAGTATG
 ATGGCTACACATCATGTCCACTGGTGACCGGCTACAACCGTGTGATTCTTGCTGAGTTTGACTACAAGC
 AGAGCCGCTAGAAACCTTCCCTTTGATCAAAGCAAAGAGCGCCTTTCCATGTATCTCATGAAAGCTGAC
 CTGATGCCTTTCTGTATTGGAATATGATGCTAAGGGTTACTGGGAGGACCAGCGTTTCTGCGCAAGT
 TGTTTCATCTAGGTATGAGT

ACGCGTACGCGGCCGCTCGAGCAGAACTCATCTCAGAAGAGGATCTGGCAGCAAATGATATCCTGGATT
 ACAAGGATGACGACGATAAGGTTTAA

Protein Sequence:

>RC202335 protein sequence
 Red=Cloning site Green=Tags(s)

MVPLVAVVSGPRAQLFACLLRLGTQQVGPLQLHTGASHAARNHYEVLVLGGSGGITMAARMKRKVGAE
 VAIVEPSEHFYQPIWTLVGAGAKQLSSSRPTASVIPSGVEWIKARVTELNPKNCIHTDDDEKISYRY
 LIIALGIQLDYEKIKGLPEGFAPKIGSNYSVKTVEKTWKALQDFKEGNAIFTFPNTPVKAGAPQKIMY
 LSEAYFRKTGKRSKANIIFNLSLGAIFGVKKYADALQEIIQERNLTVNYKKNLIEVRADKQEAUVENLDK
 PGETQVISYEMLHVTPPMSPDVLKTSVADAAGWVDVDETQHRYPNVFGIGDCTNLPTSKTAAAVA
 AQSGILDRTISVIMKNQPTKKYDGYTSCPLVTGYNRVILAEFDYKAEPLETFPFQSKERLSMYLMKAD
 LMPFLYWNMLRGYWGPAFLRKLFLHGM

TRTRPLEQKLISEEDLAANDILDYKDDDDKV

Chromatograms:

https://cdn.origene.com/chromatograms/mk6539_h03.zip

Restriction Sites:

Sgfl-MluI

Cloning Scheme:


ACCN: NM_021199

ORF Size: 1350 bp

OTI Disclaimer: The molecular sequence of this clone aligns with the gene accession number as a point of reference only. However, individual transcript sequences of the same gene can differ through naturally occurring variations (e.g. polymorphisms), each with its own valid existence. This clone is substantially in agreement with the reference, but a complete review of all prevailing variants is recommended prior to use. [More info](#)

OTI Annotation: This clone was engineered to express the complete ORF with an expression tag. Expression varies depending on the nature of the gene.

Components: The ORF clone is ion-exchange column purified and shipped in a 2D barcoded Matrix tube containing 10ug of transfection-ready, dried plasmid DNA (reconstitute with 100 ul of water).

- Reconstitution Method:**
1. Centrifuge at 5,000xg for 5min.
 2. Carefully open the tube and add 100ul of sterile water to dissolve the DNA.
 3. Close the tube and incubate for 10 minutes at room temperature.
 4. Briefly vortex the tube and then do a quick spin (less than 5000xg) to concentrate the liquid at the bottom.
 5. Store the suspended plasmid at -20°C. The DNA is stable for at least one year from date of shipping when stored at -20°C.

RefSeq: [NM_021199.4](#)

RefSeq Size: 2003 bp

RefSeq ORF: 1353 bp

Locus ID: 58472

UniProt ID: [Q9Y6N5](#)

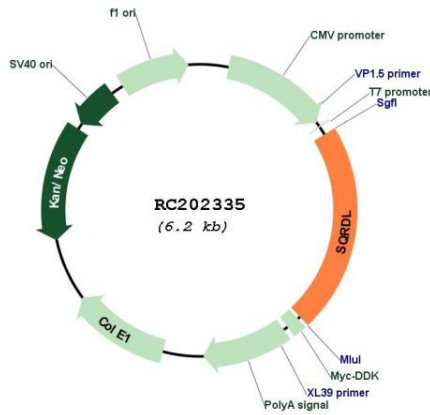
Cytogenetics: 15q21.1

Protein Families: Druggable Genome

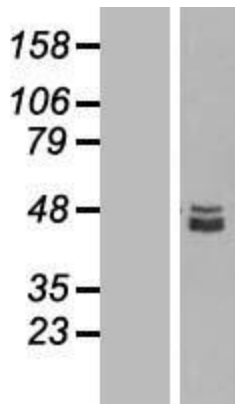
MW: 50 kDa

Gene Summary: The protein encoded by this gene may function in mitochondria to catalyze the conversion of sulfide to persulfides, thereby decreasing toxic concentrations of sulfide. Alternative splicing results in multiple transcript variants that encode the same protein. [provided by RefSeq, Sep 2012]

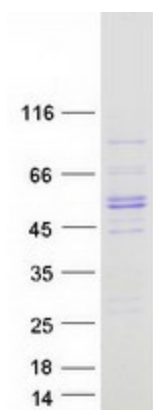
Product images:



Circular map for RC202335



Western blot validation of overexpression lysate (Cat# [LY412038]) using anti-DDK antibody (Cat# [TA50011-100]). Left: Cell lysates from untransfected HEK293T cells; Right: Cell lysates from HEK293T cells transfected with RC202335 using transfection reagent MegaTran 2.0 (Cat# [TT210002]).



Coomassie blue staining of purified SQOR protein (Cat# [TP302335]). The protein was produced from HEK293T cells transfected with SQOR cDNA clone (Cat# RC202335) using MegaTran 2.0 (Cat# [TT210002]).