

Product datasheet for **RC202331**

MAGEH1 (NM_014061) Human Tagged ORF Clone

Product data:

Product Type:	Expression Plasmids
Product Name:	MAGEH1 (NM_014061) Human Tagged ORF Clone
Tag:	Myc-DDK
Symbol:	MAGEH1
Synonyms:	APR-1; APR1; MAGEH
Mammalian Cell Selection:	Neomycin
Vector:	pCMV6-Entry (PS100001)
E. coli Selection:	Kanamycin (25 ug/mL)
ORF Nucleotide Sequence:	>RC202331 ORF sequence Red=Cloning site Blue=ORF Green=Tags(s)

TTTTGTATACGACTCACTATAGGGCGGCCGGAATTCGTCGACTGGATCCGGTACCGAGGAGATCTGCC
GCC**CGATCGCC**

ATGCCTCGGGGACGAAAGAGTCGGCGCCGCGTAATGCGAGAGCCGAGAAGAGAACCGCAACAATCGCA
AAATCCAGGCCTCAGAGGCCTCCGAGACCCCTATGGCCGCTCTGTGGTAGCGAGCACCCCGAAGACGA
CCTGAGCGGCCCCGAGGAAGACCCGAGCACTCCAGAGGAGGCCTCTACCACCCCTGAAGAAGCCTCGAGC
ACTGCCAAGCACAAAAGCCTTCAGTGCCCGGAGCAATTTTCAGGGCACCAAGAAAAGTCTCCTGATGT
CTATATTAGCGCTCATCTTCATCATGGGCAACAGCGCCAAGGAAGCTCTGGTCTGAAAGTGCTGGGGAA
GTAGGAATGCAGCCTGGACGTCAGCACAGCATCTTTGGAGATCCGAAGAAGATCGTCACAGAAGAGTTT
GTGCGCAGAGGGTACCTGATTTATAAACCGGTGCCCCGTAGCAGTCCGGTGGAGTATGAGTTCTTCTGGG
GGCCCCGAGCACACGTGGAATCGAGCAAAGTGAAGTCATGCATTTTGTGGCAAGGGTTCGTAACCGATG
CTCTAAAGACTGGCCTTGAATTATGACTGGGATTCGGACGATGATGCAGAGGTTGAGGCTATCCTCAAT
TCAGGTGCTAGGGGTTATTCCGCCCT

ACGCGTACGCGGCCGCTCGAGCAGAACTCATCTCAGAAGAGGATCTGGCAGCAAATGATATCCTGGATT
ACAAGGATGACGACGATAAGGTTTAA



[View online »](#)

Protein Sequence: >RC202331 protein sequence
 Red=Cloning site Green=Tags(s)

MPRGRKSRRRRNARAAEENNRNRIQASEASETPMAASVVASTPEDDLSPPEEDPSTPEEASTTPEEASS
 TAQAQKPSVPRSNFQGTKSLLMSILALIFIMGNSAKEALVWVLGKLGMPGRQHSIFGDPKKIVTEEF
 VRRGYLIYKPVPRSSPVEYEFFWGPRAHVESKLVKMHFVARVRNRCSDWPCNYDWDSDDDAEVEAILN
 SGARGYSAP

TRTRPLEQKLISEEDLAANDILDYKDDDDKV

Chromatograms: https://cdn.origene.com/chromatograms/mk6304_f12.zip

Restriction Sites: SgfI-MluI

Cloning Scheme:



ACCN: NM_014061

ORF Size: 657 bp

OTI Disclaimer: The molecular sequence of this clone aligns with the gene accession number as a point of reference only. However, individual transcript sequences of the same gene can differ through naturally occurring variations (e.g. polymorphisms), each with its own valid existence. This clone is substantially in agreement with the reference, but a complete review of all prevailing variants is recommended prior to use. [More info](#)

OTI Annotation: This clone was engineered to express the complete ORF with an expression tag. Expression varies depending on the nature of the gene.

Components: The ORF clone is ion-exchange column purified and shipped in a 2D barcoded Matrix tube containing 10ug of transfection-ready, dried plasmid DNA (reconstitute with 100 ul of water).

Reconstitution Method:

1. Centrifuge at 5,000xg for 5min.
2. Carefully open the tube and add 100ul of sterile water to dissolve the DNA.
3. Close the tube and incubate for 10 minutes at room temperature.
4. Briefly vortex the tube and then do a quick spin (less than 5000xg) to concentrate the liquid at the bottom.
5. Store the suspended plasmid at -20°C. The DNA is stable for at least one year from date of shipping when stored at -20°C.

Note: Plasmids are not sterile. For experiments where strict sterility is required, filtration with 0.22um filter is required.

RefSeq: [NM_014061.5](#)

RefSeq Size: 1485 bp

RefSeq ORF: 660 bp

Locus ID: 28986

UniProt ID: [Q9H213](#)

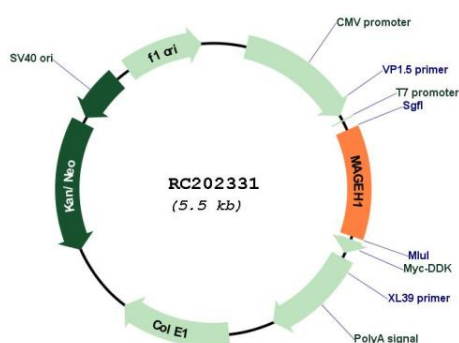
Cytogenetics: Xp11.21

Protein Families: Transmembrane

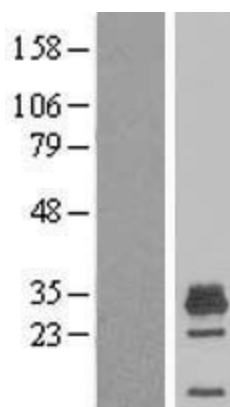
MW: 24.4 kDa

Gene Summary: This gene belongs to the non-CT (non cancer/testis) subgroup of the melanoma-associated antigen (MAGE) superfamily. The encoded protein is likely associated with apoptosis, cell cycle arrest, growth inhibition or cell differentiation. The protein may be involved in the atRA (all-trans retinoic acid) signaling through the STAT1-alpha (signal transducer and activator of transcription 1-alpha) pathway. [provided by RefSeq, Aug 2013]

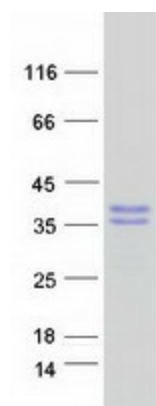
Product images:



Circular map for RC202331



Western blot validation of overexpression lysate (Cat# [LY415504]) using anti-DDK antibody (Cat# [TA50011-100]). Left: Cell lysates from untransfected HEK293T cells; Right: Cell lysates from HEK293T cells transfected with RC202331 using transfection reagent MegaTran 2.0 (Cat# [TT210002]).



Coomassie blue staining of purified MAGEH1 protein (Cat# [TP302331]). The protein was produced from HEK293T cells transfected with MAGEH1 cDNA clone (Cat# RC202331) using MegaTran 2.0 (Cat# [TT210002]).