

## Product datasheet for RC202326

### DIMT1L (DIMT1) (NM\_014473) Human Tagged ORF Clone

#### Product data:

Product Type:	Expression Plasmids
Product Name:	DIMT1L (DIMT1) (NM_014473) Human Tagged ORF Clone
Tag:	Myc-DDK
Symbol:	DIMT1L
Synonyms:	DIM1; DIMT1L; HSA9761; HUSSY5
Mammalian Cell Selection:	Neomycin
Vector:	pCMV6-Entry (PS100001)
E. coli Selection:	Kanamycin (25 ug/mL)
ORF Nucleotide Sequence:	>RC202326 ORF sequence Red=Cloning site Blue=ORF Green=Tags(s)

TTTTGTAATACGACTCACTATAGGGCGGCCGGAATTCGTCGACTGGATCCGGTACCGAGGAGATCTGCC  
 GCCCGCATCGCC

ATGCCGAAGGTCAAGTCGGGGGCCATCGGCCGCCGCCGGCGGGCAGGAGCAGCGCCGGGAGCTGAAGA  
 GCGCTGGAGGACTCATGTTCAACACGGGGATTGGGCAGCACATTTGAAAAATCCTCTCATTATTAACAG  
 CATTATCGATAAGGCTGCCTTAAGACCACTGATGTAGTGCTGGAAGTTGGACCTGGAACCTGGCAACATG  
 ACTGTAAAGTTGTTAGAAAAGGCAAAAAGGTTGTTGCTTGTGAAGTTGACCAAGGCTAGTAGCTGAAC  
 TTCACAAAAGAGTTCAGGGCAGCCTGTGGCCAGCAAACTTCAAGTACTGGTGGGTGATGTGCTGAAAAC  
 AGATTTGCCATTCTTTGATACTTGTGTGGCAAATTTGCCTTATCAGATCTCTTCGCCTTTTGTCTTCAAG  
 CTGTTGCTACATCGACCTTTTTTCAGGTGTGCTATACTTATGTTTCAAAGAGAATTTGCCCTCCGACTGG  
 TTGCAAAACCTGGAGATAAGTTATACTGCAGACTCTCAATTAATACACAGCTGTTGGCACGTGTGGACCA  
 TCTAATGAAAGTGGGAAAGAATAACTTCAGACCACCGCCAAGGTGGAATCCAGTGTTGTAAGGATAGAA  
 CCTAAGAATCCACCACCCCATCAATTTTCAGGAATGGGATGGTCTAGTAAGGATAACCTTTGTTAGGA  
 AAAACAAGACACTCTCTGCTGCATTTAAATCAAGTGCAGTGCAACAACCTTTGGAAAAAACTACAGAAT  
 TCACTGTTCAAGTCCATAATATTATAATACCAGAAGATTTTCAGCATAGCAGATAAAATACAGCAAATCCTA  
 ACCAGCACAGGTTTGTAGTACAAACGGGCCGTTCCATGGACATAGATGACTTCATCAGATTGCTACATG  
 GATTCAACGCAGAAGGTATTCATTTTCC

ACGCGTACGCGGCCGCTCGAGCAGAACTCATCTCAGAAGAGGATCTGGCAGCAAATGATATCCTGGATT  
 ACAAGGATGACGACGATAAGGTTTAA


[View online »](#)

**Protein Sequence:** >RC202326 protein sequence  
 Red=Cloning site Green=Tags(s)

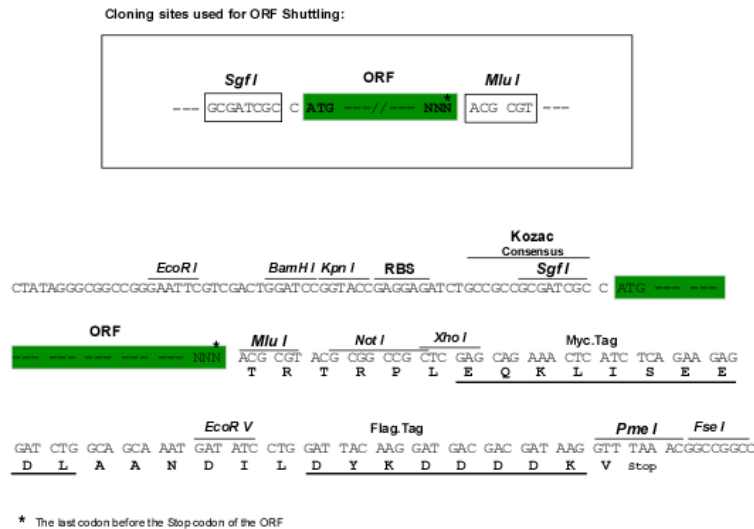
MPKVKSGAIGRRRGRQEQRRELKSAGGLMFNTGIGQHILKNPLIINSIIDKAALRPTDVLVLEVGPGTGNM  
 TVKLLKAKKVACELDPRLVAEHLKRVQGTVPASKLQVLVGDVLKTDLPFFDTCVANLPYQISSPFVFK  
 LLLHRPFFRCAILMFQREFALRLVAKPGDKLYCRLSINTQLLARVDHLMKVGKNNFRPPPKVESSVRIE  
 PKNPPPPINFQEWDLVRITFVRKNKTLAAFKSSAVQQLLEKNYRIHCSVHNIIIPEDFSIADKIQQIL  
 TSTGFSDKRARSMDIDDFIRLLHGFNAEGIHFS

TRTRPLEQKLISEEDLAANDILDYKDDDDKV

**Chromatograms:** [https://cdn.origene.com/chromatograms/mk6308\\_d12.zip](https://cdn.origene.com/chromatograms/mk6308_d12.zip)

**Restriction Sites:** SgfI-MluI

**Cloning Scheme:**



**ACCN:** NM\_014473

**ORF Size:** 939 bp

**OTI Disclaimer:** The molecular sequence of this clone aligns with the gene accession number as a point of reference only. However, individual transcript sequences of the same gene can differ through naturally occurring variations (e.g. polymorphisms), each with its own valid existence. This clone is substantially in agreement with the reference, but a complete review of all prevailing variants is recommended prior to use. [More info](#)

**OTI Annotation:** This clone was engineered to express the complete ORF with an expression tag. Expression varies depending on the nature of the gene.

**Components:** The ORF clone is ion-exchange column purified and shipped in a 2D barcoded Matrix tube containing 10ug of transfection-ready, dried plasmid DNA (reconstitute with 100 ul of water).

**Reconstitution Method:**

1. Centrifuge at 5,000xg for 5min.
2. Carefully open the tube and add 100ul of sterile water to dissolve the DNA.
3. Close the tube and incubate for 10 minutes at room temperature.
4. Briefly vortex the tube and then do a quick spin (less than 5000xg) to concentrate the liquid at the bottom.
5. Store the suspended plasmid at -20°C. The DNA is stable for at least one year from date of shipping when stored at -20°C.

**Note:** Plasmids are not sterile. For experiments where strict sterility is required, filtration with 0.22um filter is required.

**RefSeq:** [NM\\_014473.1](#)

**RefSeq Size:** 1557 bp

**RefSeq ORF:** 942 bp

**Locus ID:** 27292

**UniProt ID:** [Q9UNQ2](#)

**Cytogenetics:** 5q12.1

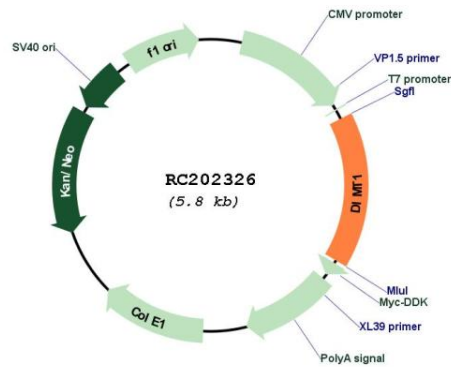
**Domains:** rADc

**Protein Families:** Druggable Genome

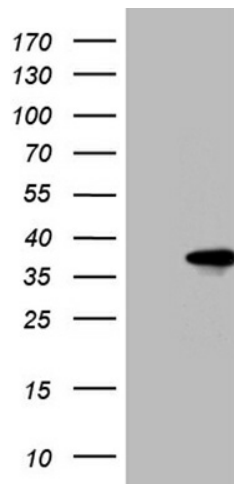
**MW:** 35.2 kDa

**Gene Summary:** The protein encoded by this gene is a methyltransferase that is responsible for dimethylation of adjacent adenosines near the 18S rRNA decoding site. The encoded protein is essential for ribosome biogenesis, although its catalytic activity is not involved in the process. The yeast ortholog of this protein functions in the cytoplasm while this protein functions in the nucleus. [provided by RefSeq, Jan 2017]

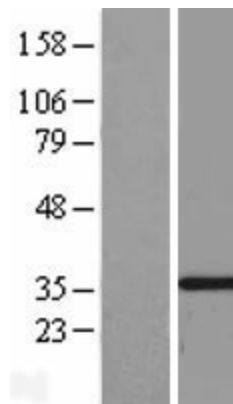
## Product images:



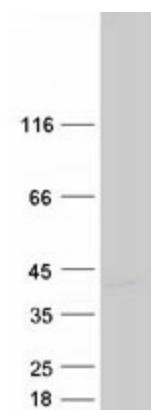
Circular map for RC202326



HEK293T cells were transfected with the pCMV6-ENTRY control (Cat# [PS100001], Left lane) or pCMV6-ENTRY DIMT1L (Cat# RC202326, Right lane) cDNA for 48 hrs and lysed. Equivalent amounts of cell lysates (5 ug per lane) were separated by SDS-PAGE and immunoblotted with anti-DIMT1L (Cat# [TA810135])(1:2000). Positive lysates [LY415255] (100ug) and [LC415255] (20ug) can be purchased separately from OriGene.



Western blot validation of overexpression lysate (Cat# [LY415255]) using anti-DDK antibody (Cat# [TA50011-100]). Left: Cell lysates from untransfected HEK293T cells; Right: Cell lysates from HEK293T cells transfected with RC202326 using transfection reagent MegaTran 2.0 (Cat# [TT210002]).



Coomassie blue staining of purified DIMT1 protein (Cat# [TP302326]). The protein was produced from HEK293T cells transfected with DIMT1 cDNA clone (Cat# RC202326) using MegaTran 2.0 (Cat# [TT210002]).