

## Product datasheet for **RC202322L4V**

### eIF2B epsilon (EIF2B5) (NM\_003907) Human Tagged ORF Clone Lentiviral Particle

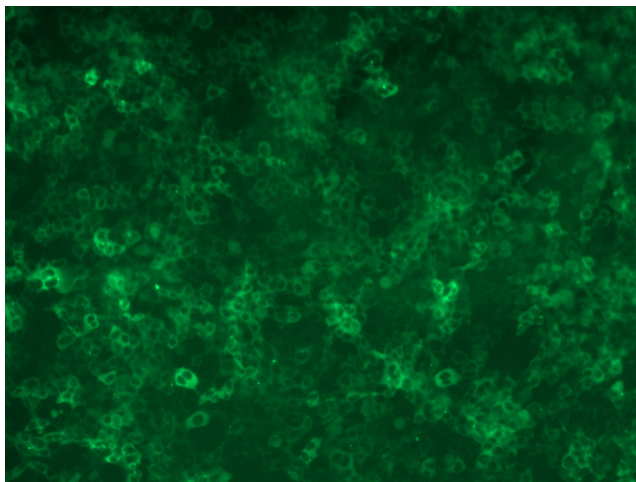
#### Product data:

Product Type:	Lentiviral Particles
Product Name:	eIF2B epsilon (EIF2B5) (NM_003907) Human Tagged ORF Clone Lentiviral Particle
Symbol:	eIF2B epsilon
Synonyms:	CACH; CLE; EIF-2B; EIF2Bepsilon; LVWM
Mammalian Cell Selection:	Puromycin
Vector:	pLenti-C-mGFP-P2A-Puro (PS100093)
Tag:	mGFP
ACCN:	NM_003907
ORF Size:	2163 bp
ORF Nucleotide Sequence:	The ORF insert of this clone is exactly the same as(RC202322).
OTI Disclaimer:	The molecular sequence of this clone aligns with the gene accession number as a point of reference only. However, individual transcript sequences of the same gene can differ through naturally occurring variations (e.g. polymorphisms), each with its own valid existence. This clone is substantially in agreement with the reference, but a complete review of all prevailing variants is recommended prior to use. <a href="#">More info</a>
OTI Annotation:	This clone was engineered to express the complete ORF with an expression tag. Expression varies depending on the nature of the gene.
RefSeq:	<a href="#">NM_003907.2</a> , <a href="#">NP_003898.1</a>
RefSeq Size:	2898 bp
RefSeq ORF:	2166 bp
Locus ID:	8893
UniProt ID:	<a href="#">Q13144</a>
Cytogenetics:	3q27.1
MW:	80.4 kDa


[View online »](#)

**Gene Summary:**

This gene encodes one of five subunits of eukaryotic translation initiation factor 2B (EIF2B), a GTP exchange factor for eukaryotic initiation factor 2 and an essential regulator for protein synthesis. Mutations in this gene and the genes encoding other EIF2B subunits have been associated with leukoencephalopathy with vanishing white matter. [provided by RefSeq, Nov 2009]

**Product images:**


[RC202322L4] was used to prepare Lentiviral particles using [TR30037] packaging kit. HEK293T cells were transduced with RC202322L4V particle to overexpress human EIF2B5-mGFP fusion protein.