

Product datasheet for RC202315

C9ORF46 (PLGRKT) (NM_018465) Human Tagged ORF Clone

Product data:

Product Type: Expression Plasmids
Product Name: C9ORF46 (PLGRKT) (NM_018465) Human Tagged ORF Clone
Tag: Myc-DDK
Symbol: C9ORF46
Synonyms: AD025; C9orf46; MDS030; Plg-R(KT); PLG-RKT
Mammalian Cell Selection: Neomycin
Vector: pCMV6-Entry (PS100001)
E. coli Selection: Kanamycin (25 ug/mL)
ORF Nucleotide Sequence: >RC202315 ORF sequence
Red=Cloning site Blue=ORF Green=Tags(s)

TTTTGTAATACGACTCACTATAGGGCGGCCGGAATTCGTCGACTGGATCCGGTACCGAGGAGATCTGCC
GCC**CGATCGCC**

ATGGGGTTTATATTTTCAAATCTATGAATGAAAGCATGAAAAATCAAAGGAGTTCATGCTTATGAATG
CTCGACTTCAGCTGAAAGGCAGCTCATCATGCAGAGTAAATGAGGGAAAGACAAATGGCCATGCAGAT
TGCGTGGTCTCGGAATTCCTCAAATATTTTGAACCTTTTTTGGCCTTGCCAGCCATCTCTTAAACAGCT
GGAGCGATTAAGAAAGCCAGCCTCCTGGTCCCGATTGTCCATTAAGCTTTATCCTCACCTACC
AGTATGACTTGGGCTATGGAACCTTTTAGAAAGAATGAAAGGTGAAGCTGAGGACATACTGAAACAGA
AAAGAGTAAATTGCAGCTGCCAAGAGGAATGATCACTTTTGAAGCATTGAAAAAGCCAGAAAGGAACAG
AGTAGATTCTTCATAGACAAA

ACGCGTACGCGGCCGCTCGAGCAGAACTCATCTCAGAAGAGGATCTGGCAGCAAATGATATCCTGGATT
ACAAGGATGACGACGATAAGGTTTAA

Protein Sequence: >RC202315 protein sequence
Red=Cloning site Green=Tags(s)
MGFIFSKSMNESMKNQKEFMLMNARLQLERQLIMQSEMRERQMAMQIAWSREFLKYFGTFFGLAAISLTA
GAIKKKKPAFLVPIVPLSFILTYQYDLGYGTLLERMKGEAEDILETEKSKLQLPRGMITFESIEKARKEQ
SRFFIDK

TRTRPLEQKLISEEDLAANDILDYKDDDDKV

Chromatograms: https://cdn.origene.com/chromatograms/mk6302_g12.zip



[View online »](#)

Restriction Sites: SgfI-MluI

Cloning Scheme:



ACCN: NM_018465

ORF Size: 441 bp

OTI Disclaimer: The molecular sequence of this clone aligns with the gene accession number as a point of reference only. However, individual transcript sequences of the same gene can differ through naturally occurring variations (e.g. polymorphisms), each with its own valid existence. This clone is substantially in agreement with the reference, but a complete review of all prevailing variants is recommended prior to use. [More info](#)

OTI Annotation: This clone was engineered to express the complete ORF with an expression tag. Expression varies depending on the nature of the gene.

Components: The ORF clone is ion-exchange column purified and shipped in a 2D barcoded Matrix tube containing 10ug of transfection-ready, dried plasmid DNA (reconstitute with 100 ul of water).

Reconstitution Method:

1. Centrifuge at 5,000xg for 5min.
2. Carefully open the tube and add 100ul of sterile water to dissolve the DNA.
3. Close the tube and incubate for 10 minutes at room temperature.
4. Briefly vortex the tube and then do a quick spin (less than 5000xg) to concentrate the liquid at the bottom.
5. Store the suspended plasmid at -20°C. The DNA is stable for at least one year from date of shipping when stored at -20°C.

RefSeq: [NM_018465.4](#)

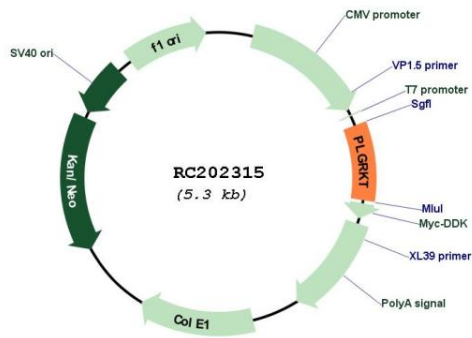
RefSeq Size: 1020 bp

RefSeq ORF: 444 bp

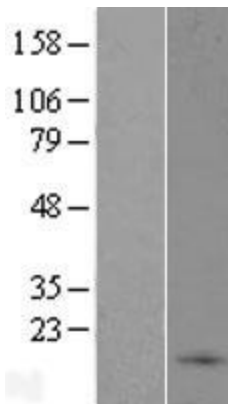
Locus ID: 55848

UniProt ID: [Q9HBL7](#)
Cytogenetics: 9p24.1
Protein Families: Transmembrane
MW: 17.2 kDa
Gene Summary: Receptor for plasminogen. Regulates urokinase plasminogen activator-dependent and stimulates tissue-type plasminogen activator-dependent cell surface plasminogen activation. Proposed to be part of a local catecholaminergic cell plasminogen activation system that regulates neuroendocrine prohormone processing. Involved in regulation of inflammatory response; regulates monocyte chemotactic migration and matrix metalloproteinase activation, such as of MMP2 and MMP9.[UniProtKB/Swiss-Prot Function]

Product images:



Circular map for RC202315



Western blot validation of overexpression lysate (Cat# [LY413043]) using anti-DDK antibody (Cat# [TA50011-100]). Left: Cell lysates from untransfected HEK293T cells; Right: Cell lysates from HEK293T cells transfected with RC202315 using transfection reagent MegaTran 2.0 (Cat# [TT210002]).