

Product datasheet for **RC202305**

MED30 (NM_080651) Human Tagged ORF Clone

Product data:

Product Type: Expression Plasmids
Product Name: MED30 (NM_080651) Human Tagged ORF Clone
Tag: Myc-DDK
Symbol: MED30
Synonyms: MED30S; THRAP6; TRAP25
Mammalian Cell Selection: Neomycin
Vector: pCMV6-Entry (PS100001)
E. coli Selection: Kanamycin (25 ug/mL)
ORF Nucleotide Sequence: >RC202305 ORF sequence
 Red=Cloning site Blue=ORF Green=Tags(s)

TTTTGTAATACGACTCACTATAGGGCGCCGGGAATTCGTCGACTGGATCCGGTACCGAGGAGATCTGCC
 GCC**CGATCGCC**

ATGTCCACCCCTCCGTTGGCCGCGTCGGGGATGGCGCCCGGGCCCTTCGCCGGGCCCCAGGCTCAGCAGG
 CCGCCCGGAAGTCAACACGGCGTCGTCGTGCCGCATCGGGCAGGAGACAGTGCAGGACATCGTGTACCG
 CACCATGGAGATCTTCCAGCTCCTGAGGAACATGCAGTGCACAAATGGTGTCACTTACCACACTGGAACA
 TATCAAGACCGGTTAACAAAGCTACAGGATAATCTTCGCCAACTTCAGTTCCTTCAGGAAGCTGAGAT
 TGGTATATGACAAATGCAATGAAAAGTGTGGTGGGATGGATCCCATTCCAGTCGAGCAACTATTCCATA
 TGTGGAAGAAGATGGCTCAAAGAATGATGATCGGGCTGGCCACCTCGTTTTGCTAGTGAAGAGAGGCGA
 GAAATTGCTGAAGTAAATAAAAACTCAAACAGAAGAATCAACAGCTGAAACAAATTATGGATCAATTAC
 GAAATCTCATCTGGGATATAAATGCCATGTTGGCAATGAGGAAC

ACGCGTACGCGGCCGCTCGAGCAGAACTCATCTCAGAAGAGGATCTGGCAGCAAATGATATCCTGGATT
 ACAAGGATGACGACGATAAGGTTTAA

Protein Sequence: >RC202305 protein sequence
 Red=Cloning site Green=Tags(s)

MSTPPLAASGMAPGPFAGPQAQQAAREVNTASLCRIGQETVQDIVYRTMEIFQLLRNMQLPNGVYHTGT
 YQDRLTKLQDNLRQLSVLFRKLRVYDKCNENCGGMDPIPVEQLIPYVEEDGSKNDDRAGPPRFASEERR
 EIAEVNKKLKQKNQQLKQIMDQLRNL IWDINAMLAMRN

TRTRPLEQKLISEEDLAANDILDYKDDDDKV

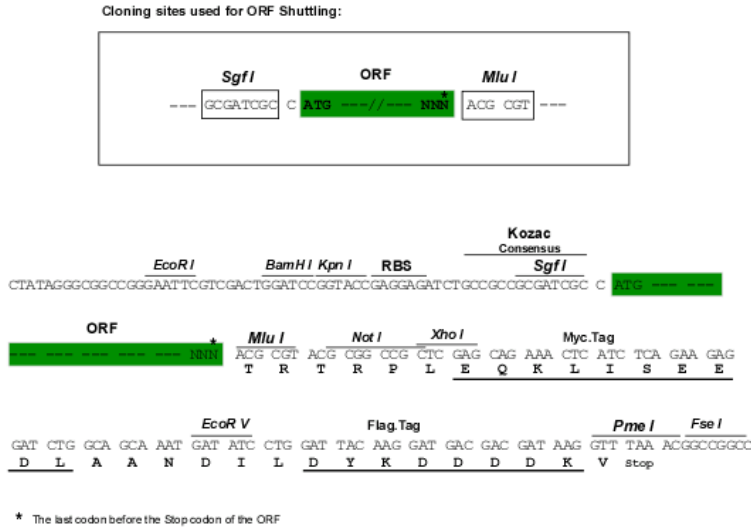
Chromatograms: https://cdn.origene.com/chromatograms/mk6302_b05.zip



[View online »](#)

Restriction Sites: SgfI-MluI

Cloning Scheme:



ACCN: NM_080651

ORF Size: 534 bp

OTI Disclaimer: The molecular sequence of this clone aligns with the gene accession number as a point of reference only. However, individual transcript sequences of the same gene can differ through naturally occurring variations (e.g. polymorphisms), each with its own valid existence. This clone is substantially in agreement with the reference, but a complete review of all prevailing variants is recommended prior to use. [More info](#)

OTI Annotation: This clone was engineered to express the complete ORF with an expression tag. Expression varies depending on the nature of the gene.

Components: The ORF clone is ion-exchange column purified and shipped in a 2D barcoded Matrix tube containing 10ug of transfection-ready, dried plasmid DNA (reconstitute with 100 ul of water).

Reconstitution Method:

1. Centrifuge at 5,000xg for 5min.
2. Carefully open the tube and add 100ul of sterile water to dissolve the DNA.
3. Close the tube and incubate for 10 minutes at room temperature.
4. Briefly vortex the tube and then do a quick spin (less than 5000xg) to concentrate the liquid at the bottom.
5. Store the suspended plasmid at -20°C. The DNA is stable for at least one year from date of shipping when stored at -20°C.

Note: Plasmids are not sterile. For experiments where strict sterility is required, filtration with 0.22um filter is required.

RefSeq: [NM_080651.4](#)

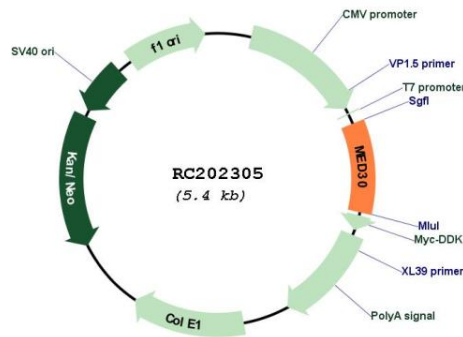
RefSeq Size: 994 bp

RefSeq ORF: 537 bp

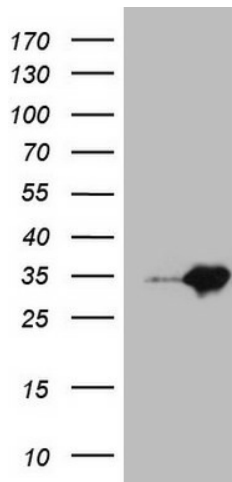
Locus ID: 90390
UniProt ID: [Q96HR3](#)
Cytogenetics: 8q24.11
Protein Families: Druggable Genome, Transcription Factors
MW: 20.3 kDa

Gene Summary: The multiprotein TRAP/Mediator complex facilitates gene expression through a wide variety of transcriptional activators. MED30 is a component of this complex that appears to be metazoan specific (Baek et al., 2002 [PubMed 11909976]).[supplied by OMIM, Nov 2010]

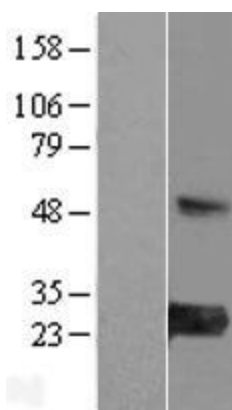
Product images:



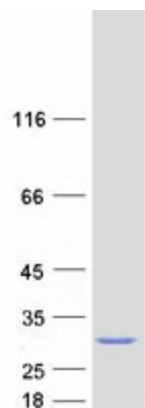
Circular map for RC202305



HEK293T cells were transfected with the pCMV6-ENTRY control (Cat# [PS100001], Left lane) or pCMV6-ENTRY MED30 (Cat# RC202305, Right lane) cDNA for 48 hrs and lysed. Equivalent amounts of cell lysates (5 ug per lane) were separated by SDS-PAGE and immunoblotted with anti-MED30 (Cat# [TA808041])(1:2000). Positive lysates [LY409121] (100ug) and [LC409121] (20ug) can be purchased separately from OriGene.



Western blot validation of overexpression lysate (Cat# [LY409121]) using anti-DDK antibody (Cat# [TA50011-100]). Left: Cell lysates from untransfected HEK293T cells; Right: Cell lysates from HEK293T cells transfected with RC202305 using transfection reagent MegaTran 2.0 (Cat# [TT210002]).



Coomassie blue staining of purified MED30 protein (Cat# [TP302305]). The protein was produced from HEK293T cells transfected with MED30 cDNA clone (Cat# RC202305) using MegaTran 2.0 (Cat# [TT210002]).