

Product datasheet for RC202304

PRRT2 (NM_145239) Human Tagged ORF Clone

Product data:

Product Type:	Expression Plasmids
Product Name:	PRRT2 (NM_145239) Human Tagged ORF Clone
Tag:	Myc-DDK
Symbol:	PRRT2
Synonyms:	BFIC2; BFIS2; DSPB3; DYT10; EKD1; FICCA; ICCA; IFITMD1; PKC
Mammalian Cell Selection:	Neomycin
Vector:	pCMV6-Entry (PS100001)
E. coli Selection:	Kanamycin (25 ug/mL)
ORF Nucleotide Sequence:	>RC202304 representing NM_145239. Blue=ORF Red=Cloning site Green=Tag(s)

```
GCTCGTTTGTGAACCGTCAGAATTTGTAAACGACTACTATAGGGCGCCGGGAATTCGTCGACTG
GATCCGGTACCGAGGAGATCTGCCGCCGCGATCGCC
ATGGCAGCCAGCAGCTCTGAGATCTCTGAGATGAAGGGGTTGAGGAGAGTCCCAAGTTCCAGGCGAA
GGGCTGGCCATTCTGAAGCTGAACTGGCCCTCCCAGGTCCTAGCAGGGGTACCAGACCAGCCAGAG
GCCCCGAGCCAGGTCCAAACACTGCGGCCCTGTGGACTCAGGGCCCAAGGCTGGGTGGCTCCA
GAAACCACAGAGACCCCGGCTGGGGCTCAGAAACAGCCAGGCCACAGACCTCAGCTTAAGCCCAGGA
GGGAATCAAAGGCCAACTGCAGCCCCGAAGCCATGCCAAGAAACAGTGTCAAACCAGAAGTGAGC
AAAGAGGCCACTGCAGACCAGGGTCCAGGCTGGAGTCTGCAGCCCCACCTGAACCAGCCCCAGAGCCT
GCTCCCCAACAGACCCCGGCCAGATTCCCAGCCTACCCCAAGCCAGCCCTTCAACCAGAGCTCCCT
ACCCAGGAGGACCCACCCCTGAGATTCTGTCTGAGAGTGTAGGGGAAAAGCAAGAGAATGGGGCAGTG
GTGCCCTGCAGGCTGGTATGGGGAAGAGGGCCAGCCCTGAGCCTCACTCACCACCCTCAAAAAA
TCCCCCAGCCAATGGGCCCCCCCCGAGTGTGCAGCAGCTGGTTGAGGAGGATCGAATGAGAAGG
GCACACAGTGGGCATCCAGGATCTCCCCAGGTAGCCTGAGCCGCCACCCAGCTCCAGCTGGCAGGT
CCTGGGGTGGAGGGGGTGAAGGCACCCAGAAACCTCGGGACTACATCATCTTGCCATCCTGTCTCTGC
TTCTGCCCCATGTGCCCTGTCAACATCGTGGCCTTCGCTTATGCTGTATGTCCCGGAACAGCCTGCAG
CAGGGGACGTGGACGGGGCCAGCGTCTGGCCGGGTAGCCAAGCTCTTAAGCATCGTGGCGCTGGTG
GGGGAGTCTCATCATCATCGCCTCCTGCGTCACTCAACTTAGGCGTGTATAAG
ACGCGTACGCGGCCGCTCGAGCAGAACTCATCTCAGAAGAGGATCTGGCAGCAAATGATATCCTGGAT
TACAAGGATGACGACGATAAGGTTTAAACGGCCGGC
```



[View online »](#)

Protein Sequence: >Peptide sequence encoded by RC202304
 Blue=ORF Red=Cloning site Green=Tag(s)

MAASSSEISEMKGVEESPKVPGEGPGHSEAETGPPQVLAVDPDQPEAPQPGPNTTAAPVDSGPKAGLAP
 ETTETPAGASETAQATDL LSLSPGGESKANCSPEDPCQETVSKPEVSKEATADQGSRL ESAAPPEPAPEP
 APQDPDRPDSQPTPKPALQPELPTQEDPTPEILSESVGEKQENGAVVPLQAGDGEEGPAPEPHSPSSKK
 SPPANGAPPRVLQQLVEEDRMRAHSGHPGSPRGSLSRHPSSQLAGPGVEGGETQKPRDYIILAILSC
 FCPMWPVNI VAFAYAVMSRNSLQQGDVDGAQRLGRVAKLLSIVALVGGVLI I I I ASCVINLGVYK
 TRTRPLEQKLISEEDLAANDILDYKDDDDKV

Restriction Sites: Sgfl-MluI

Cloning Scheme:

Cloning sites used for ORF Shuttling:



* The last codon before the Stop codon of the ORF

ACCN: NM_145239

ORF Size: 1020 bp

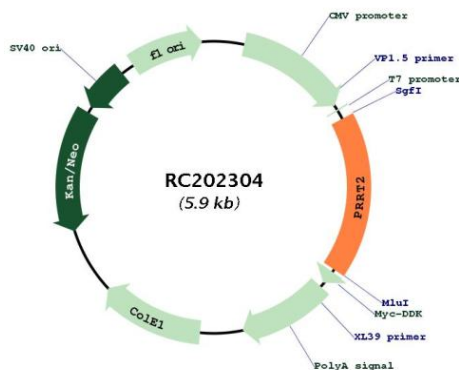
OTI Disclaimer: Due to the inherent nature of this plasmid, standard methods to replicate additional amounts of DNA in E. coli are highly likely to result in mutations and/or rearrangements. Therefore, OriGene does not guarantee the capability to replicate this plasmid DNA. Additional amounts of DNA can be purchased from OriGene with batch-specific, full-sequence verification at a reduced cost. Please contact our customer care team at custsupport@origene.com or by calling 301.340.3188 option 3 for pricing and delivery.

The molecular sequence of this clone aligns with the gene accession number as a point of reference only. However, individual transcript sequences of the same gene can differ through naturally occurring variations (e.g. polymorphisms), each with its own valid existence. This clone is substantially in agreement with the reference, but a complete review of all prevailing variants is recommended prior to use. [More info](#)

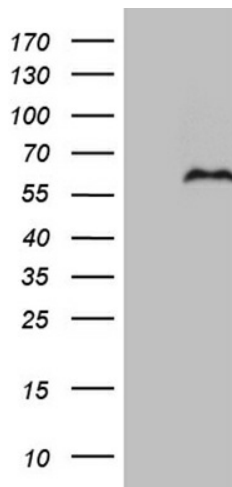
OTI Annotation: This clone was engineered to express the complete ORF with an expression tag. Expression varies depending on the nature of the gene.

Components:	The ORF clone is ion-exchange column purified and shipped in a 2D barcoded Matrix tube containing 10ug of transfection-ready, dried plasmid DNA (reconstitute with 100 ul of water).
Reconstitution Method:	<ol style="list-style-type: none"> 1. Centrifuge at 5,000xg for 5min. 2. Carefully open the tube and add 100ul of sterile water to dissolve the DNA. 3. Close the tube and incubate for 10 minutes at room temperature. 4. Briefly vortex the tube and then do a quick spin (less than 5000xg) to concentrate the liquid at the bottom. 5. Store the suspended plasmid at -20°C. The DNA is stable for at least one year from date of shipping when stored at -20°C.
RefSeq:	NM_145239.2
RefSeq Size:	2606 bp
RefSeq ORF:	1023 bp
Locus ID:	112476
UniProt ID:	Q7Z6L0
Cytogenetics:	16p11.2
Protein Families:	Transmembrane
MW:	34.9 kDa
Gene Summary:	This gene encodes a transmembrane protein containing a proline-rich domain in its N-terminal half. Studies in mice suggest that it is predominantly expressed in brain and spinal cord in embryonic and postnatal stages. Mutations in this gene are associated with episodic kinesigenic dyskinesia-1. Alternatively spliced transcript variants encoding different isoforms have been found for this gene. [provided by RefSeq, Jan 2012]

Product images:



Circular map for RC202304



HEK293T cells were transfected with the pCMV6-ENTRY control (Cat# [PS100001], Left lane) or pCMV6-ENTRY PRRT2 (Cat# RC202304, Right lane) cDNA for 48 hrs and lysed. Equivalent amounts of cell lysates (5 ug per lane) were separated by SDS-PAGE and immunoblotted with anti-PRRT2 (Cat# [TA809867])(1:500).