

## Product datasheet for **RC202303**

### PX19 (PRELID1) (NM\_013237) Human Tagged ORF Clone

#### Product data:

|                           |   |
|---------------------------|---|
| Product Type:             | Expression Plasmids   |
| Product Name:             | PX19 (PRELID1) (NM_013237) Human Tagged ORF Clone                 |
| Tag:                      | Myc-DDK   |
| Symbol:                   | PX19  |
| Synonyms:                 | CGI-106; PRELI; PX19; SBBI12                                      |
| Mammalian Cell Selection: | Neomycin  |
| Vector:                   | pCMV6-Entry (PS100001)  |
| E. coli Selection:        | Kanamycin (25 ug/mL)  |
| ORF Nucleotide Sequence:  | >RC202303 ORF sequence<br>Red=Cloning site Blue=ORF Green=Tags(s) |

TTTTGTAATACGACTCACTATAGGGCGGCCGGAATTCGTCGACTGGATCCGGTACCGAGGAGATCTGCC  
GCC**CGATCGCC**

ATGGTGAAGTATTTCTGGGCCAGAGCGTGCTCCGGAGTTCTGGGACCAAGTGTTCCGCCCTTCTGGC  
AGCGGTACCCGAATCCCTATAGCAAACATGTCTTGACGGAAGACATAGTACACCGGGAGGTGACCCCTGA  
CCAGAACTGCTGTCCCAGGACTCCTGACCAAGACCAACAGGATGCCACGCTGGGCCGAGCGACTATT  
CCTGCCAATGTTGCTCACTCGGTGTACGTCTGGAGGACTCTATTGTGGACCCACAGAATCAGACCATGA  
CTACCTTCACCTGGAACATCAACCACGCCCGGCTGATGGTGGTGGAGGAACGATGTGTTACTGTGTGAA  
CTCTGACAACAGTGGCTGGACTGAAATCCGCCGGGAAGCCTGGGTCTCCTCTAGCTTATTTGGTGTCTCC  
AGAGCTGTCCAGGAATTTGGTCTTGCCCGTTCAAAGCAACGTGACCAAGACTATGAAGGGTTTTGAAT  
ATATCTTGCTAAGCTGCAAGGCGAGGCCCTTCCAAAACACTTGTGAGACAGCCAAGGAAGCCAAGGA  
GAAGGCAAAGGAGACGGCACTGGCAGCTACAGAGAAGGCCAAGGACCTCGCCAGCAAGGCCGCCACCAAG  
AAGCAGCAGCAGCAGCAACAGTTTG

**ACGCGT**ACGCGGCCGCTCGAGCAGAACTCATCTCAGAAGAGGATCTGGCAGCAAATGATATCTGGATT  
ACAAGGATGACGACGATAAGGTTTAA



[View online »](#)

**Protein Sequence:** >RC202303 protein sequence  
 Red=Cloning site Green=Tags(s)

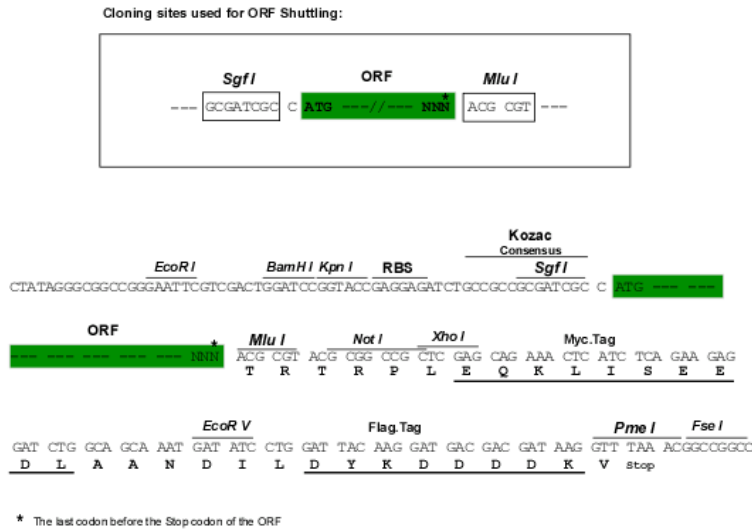
MVKYFLGQSVLRSSWDQVFAAFWQRYPNPYSKHVLTEDI VHREVTDPQKLLSRLLTKTNMRPWAERLF  
 PANVAHSVYVLEDSIVDPQNTMTTFTWNINHARLMVVEERCVCVNSDNGWTEIRREAWYSSSLFGVS  
 RAVQEFGLARFKSNVTKTMKGFYILAKLQGEAPSKTLVETAKEAKEKAKETALAATEKAKDLASKAATK  
 KQQQQQFV

TRTRPLEQKLISEEDLAANDILDYKDDDDKV

**Chromatograms:** [https://cdn.origene.com/chromatograms/mk6303\\_f03.zip](https://cdn.origene.com/chromatograms/mk6303_f03.zip)

**Restriction Sites:** SgfI-MluI

**Cloning Scheme:**



**ACCN:** NM\_013237

**ORF Size:** 657 bp

**OTI Disclaimer:** The molecular sequence of this clone aligns with the gene accession number as a point of reference only. However, individual transcript sequences of the same gene can differ through naturally occurring variations (e.g. polymorphisms), each with its own valid existence. This clone is substantially in agreement with the reference, but a complete review of all prevailing variants is recommended prior to use. [More info](#)

**OTI Annotation:** This clone was engineered to express the complete ORF with an expression tag. Expression varies depending on the nature of the gene.

**Components:** The ORF clone is ion-exchange column purified and shipped in a 2D barcoded Matrix tube containing 10ug of transfection-ready, dried plasmid DNA (reconstitute with 100 ul of water).

**Reconstitution Method:**

1. Centrifuge at 5,000xg for 5min.
2. Carefully open the tube and add 100ul of sterile water to dissolve the DNA.
3. Close the tube and incubate for 10 minutes at room temperature.
4. Briefly vortex the tube and then do a quick spin (less than 5000xg) to concentrate the liquid at the bottom.
5. Store the suspended plasmid at -20°C. The DNA is stable for at least one year from date of shipping when stored at -20°C.

**RefSeq:** [NM\\_013237.2](#), [NP\\_037369.1](#)

**RefSeq Size:** 1288 bp

**RefSeq ORF:** 660 bp

**Locus ID:** 27166

**UniProt ID:** [Q9Y255](#)

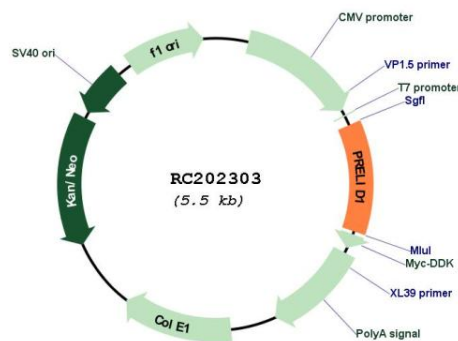
**Cytogenetics:** 5q35.3

**Domains:** MSF1

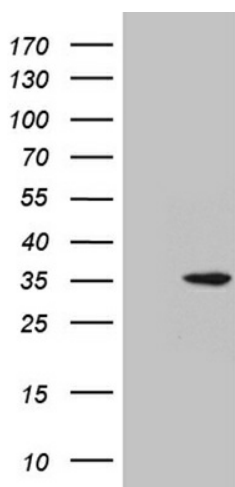
**MW:** 25.2 kDa

**Gene Summary:** This gene encodes a member of the late embryogenesis abundant motif-containing protein family. The encoded protein is localized to mitochondria and may function as a cytoprotectant by regulating cell death and differentiation. Alternative splicing results in multiple transcript variants encoding different isoforms. Several related pseudogenes have been identified. [provided by RefSeq, Nov 2012]

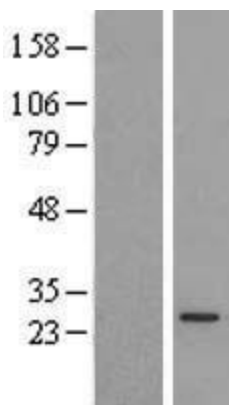
### Product images:



Circular map for RC202303



HEK293T cells were transfected with the pCMV6-ENTRY control (Cat# [PS100001], Left lane) or pCMV6-ENTRY PRELID1 (Cat# RC202303, Right lane) cDNA for 48 hrs and lysed. Equivalent amounts of cell lysates (5 ug per lane) were separated by SDS-PAGE and immunoblotted with anti-PRELID1 antibody (Cat# [TA811047]). Positive lysates [LY415724] (100ug) and [LC415724] (20ug) can be purchased separately from OriGene.



Western blot validation of overexpression lysate (Cat# [LY415724]) using anti-DDK antibody (Cat# [TA50011-100]). Left: Cell lysates from untransfected HEK293T cells; Right: Cell lysates from HEK293T cells transfected with RC202303 using transfection reagent MegaTran 2.0 (Cat# [TT210002]).