

Product datasheet for RC202296

Gemin 6 (GEMIN6) (NM_024775) Human Tagged ORF Clone

Product data:

Product Type: Expression Plasmids
 Product Name: Gemin 6 (GEMIN6) (NM_024775) Human Tagged ORF Clone
 Tag: Myc-DDK
 Symbol: Gemin 6
 Mammalian Cell Selection: Neomycin
 Vector: pCMV6-Entry (PS100001)
 E. coli Selection: Kanamycin (25 ug/mL)
 ORF Nucleotide Sequence: >RC202296 ORF sequence
 Red=Cloning site Blue=ORF Green=Tags(s)

TTTTGTAATACGACTCACTATAGGGCGGCCGGAATTCGTCGACTGGATCCGGTACCGAGGAGATCTGCCGCCCGATCGCC

ATGAGTGAATGGATGAAGAAAGGCCCTTAGAATGGCAAGATTACATTTACAAAGAGGTCCGAGTGACAGCCAGTGAGAAGAATGAGTATAAAGGATGGGTTTTAACTACAGACCCAGTCTCTGCCAATATTGTCCTTGTGAATTCCTTGAAGATGGCAGCATGTCTGTGACCGGAATTATGGGACATGCTGTGCAGACTGTTGAACTATGAATGAAGGGGACCATAGAGTGAGGGAGAAGCTGATGCATTTGTTACGTCTGGAGACTGCAAAGCATACAGCCCAGAGGATCTGGAAGAGAGAAAGAAGCCTAAAGAAATGGCTTGAGAAGAACCACATCCCCACTCTGAACAGGGAGACGCTCCAAGGACTCTCTGTGTGGCTGGGGTCTGACTATAGACCCACCACATATGATCCAGAAAATTGCAGCAGCTCTAATGAGATTATTCTGTGCGGTGTTCCAGGATCTTATTGAAGGACATCTTACAGCTTCCCAA

ACGCGTACGCGGCCGCTCGAGCAGAACTCATCTCAGAAGAGGATCTGGCAGCAAATGATATCCTGGATTACAAGGATGACGACGATAAGGTTTAA

Protein Sequence: >RC202296 protein sequence
 Red=Cloning site Green=Tags(s)

MSEWMKKGPLEWQDYIYKEVRVTASEKNEYKGVLTDDPVSANIVLVNFLEDGSM SVTGIMGHAVQTVETMNEGDHRVREKLMHLFTSGDCKAYSPEDLEERKNLSKKWLEKNHIPITEQGDAPRTL CVAGVLTIDPPYPENCSSSNEIILSRVQDLIEGHLTASQ

TRTRPLEQKLI SEEDLAANDILDYKDDDDKV

Chromatograms: https://cdn.origene.com/chromatograms/mk6304_d06.zip

Restriction Sites: SgfI-MluI



[View online »](#)

Cloning Scheme:


ACCN: NM_024775

ORF Size: 501 bp

OTI Disclaimer: The molecular sequence of this clone aligns with the gene accession number as a point of reference only. However, individual transcript sequences of the same gene can differ through naturally occurring variations (e.g. polymorphisms), each with its own valid existence. This clone is substantially in agreement with the reference, but a complete review of all prevailing variants is recommended prior to use. [More info](#)

OTI Annotation: This clone was engineered to express the complete ORF with an expression tag. Expression varies depending on the nature of the gene.

Components: The ORF clone is ion-exchange column purified and shipped in a 2D barcoded Matrix tube containing 10ug of transfection-ready, dried plasmid DNA (reconstitute with 100 ul of water).

Reconstitution Method:

1. Centrifuge at 5,000xg for 5min.
2. Carefully open the tube and add 100ul of sterile water to dissolve the DNA.
3. Close the tube and incubate for 10 minutes at room temperature.
4. Briefly vortex the tube and then do a quick spin (less than 5000xg) to concentrate the liquid at the bottom.
5. Store the suspended plasmid at -20°C. The DNA is stable for at least one year from date of shipping when stored at -20°C.

RefSeq: [NM_024775.8](#)

RefSeq Size: 705 bp

RefSeq ORF: 504 bp

Locus ID: 79833

UniProt ID: [Q8WXD5](#)

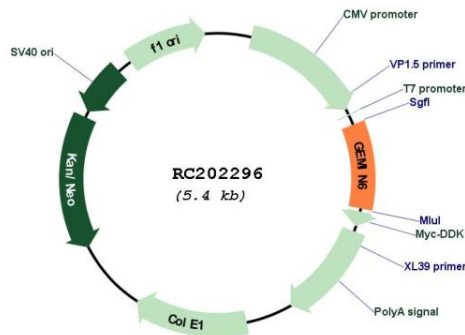
Cytogenetics: 2p22.1

Protein Families: Druggable Genome, Stem cell - Pluripotency

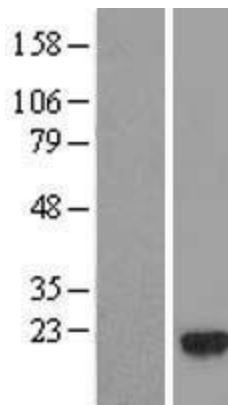
MW: 18.9 kDa

Gene Summary: GEMIN6 is part of a large macromolecular complex, localized to both the cytoplasm and the nucleus, that plays a role in the cytoplasmic assembly of small nuclear ribonucleoproteins (snRNPs). Other members of this complex include SMN (MIM 600354), GEMIN2 (SIP1; MIM 602595), GEMIN3 (DDX20; MIM 606168), GEMIN4 (MIM 606969), and GEMIN5 (MIM 607005). [supplied by OMIM, Jul 2002]

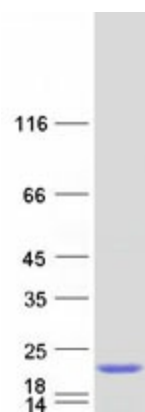
Product images:



Circular map for RC202296



Western blot validation of overexpression lysate (Cat# [LY411066]) using anti-DDK antibody (Cat# [TA50011-100]). Left: Cell lysates from untransfected HEK293T cells; Right: Cell lysates from HEK293T cells transfected with RC202296 using transfection reagent MegaTran 2.0 (Cat# [TT210002]).



Coomassie blue staining of purified GEMIN6 protein (Cat# [TP302296]). The protein was produced from HEK293T cells transfected with GEMIN6 cDNA clone (Cat# RC202296) using MegaTran 2.0 (Cat# [TT210002]).