

Product datasheet for RC202292

PSMD6 (NM_014814) Human Tagged ORF Clone

Product data:

Product Type:	Expression Plasmids
Product Name:	PSMD6 (NM_014814) Human Tagged ORF Clone
Tag:	Myc-DDK
Symbol:	PSMD6
Synonyms:	p42A; p44S10; Rpn7; S10; SGA-113M
Mammalian Cell Selection:	Neomycin
Vector:	pCMV6-Entry (PS100001)
E. coli Selection:	Kanamycin (25 ug/mL)
ORF Nucleotide Sequence:	>RC202292 representing NM_014814 Red=Cloning site Blue=ORF Green=Tags(s)

TTTTGTAATACGACTCACTATAGGGCGGCCGGAATTCGTCGACTGGATCCGGTACCGAGGAGATCTGCC
GCC**CGATCGCC**

ATGCCGCTGGAGAACCTGGAGGAGGAGGGTCTGCCAAGAACCCCGACTTGCATCGCGCAGCTGCGCT
TCCTGCTCAGCCTGCCCGAGCACCGGAGACGCTGCCGTGCGGACGAGCTGATGGCGGCCGTCGCGA
TAACAACATGGCTCCTTACTATGAAGCCTTGTGCAAATCCCTCGACTGGCAGATAGACGTGGACCTACTC
AATAAAATGAAGAAGGCAAATGAAGATGAGTTGAAGCGTTTGGATGAGGAGCTGGAAGATGCAGAGAAGA
ATCTAGGAGAGAGCGAAATTCGCGATGCAATGATGGCAAAGCCGAGTACCTCTGCCGGATAGGTGACAA
AGAGGGAGCTCTGACAGCCTTTCGCAAGACATATGACAAAACGTGGCCCTGGGTACCGATTGGATATT
GTATTCTATCTCCTTAGGATTGGCTATTTTATATGGATAATGATCTCATCACACGAAACACAGAAAAGG
CCAAAAGCTTAATAGAAGAAGGAGGAGACTGGGACAGGAGAAACCGCCTAAAAGTGTATCAGGGTCTTTA
TTGTGTGGCTATTCGTGATTTCAAACAGGCAGCTGAACTTCTCTTGACACTGTTTCAACATTTACATCC
TATGAACTCATGGATTATAAACATTTGTGACTTATACTGTCTATGTCAGTATGATTGCCTTAGAAAAGAC
CAGATCTCAGGAAAAGGTCATTAAGGAGCAGAGATTCTGAAGTGTGCACAGTCTCCAGCAGTTCCG
GCAGTATCTGTTTCACTCTATGAATGCCGTTACTCTGTTTTCTCCAATCATTAGCGGTTGTGGAACAG
GAAATGAAAAGGACTGGCTTTTTGCCCTCATTATCGATACTATGTAAGAGAAAAGAAATTCATGCAT
ACAGTCAGCTGCTGGAATCATATAGGTCAATTAACCTTGCTATATGGCAGAAGCGTTTGGTGTGGTGT
GGAATTCATTGATCAGGAACTGTCCAGGTTTATTGCTGCCGGGAGACTACACTGCAAAAATAGATAAAGTG
AATGAAATAGTAGAAACCAACAGACCTGATAGCAAGAACTGGCAGTACCAAGAACTATCAAGAAAGGAG
ATCTGCTACTAAACAGAGTTCAAAAACCTTCCAGAGTAATTAATATG

ACGCGTACGCGGCCGCTCGAGCAGAAAACATCTCAGAAGAGGATCTGGCAGCAAATGATATCCTGGATT
ACAAGGATGACGACGATAAGGTTTAA



[View online »](#)

Protein Sequence: >RC202292 representing NM_014814
Red=Cloning site Green=Tags(s)

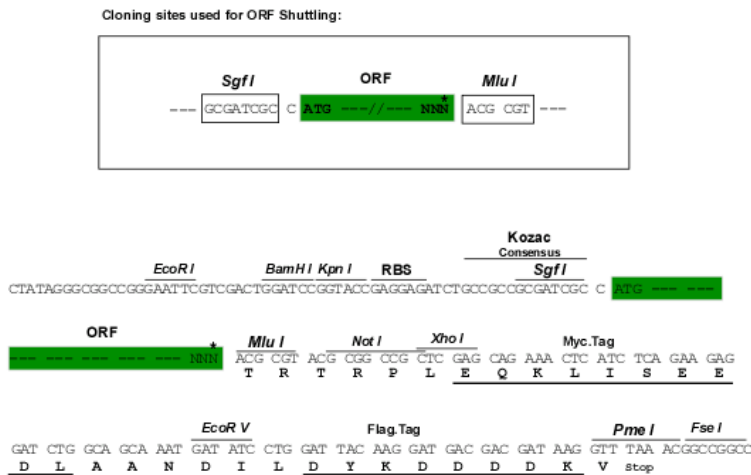
MPLENLEEEGLPKNPDLRIAQLRFLLSLPEHRGDAAVRDELMAAVRDNNMAPYYEALCKSLDWQIDVDLL
 NKMKKANEDLKRLEDELEDAEKNLGESEIRDAMMAKAEYLCRIGDKEGALTAFRKTYDKTVALGHRDLI
 VFYLLRIGLFYMDNDLITRNTAKAKSLIEEGDWDRNRNLKVVYQGLYCVAIRDFKQAAELFDTVSTFTS
 YELMDYKTFVYTYVYVSMIALERPDLREKVIKGAIELEVLHSLPAVRQYLFSLYECRYSVFFQSLAVVEQ
 EMKKDWLFAPHYRYVREMRIHAYSQLLSEYRSLTLGYMAEAFGVGVEFIDQELSRFIAAGRLHCKIDKV
 NEIVETNRPDSKNWQYQETIKKGDLLLNRVQKLSRVINM

TRTRPLEQKLISEEDLAANDILDYKDDDDKV

Chromatograms: https://cdn.origene.com/chromatograms/mg2876_a06.zip

Restriction Sites: SgfI-MluI

Cloning Scheme:



* The last codon before the Stop codon of the ORF

ACCN: NM_014814

ORF Size: 1167 bp

OTI Disclaimer: The molecular sequence of this clone aligns with the gene accession number as a point of reference only. However, individual transcript sequences of the same gene can differ through naturally occurring variations (e.g. polymorphisms), each with its own valid existence. This clone is substantially in agreement with the reference, but a complete review of all prevailing variants is recommended prior to use. [More info](#)

OTI Annotation: This clone was engineered to express the complete ORF with an expression tag. Expression varies depending on the nature of the gene.

Components: The ORF clone is ion-exchange column purified and shipped in a 2D barcoded Matrix tube containing 10ug of transfection-ready, dried plasmid DNA (reconstitute with 100 ul of water).

Reconstitution Method:

1. Centrifuge at 5,000xg for 5min.
2. Carefully open the tube and add 100ul of sterile water to dissolve the DNA.
3. Close the tube and incubate for 10 minutes at room temperature.
4. Briefly vortex the tube and then do a quick spin (less than 5000xg) to concentrate the liquid at the bottom.
5. Store the suspended plasmid at -20°C. The DNA is stable for at least one year from date of shipping when stored at -20°C.

Note: Plasmids are not sterile. For experiments where strict sterility is required, filtration with 0.22um filter is required.

RefSeq: [NM_014814.3](#)

RefSeq Size: 1308 bp

RefSeq ORF: 1170 bp

Locus ID: 9861

UniProt ID: [Q15008](#)

Cytogenetics: 3p14.1

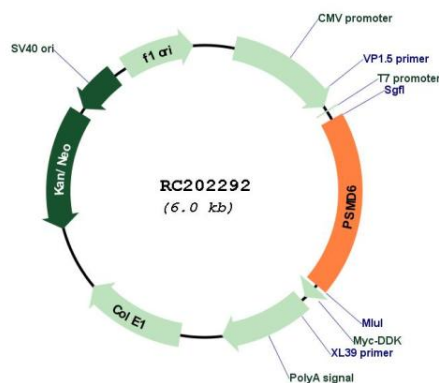
Domains: PCI

Protein Pathways: Proteasome

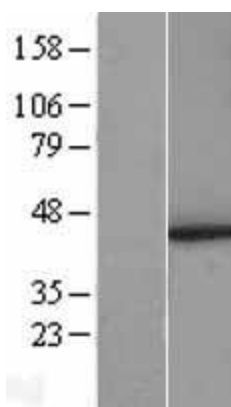
MW: 45.4 kDa

Gene Summary: This gene encodes a member of the protease subunit S10 family. The encoded protein is a subunit of the 26S proteasome which colocalizes with DNA damage foci and is involved in the ATP-dependent degradation of ubiquitinated proteins. Alternative splicing results in multiple transcript variants [provided by RefSeq, Nov 2012]

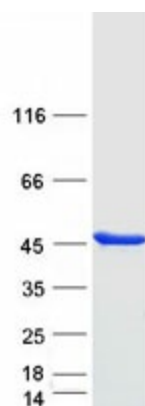
Product images:



Circular map for RC202292



Western blot validation of overexpression lysate (Cat# [LY415023]) using anti-DDK antibody (Cat# [TA50011-100]). Left: Cell lysates from untransfected HEK293T cells; Right: Cell lysates from HEK293T cells transfected with RC202292 using transfection reagent MegaTran 2.0 (Cat# [TT210002]).



Coomassie blue staining of purified PSMD6 protein (Cat# [TP302292]). The protein was produced from HEK293T cells transfected with PSMD6 cDNA clone (Cat# RC202292) using MegaTran 2.0 (Cat# [TT210002]).