

## Product datasheet for **RC202291**

### **C16orf9 (FAM234A) (NM\_032039) Human Tagged ORF Clone**

#### **Product data:**

Product Type:	Expression Plasmids
Product Name:	C16orf9 (FAM234A) (NM_032039) Human Tagged ORF Clone
Tag:	Myc-DDK
Symbol:	C16orf9
Synonyms:	C16orf9; gs19; ITFG3
Mammalian Cell Selection:	Neomycin
Vector:	pCMV6-Entry (PS100001)
E. coli Selection:	Kanamycin (25 ug/mL)



[View online »](#)

**ORF Nucleotide Sequence:**

>RC202291 ORF sequence  
 Red=Cloning site Blue=ORF Green=Tags(s)

TTTTGTAATACGACTCACTATAGGGCGGCCGGAATTCGTCGACTGGATCCGGTACCGAGGAGATCTGCC  
 GCC**CGGATCGCC**

ATGTTGGACCACAAGGACTTAGAGGCCGAAATCCACCCCTTGAAAAATGAAGAAAGAAAATCGCAGGAAA  
 ATCTGGGAAATCCATCAAAAAATGAGGATAACGTGAAAAGCGCGCTCCACAGTCCCGGCTCTCCGGTG  
 CCGAGCGCGCGCTTTTTCTTTTATTGTTTCTCTGCCTTTTTGTGGTTCGTCGCTCATTCTGCATC  
 CCGTGTCCAGACCGCGCGCTCACAGCGAATGTGGAGGATAGACTACAGTCCCGCTGTTATCTATGACT  
 TTCTGGCTGTGGATGATAAAACGGGGACAGGATCCAAGATGTTCTTTTTCTTTAAAAACACCAACAG  
 CAGCAACAATTTAGCCGATCCTGTGTGGACGAAGGCTTTTCTCTCCCTGCACCTTTGCAGCTGCTGTG  
 TCGGGGGCAACGGCAGCAGCTCTGGGAGAGACCTGTGGCCCAAGACGTGGCCCTCGTGGAGTGTGCTG  
 TGCCCCAGCCAAGAGGCAGTGAGGCACCTTCTGCCTGCATCCTGGTGGGACAGCCAGTTCTTTTATTGC  
 AGTCAACTTGTTACAGGGGAAACCTGTGGAACACAGCAGCAGCTTCAGCGGGAATGCGTCCATCCTG  
 AGCCCTCTGCTGACGGTGCCTGATGTGGACGGCGATGGGGCCCCAGACCTGCTGGTTCTACCCAGGAGC  
 GGGAGGAGGTTAGTGGCCACCTCTACTCCGGCAGCACCGGGCACCAGATTGGCCTCAGAGGCAGCCTTGG  
 TGTGGACGGGAAAGTGGCTTCTCTTACAGTACCAGGACAGGTGCCACTACATCCTTTCCCTGC  
 GCAAGTCCCTCTGCGGCTGCTCTGTGAAGGTCTCTACGAGAAGGTGACCGGGAGCGCGGCCGTTCA  
 AGAGTGACCCGCACTGGGAGAGCATGCTCAATGCCACCACCCGAGGATGCTTTCCACAGCTCTGGAGC  
 AGTGGCTACCTGATGCATGTCCAGGGAACCGCGGTGCAGATGTGCTTCTGTGGGCTCAGAGGCCCTC  
 GTGCTGTGGACGGCAGGAGCTGACGCTCGCTGGACACCAAGGCAGCCATGCTCTGAGAAAACCCA  
 TCTTCGGCCGCTACAAACCAGACACCTTGCTGTAGCCGTTGAAAACGGAAGTGGCACAGCAGAGAT  
 CCTGTTTTCTGGACCTTGGCACTGGAGCCGCTGTGTAGCCTAGCCCTCCGAGCCTCCCTGGGGTCCA  
 CTGTCCGCCAGCCTGCCACCGCAGACCACCGCTCAGCCTTCTTCTTGGGGCTCCACAGACTGGGGA  
 GCACCAGCAGACGGAGACCGGGAGGCCCGGCACAGCCTGTACATGTTCCACCCACCCTGCCGCGCT  
 GCTGCTGGAGCTGGCAAATGTCTCTACCACATTGTGCCTTTGACGCGCTCCTGTTTGGCCAAGCCGC  
 CACGCCGCTACATCCTTCTGACAGGCCCGGCAGACTCAGAGGCACCCGGCTGGTCTCTGTGATCAAGC  
 ACAAGGTGCGGGACCTTGTCCAAAGCAGAGGGTGGTCCGCTGGGTGAGGTGGCCAGACAGTGACCA  
 AGCCATCAGGGACCGGTTCTCCCGCTGCGGTACCAGAGTGAGGCG

**ACGCGT**ACGCGGCCGCTCGAGCAGAAACTCATCTCAGAAGAGGATCTGGCAGCAAATGATATCCTGGATT  
 ACAAGGATGACGACGATAAGGTTTAA

**Protein Sequence:**

>RC202291 protein sequence  
 Red=Cloning site Green=Tags(s)

MLDHKDLEAEIHPLKNEERKSQENLGNPSKNEDNVKSAPPQSRLSRCRAAFFLSLFLCLFVVFVSVFVI  
 PCPDRPASQRMWRIDYSAVIYDFLAVDDINGDRIQDVLFLYKNTNSSNNFSRSCVDEGFSSPCTFAAAV  
 SGANGSTLWERPVAQDVALVECAVPQPRGSEAPSACILVGRPSSFIAVNLFTGETLWNHSSFSGNASIL  
 SPLLQVPDVGDGAPDLLVLTQEREEVSGHLYSGSTGHQIGLRGSLGVDGESGFLHVTTRTGAHYILFPC  
 ASSLCGCSVKGLYEKVTGSGGPFKSDPHWESMLNATRRMLSHSSGAVRYLMHVPGNAGADVLLVGSEAF  
 VLLDQGELTPRWTPKAAHVLKPKIFGRYKPDTLAVAVENGTGDRQILFLDLGTGAVLCSLALPSLPGGP  
 LSASLPTADHRSAFFFWGLHELGSTSETETGEARHSLYMFHPTLPRVLELANVSTHIVAFDAVLFEPSR  
 HAAYILLTGPADSEAPGLVSVIKHKVRDLVSSRVVRLGEGGPDSDQAIRDRFSRLRYQSEA

**TR**TRPLEQKLISEEDLAANDILDYKDDDDKV

**Chromatograms:**

[https://cdn.origene.com/chromatograms/mk6305\\_c06.zip](https://cdn.origene.com/chromatograms/mk6305_c06.zip)

**Restriction Sites:**

Sgfl-Mlul

**Cloning Scheme:**


**ACCN:** NM\_032039

**ORF Size:** 1656 bp

**OTI Disclaimer:** The molecular sequence of this clone aligns with the gene accession number as a point of reference only. However, individual transcript sequences of the same gene can differ through naturally occurring variations (e.g. polymorphisms), each with its own valid existence. This clone is substantially in agreement with the reference, but a complete review of all prevailing variants is recommended prior to use. [More info](#)

**OTI Annotation:** This clone was engineered to express the complete ORF with an expression tag. Expression varies depending on the nature of the gene.

**Components:** The ORF clone is ion-exchange column purified and shipped in a 2D barcoded Matrix tube containing 10ug of transfection-ready, dried plasmid DNA (reconstitute with 100 ul of water).

**Reconstitution Method:**

1. Centrifuge at 5,000xg for 5min.
2. Carefully open the tube and add 100ul of sterile water to dissolve the DNA.
3. Close the tube and incubate for 10 minutes at room temperature.
4. Briefly vortex the tube and then do a quick spin (less than 5000xg) to concentrate the liquid at the bottom.
5. Store the suspended plasmid at -20°C. The DNA is stable for at least one year from date of shipping when stored at -20°C.

**RefSeq:** [NM\\_032039.4](#)

**RefSeq Size:** 3224 bp

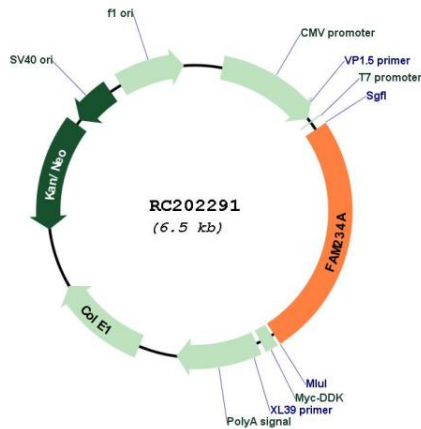
**RefSeq ORF:** 1659 bp

**Locus ID:** 83986

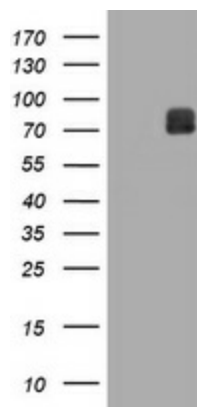
**UniProt ID:** [Q9H0X4](#)

**Cytogenetics:** 16p13.3  
**Domains:** FG-GAP  
**Protein Families:** Transmembrane  
**MW:** 59.7 kDa

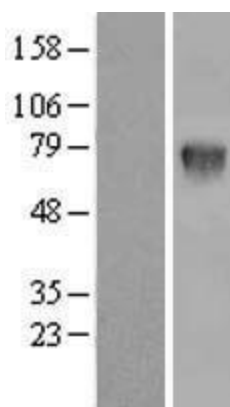
**Product images:**



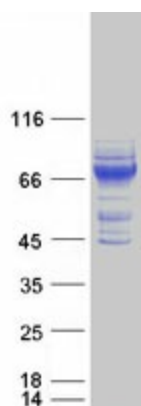
Circular map for RC202291



HEK293T cells were transfected with the pCMV6-ENTRY control (Cat# [PS100001], Left lane) or pCMV6-ENTRY ITFG3 (Cat# RC202291, Right lane) cDNA for 48 hrs and lysed. Equivalent amounts of cell lysates (5 ug per lane) were separated by SDS-PAGE and immunoblotted with anti-ITFG3 (Cat# [TA505567]). Positive lysates [LY410348] (100ug) and [LC410348] (20ug) can be purchased separately from OriGene.



Western blot validation of overexpression lysate (Cat# [LY410348]) using anti-DDK antibody (Cat# [TA50011-100]). Left: Cell lysates from untransfected HEK293T cells; Right: Cell lysates from HEK293T cells transfected with RC202291 using transfection reagent MegaTran 2.0 (Cat# [TT210002]).



Coomassie blue staining of purified FAM234A protein (Cat# [TP302291]). The protein was produced from HEK293T cells transfected with FAM234A cDNA clone (Cat# RC202291) using MegaTran 2.0 (Cat# [TT210002]).