

## Product datasheet for **RC202288**

### TMEM80 (NM\_174940) Human Tagged ORF Clone

#### Product data:

**Product Type:** Expression Plasmids  
**Product Name:** TMEM80 (NM\_174940) Human Tagged ORF Clone  
**Tag:** Myc-DDK  
**Symbol:** TMEM80  
**Mammalian Cell Selection:** Neomycin  
**Vector:** pCMV6-Entry (PS100001)  
**E. coli Selection:** Kanamycin (25 ug/mL)  
**ORF Nucleotide Sequence:** >RC202288 ORF sequence  
 Red=Cloning site Blue=ORF Green=Tags(s)

TTTTGTAATACGACTCACTATAGGGCGGCCGGGAATTCGTCGACTGGATCCGGTACCGAGGAGATCTGCC  
GCC**CGATCGCC**

ATGGCCGAAGGAGCGCGAGCGCGGGCCGAGAGGCTGCCGGATCGCGACGGACCGGGCGGGGCGG  
GGAGAGGATCCTCCACAGTGTCTCTTCAGTCCCTTCAAATGCTGTTTTATCTCAGCGGAACGTA  
CGCCCTGTATTTCTCGCCACGCTCCTGATGATCACGTATAAAGTCAGGTGTTTCAGCTATCCTCACC  
TACCTGGTCTCGATCTTGCTGTCTGTTCTGATGGGATTCTAGAAGCAGTTCGGTTATACCTGGGCA  
CCAGGGCAACCTGACAGAGGCTGAGAGGCCCTGGCCGCCAGCTGGCCCTCAGGCTGGCACC  
CCTCTCTGCCACTTCTGCTTTGGCAGGCCCTAGTGTTGTGGCGGACTGGGCCCTCAGCGCCACGCT  
CTGGCCCTTACGGCCTGGAGGCCCTCCTGCAGGTGTTGCCATCGCGGCCTTACCAGG

**ACGCGT**ACGCGGCCGCTCGAGCAGAACTCATCTCAGAAGAGGATCTGGCAGCAATGATATCCTGGATT  
ACAAGGATGACGACGATAAGGTTTAA

**Protein Sequence:** >RC202288 protein sequence  
 Red=Cloning site Green=Tags(s)

MAEGARARGPRGCRDRDGPAGGAGRGSSTVLSVPLQMLFYLSGTYYALYFLATLLMITYKSQVFSYPHR  
YLVLDLALLFLMGILEAVRLYLGTRGNL TEAERPLAASLALTAGTALLSAHLLWQALVLWADWALSATL  
LALHGLEAVLQVVAIAAFTR

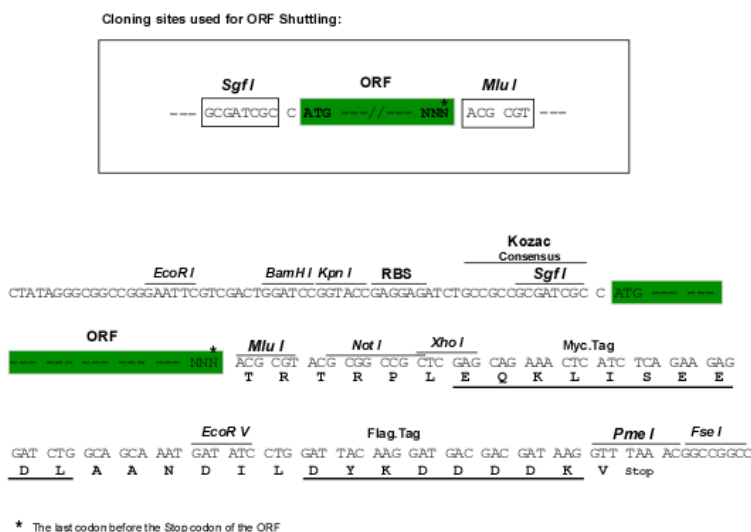
**TR**TRPLEQKLISEEDLAANDILDYKDDDDKV

**Chromatograms:** [https://cdn.origene.com/chromatograms/mk6302\\_f01.zip](https://cdn.origene.com/chromatograms/mk6302_f01.zip)

**Restriction Sites:** SgfI-MluI



[View online >](#)

**Cloning Scheme:**


**ACCN:** NM\_174940

**ORF Size:** 480 bp

**OTI Disclaimer:** The molecular sequence of this clone aligns with the gene accession number as a point of reference only. However, individual transcript sequences of the same gene can differ through naturally occurring variations (e.g. polymorphisms), each with its own valid existence. This clone is substantially in agreement with the reference, but a complete review of all prevailing variants is recommended prior to use. [More info](#)

**OTI Annotation:** This clone was engineered to express the complete ORF with an expression tag. Expression varies depending on the nature of the gene.

**Components:** The ORF clone is ion-exchange column purified and shipped in a 2D barcoded Matrix tube containing 10ug of transfection-ready, dried plasmid DNA (reconstitute with 100 ul of water).

**Reconstitution Method:**

1. Centrifuge at 5,000xg for 5min.
2. Carefully open the tube and add 100ul of sterile water to dissolve the DNA.
3. Close the tube and incubate for 10 minutes at room temperature.
4. Briefly vortex the tube and then do a quick spin (less than 5000xg) to concentrate the liquid at the bottom.
5. Store the suspended plasmid at -20°C. The DNA is stable for at least one year from date of shipping when stored at -20°C.

**RefSeq:** [NM\\_174940.2](#), [NP\\_777600.2](#)

**RefSeq Size:** 1638 bp

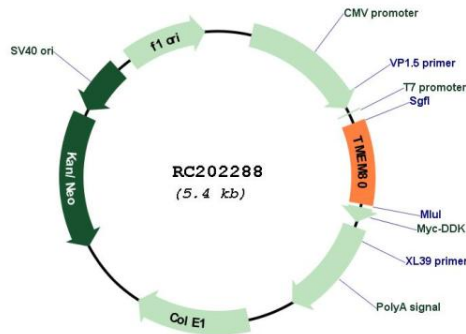
**RefSeq ORF:** 372 bp

**Locus ID:** 283232

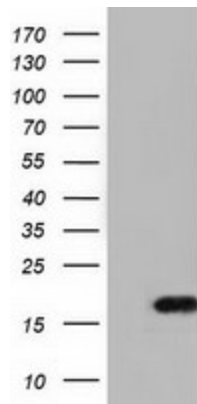
**UniProt ID:** [Q96HE8](#)

**Cytogenetics:** 11p15.5  
**Protein Families:** Transmembrane  
**MW:** 17.3 kDa

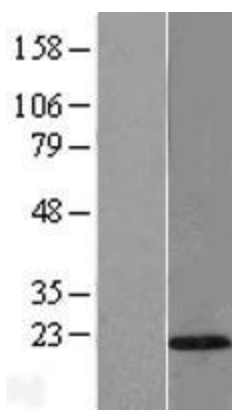
**Product images:**



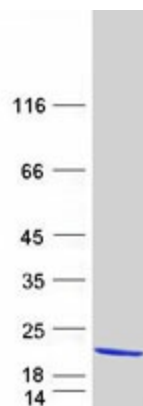
Circular map for RC202288



HEK293T cells were transfected with the pCMV6-ENTRY control (Cat# [PS100001], Left lane) or pCMV6-ENTRY TMEM80 (Cat# RC202288, Right lane) cDNA for 48 hrs and lysed. Equivalent amounts of cell lysates (5 ug per lane) were separated by SDS-PAGE and immunoblotted with anti-TMEM80(Cat# [TA501452]). Positive lysates [LY406341] (100ug) and [LC406341] (20ug) can be purchased separately from OriGene.



Western blot validation of overexpression lysate (Cat# [LY406341]) using anti-DDK antibody (Cat# [TA50011-100]). Left: Cell lysates from untransfected HEK293T cells; Right: Cell lysates from HEK293T cells transfected with RC202288 using transfection reagent MegaTran 2.0 (Cat# [TT210002]).



Coomassie blue staining of purified TMEM80 protein (Cat# [TP302288]). The protein was produced from HEK293T cells transfected with TMEM80 cDNA clone (Cat# RC202288) using MegaTran 2.0 (Cat# [TT210002]).