

## Product datasheet for RC202285

### Apoptosis enhancing nuclease (AEN) (NM\_022767) Human Tagged ORF Clone

#### Product data:

Product Type:	Expression Plasmids
Product Name:	Apoptosis enhancing nuclease (AEN) (NM_022767) Human Tagged ORF Clone
Tag:	Myc-DDK
Symbol:	Apoptosis enhancing nuclease
Synonyms:	ISG20L1; pp12744
Mammalian Cell Selection:	Neomycin
Vector:	pCMV6-Entry (PS100001)
E. coli Selection:	Kanamycin (25 ug/mL)
ORF Nucleotide Sequence:	>RC202285 ORF sequence Red=Cloning site Blue=ORF Green=Tags(s)

TTTTGTAATACGACTCACTATAGGGCGGCCGGAATTCGTCGACTGGATCCGGTACCGAGGAGATCTGCCGCCCGCATCGCC

ATGGTACCCCGGGAGGCCCTGAGTCTGCTCAGTGCCTGTGCCCTTCCCTCACCATCCCAAATGCCAAGG  
ATGTGCTTCGGAAGAGGCACAAGAGAAGGAGCCGACAGCACCAGCGTTTCATGGCCCGGAAGGCCTTGCT  
GCAGGAGCAGGGGCTGCTGAGCATGCCTCCAGAACCAGGGTCTCCCACTGCCACCCCTTTCGGGGCA  
GCGACAGCAACTGAAGCTGCCAGCAGTGGGAAGCAGTGTCTGAGGGCTGGATCTGGCAGTGCCCCATGCA  
GCAGAAGGCCTGCTCCCGGAAAGCCTCAGGGCCCTTGCCAGCAAGTGTGTGGTATCGACTGTGAGAT  
GGTGGGCACGGGACCCCGAGGGCGGTAAGCGAGCTGGCCCGCTGTTCCATTGTGAGCTACCATGGCGAT  
GTCTCTATGACAAGTACATCAGGCCTGAGATGCCATCGCTGACTACCGTACCCGCTGGAGTGGCATCA  
CTCGGCAGCACATGCGCAAGGCTGTCCCTTCCAGGTGGCCAGAAAGAGATCCTTAAGCTCCTGAAGGG  
CAAGGTGGTGGTGGGACGCGCTGCACAACGACTTCCAGGCGCTCAAGTATGTCCACCCTCGGAGCCAG  
ACCCGGGATACCACCTATGTCCAACTTCTCAGCGAGCCCGGCTCCACCCCGGCCCCGGTCTCTC  
TAAAGGACCTGGCCCTGCAGTGTCTGCACAAGAAGATCCAGGTGGCCAGCACGGGCACTCATCAGTAGA  
AGATGCCACGACGCCATGGAGCTCTACCGCTGGTGGAGGTGCAGTGGGAACAGCAGGAGGCCCGCAGC  
CTCTGGACCTGCCCGAGGACAGAGAACCTGACAGCAGCACAGACATGGAACAGTACATGGAGACCAGT  
ACTGCCCCGATGACCTGGCCACGGCAGCAGAGGAGGCCAGGGAGGCACAGGACAGAAGGAAT

ACGCGTACGCGGCCGCTCGAGCAGAAACTCATCTCAGAAGAGGATCTGGCAGCAAATGATATCCTGGATT  
ACAAGGATGACGACGATAAGGTTTAA



[View online »](#)

**Protein Sequence:** >RC202285 protein sequence  
 Red=Cloning site Green=Tags(s)

MVPREAPESAQCLCPSLTIPNAKDVLKRHRKRRSRQHQRFMARKALLQEQLLSMPPEPGSSPLPTPFGA  
 ATATEAASSGKQCLRAGSGSAPCSRPPAPGKASGPLPSKCAIDCEMVGTPRGRVSELARCSIVSYHGD  
 VLYDKYIRPEMPIADYRTRWSGITRQHMRKAVPFQVAQKEILKLLKGVVVGHALHNDQFQALKYVHPRSQ  
 TRDTTYVPNFLSEPLHTRARVSLKDLALQLLHKKIQVGQHGHSVEDATTAMELYRLVEVQWEQQEARS  
 LWTCPEDREPDSSTDMEQYWPDDL AHGSRGGAREAQDRRN

TRTRPLEQKLISEEDLAANDILDYKDDDDKV

**Chromatograms:** [https://cdn.origene.com/chromatograms/mk6192\\_h12.zip](https://cdn.origene.com/chromatograms/mk6192_h12.zip)

**Restriction Sites:** SgfI-MluI

**Cloning Scheme:**



**ACCN:** NM\_022767

**ORF Size:** 975 bp

**OTI Disclaimer:** The molecular sequence of this clone aligns with the gene accession number as a point of reference only. However, individual transcript sequences of the same gene can differ through naturally occurring variations (e.g. polymorphisms), each with its own valid existence. This clone is substantially in agreement with the reference, but a complete review of all prevailing variants is recommended prior to use. [More info](#)

**OTI Annotation:** This clone was engineered to express the complete ORF with an expression tag. Expression varies depending on the nature of the gene.

**Components:** The ORF clone is ion-exchange column purified and shipped in a 2D barcoded Matrix tube containing 10ug of transfection-ready, dried plasmid DNA (reconstitute with 100 ul of water).

**Reconstitution Method:**

1. Centrifuge at 5,000xg for 5min.
2. Carefully open the tube and add 100ul of sterile water to dissolve the DNA.
3. Close the tube and incubate for 10 minutes at room temperature.
4. Briefly vortex the tube and then do a quick spin (less than 5000xg) to concentrate the liquid at the bottom.
5. Store the suspended plasmid at -20°C. The DNA is stable for at least one year from date of shipping when stored at -20°C.

**RefSeq:** [NM\\_022767.2](#), [NP\\_073604.2](#)

**RefSeq Size:** 3134 bp

**RefSeq ORF:** 978 bp

**Locus ID:** 64782

**UniProt ID:** [Q8WTP8](#)

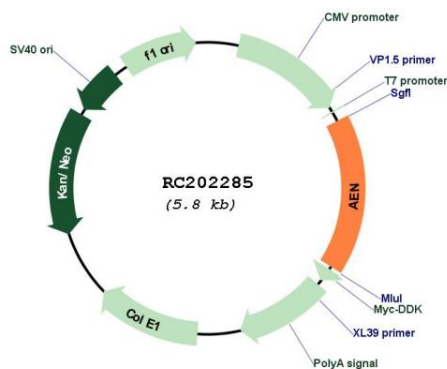
**Cytogenetics:** 15q26.1

**Domains:** EXOIII

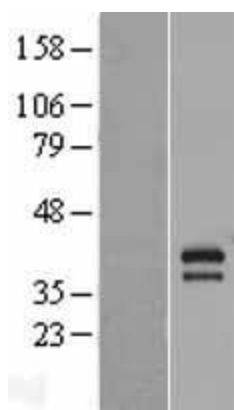
**MW:** 36.4 kDa

**Gene Summary:** Exonuclease with activity against single- and double-stranded DNA and RNA. Mediates p53-induced apoptosis. When induced by p53 following DNA damage, digests double-stranded DNA to form single-stranded DNA and amplifies DNA damage signals, leading to enhancement of apoptosis.[UniProtKB/Swiss-Prot Function]

### Product images:



Circular map for RC202285



Western blot validation of overexpression lysate (Cat# [LY402942]) using anti-DDK antibody (Cat# [TA50011-100]). Left: Cell lysates from untransfected HEK293T cells; Right: Cell lysates from HEK293T cells transfected with RC202285 using transfection reagent MegaTran 2.0 (Cat# [TT210002]).

Coomassie blue staining of purified AEN protein (Cat# [TP302285]). The protein was produced from HEK293T cells transfected with AEN cDNA clone (Cat# RC202285) using MegaTran 2.0 (Cat# [TT210002]).