

Product datasheet for RC202279

ORMDL3 (NM_139280) Human Tagged ORF Clone

Product data:

Product Type: Expression Plasmids
Tag: Myc-DDK
Symbol: ORMDL3
Mammalian Cell Selection: Neomycin
Vector: pCMV6-Entry (PS100001)
E. coli Selection: Kanamycin (25 ug/mL)
ORF Nucleotide Sequence: >RC202279 ORF sequence
 Red=Cloning site Blue=ORF Green=Tags(s)

TTTTGTAATACGACTCACTATAGGGCGGCCGGAATTCGTCGACTGGATCCGGTACCGAGGAGATCTGCC
 GCCCGCATCGCC

ATGAATGTGGGCACAGCGCACAGCGAGGTGAACCCCAACACGCGGGTGATGAACAGCCGTGGCATCTGGC
 TCTCTACGTGCTGGCCATCGGTCTCCTCCACATCGTGTGCTGAGCATCCCGTTTGTGAGTGTCCCTGT
 CGTCTGGACCCTACCAACCTCATTACAACATGGGCATGTATATCTTCTGCACACGGTGAAGGGGACA
 CCCTTTGAGACCCCGGACCAGGGCAAGGCGAGGCTGCTAACCCACTGGGAGCAGATGGATTATGGGGTCC
 AGTTCACGGCCTCTCGAAGTTCTTGACCATCACACCCATCGTGTGTACTTCTCACCAGCTTCTACAC
 TAAGTACGACCAGATCCATTTTGTGCTCAACACCGTGTCCCTGATGAGCGTGCTTATCCCAAGCTGCC
 CAGCTCCACGGAGTCCGGATTTTGAATCAATAAGTAC

ACGCGTACGCGGCCGCTCGAGCAGAACTCATCTCAGAAGAGGATCTGGCAGCAAATGATATCCTGGATT
 ACAAGGATGACGACGATAAGGTTTAA

Protein Sequence: >RC202279 protein sequence
 Red=Cloning site Green=Tags(s)

MNVGAHSEVNPNTVMNSRGIWLSYVLAIGLLHIVLLSIPFVSVPVVWTLNLIHNMGYIFLHTVKGT
 PFETPDQKGARLLTHWEQMDYGVQFTASRKFLTITPIVL YFLT SFYTKYDQIH FVLNTVSLMSVLIPKLP
 QLHGVRIFGINKY

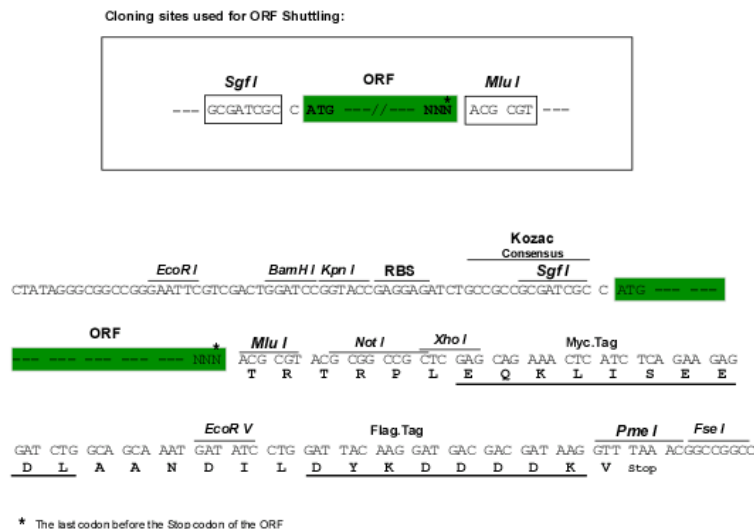
TRTRPLEQKLISEEDLAANDILDYKDDDDKV

Chromatograms: https://cdn.origene.com/chromatograms/mk6359_g12.zip

Restriction Sites: SgfI-MluI



[View online »](#)

Cloning Scheme:


ACCN: NM_139280

ORF Size: 459 bp

OTI Disclaimer: The molecular sequence of this clone aligns with the gene accession number as a point of reference only. However, individual transcript sequences of the same gene can differ through naturally occurring variations (e.g. polymorphisms), each with its own valid existence. This clone is substantially in agreement with the reference, but a complete review of all prevailing variants is recommended prior to use. [More info](#)

OTI Annotation: This clone was engineered to express the complete ORF with an expression tag. Expression varies depending on the nature of the gene.

Components: The ORF clone is ion-exchange column purified and shipped in a 2D barcoded Matrix tube containing 10ug of transfection-ready, dried plasmid DNA (reconstitute with 100 ul of water).

Reconstitution Method:

1. Centrifuge at 5,000xg for 5min.
2. Carefully open the tube and add 100ul of sterile water to dissolve the DNA.
3. Close the tube and incubate for 10 minutes at room temperature.
4. Briefly vortex the tube and then do a quick spin (less than 5000xg) to concentrate the liquid at the bottom.
5. Store the suspended plasmid at -20°C. The DNA is stable for at least one year from date of shipping when stored at -20°C.

Note: Plasmids are not sterile. For experiments where strict sterility is required, filtration with 0.22um filter is required.

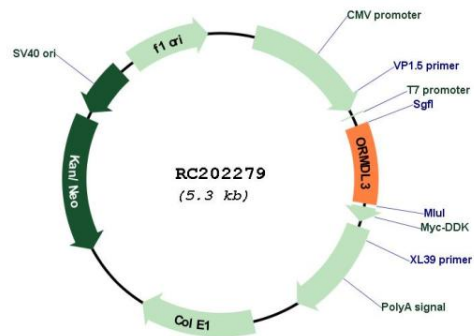
RefSeq: [NM_139280.4](#)

RefSeq Size: 2169 bp

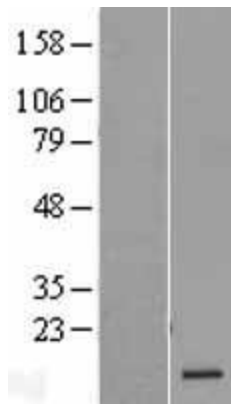
RefSeq ORF: 462 bp

Locus ID:	94103
UniProt ID:	Q8N138
Cytogenetics:	17q21.1
Protein Families:	Transmembrane
MW:	17.5 kDa
Gene Summary:	Negative regulator of sphingolipid synthesis. May indirectly regulate endoplasmic reticulum-mediated Ca(+2) signaling.[UniProtKB/Swiss-Prot Function]

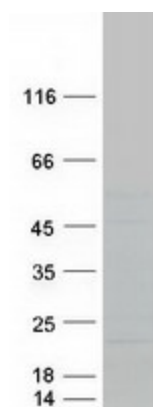
Product images:



Circular map for RC202279



Western blot validation of overexpression lysate (Cat# [LY408336]) using anti-DDK antibody (Cat# [TA50011-100]). Left: Cell lysates from untransfected HEK293T cells; Right: Cell lysates from HEK293T cells transfected with RC202279 using transfection reagent MegaTran 2.0 (Cat# [TT210002]).



Coomassie blue staining of purified ORMDL3 protein (Cat# [TP302279]). The protein was produced from HEK293T cells transfected with ORMDL3 cDNA clone (Cat# RC202279) using MegaTran 2.0 (Cat# [TT210002]).