

Product datasheet for **RC202278**

ZNF212 (NM_012256) Human Tagged ORF Clone

Product data:

Product Type:	Expression Plasmids
Product Name:	ZNF212 (NM_012256) Human Tagged ORF Clone
Tag:	Myc-DDK
Symbol:	ZNF212
Synonyms:	C2H2-150; ZNF182; ZNFC150
Mammalian Cell Selection:	Neomycin
Vector:	pCMV6-Entry (PS100001)
E. coli Selection:	Kanamycin (25 ug/mL)



[View online »](#)

ORF Nucleotide Sequence:

>RC202278 ORF sequence
 Red=Cloning site Blue=ORF Green=Tags(s)

TTTTGTAATACGACTCACTATAGGGCGGCCGGAATTCGTCGACTGGATCCGGTACCGAGGAGATCTGCC
 GCC**CGGATCGCC**

ATGGCGGAGTCGGCGCCTGCTCGGCACAGGAGAAAACGACGCTCCACACCTTTAACTTCTCCACACTTC
 CTTCAACAAGCAACAGAGAAAAGCTCCTATTTTCAGACCACCGAGATTTCACTCTGGACGGTGGTGGCCGC
 TATTCAGGCTGTGGAGAAGAAGATGGAGTCCCAGGCTGCCCGGCTACAGAGCCTGGAGGGGCGCACGGGG
 ACAGCCGAGAAGAAGCTGGCTGACTGCGAGAAGATGGCCGTGGAGTTCGGGAACCAGCTGGAGGGCAAGT
 GGGCCGTGCTGGGGACCTGCTGCAGGAGTATGGGCTACTGCAGAGGCGGCTGGAGAACCTGGAGAACCT
 GCTGCGCAACAGGAATTCTGGATCCTGCGGCTGCCCGGCGCAGCAAGGGGAGGCCCCCAAGGTGTCC
 AGGTCCTGGAGAATGATGGCGTCTGTTTCACCGAGCAGGAATGGGAGAATCTGGAGGATTGGCAGAAGG
 AGCTCTACAGAAACGTGATGGAGAGTAATAATGAGACACTGGTCTCTCTGAAGTCTTGGCCAGACAGA
 GGGAGAAGCGGAGTTGGGTACAGAGATGCTGGGTGACTTGAAGAGGAAGTCTGGTGGTGGCCACCCA
 GCAGGTGGGGTCAATGATCAAACAGGAGCTACAGTATACACAGGAAGGCCCTGCGGATCTTCTGGAGAGT
 TCTCATGCATTGCTGAAGAGCAGGCTTCTGAGCCAGAGCAGACCGAACTCTGGGGTGGTCAGGGCAG
 TTCTGTCTCTTGGAAACAGGCTCTGGGACTCTACTCTAGAGGAGCCTGTTGGTAGTAGAGTTCCTAGC
 AGCAGCAGAACTGTGGGCTGCCGAAGCAGAAATCTCATAGGCAGGTACAGCTGGACCAGGAATGTGGGC
 AGGGCTGAAGCTGAAAAAGGACACTTCCC GCCCTACGAATGTTCTGAGTGTGAGATCACCTTCCGCTA
 TAAGCAGCAGCTGGCCACACATCTGCGCAGCCACTCTGGTGGGGTCTGTACACCTGAGGAGCCAGAG
 GAGAGCCTTAGGCCAGCCACGGCTGAAACCACAGACCAAAAAGGCCAAGCTGCATCAGTGTGATGTGT
 GCCTGAGGAGCTTCACTGCAAGGTGAGCCTGGTACCCATCAGCGTTGCCACCTGCAGGAGGGGCCAG
 TGCCGGCCAGCATGTCCAAGAGAGGTTCTCACCAACAGCCTGGTTGCCCTGCCTGGCCACATCCCTTGG
 AGGAAAAGCCGGAGTTCCTCATCTGTGGTACTGTGGCAAGAGCTTCAGTCACCCATCTGACTTGGTGC
 GGCACCAGCGCATCCACACGGGTGAGCGGCCCTACAGCTGCACTGAGTGTGAGAAGAGCTTTGTCCAGAA
 GCAGCACCTCTGCAGCACAGAAATCCACCAGCGGGAGCGGGTGGGCTGGCCCTGGAGCCCGGAAGG
 CCCAATGGCCTGCTT

ACGGTACGCGGCCGCTCGAGCAGAACTCATCTCAGAAGAGGATCTGGCAGCAATGATATCTGGATT
ACAAGGATGACGACGATAAGGTTTAA

Protein Sequence:

>RC202278 protein sequence
 Red=Cloning site Green=Tags(s)

MAESAPARHRRRRSTPLTSSTLPSQATEKSSYFQTTEISLWTVVAAIQAVEKKMESQAARLQSLEGRTG
 TAEKKLADCEKMAVEFGNQLLEGKWAVLGTLLQEYGLLQRRLENVENLLRNRNFILRLPPGSKGEAPKVS
 RSLNDGVCFTQEWENLEDWQKELYRNVMSNYETLVSLKVLGQTEGEAELGTEMLGDLEEGPGGAHP
 AGGVMIKQELQYTQEGPADLPGEFSCIAEEQAFLSPEQTELVWGGQSSVLLLETGPGDSTLEEPVGSRVPS
 SSRTVGC PKQKSHRQVQLDQECGQGLKDKDTSRYPYECSECEITFRYKQQLATHLRSHSGWGSCTPEEPE
 ESLRPRPRLKPQTKAKLHQCDVCLRSFSCKVSLVTHQRCHLQEGPSAGQHVQERFSPNSLVALPGHIPW
 RKSRSLLICGYCGKFSHPSDLVRHQRIHTGERPYSCTECKSFVQKQHLLQHQKIHQRERGGLALEPGR
 PNGLL

TRTRPLEQKLI SEEDLAANDILDYKDDDDKV

Chromatograms:

https://cdn.origene.com/chromatograms/mk6523_g07.zip

Restriction Sites:

Sgfl-Mlul

Cloning Scheme:


ACCN: NM_012256

ORF Size: 1485 bp

OTI Disclaimer: The molecular sequence of this clone aligns with the gene accession number as a point of reference only. However, individual transcript sequences of the same gene can differ through naturally occurring variations (e.g. polymorphisms), each with its own valid existence. This clone is substantially in agreement with the reference, but a complete review of all prevailing variants is recommended prior to use. [More info](#)

OTI Annotation: This clone was engineered to express the complete ORF with an expression tag. Expression varies depending on the nature of the gene.

Components: The ORF clone is ion-exchange column purified and shipped in a 2D barcoded Matrix tube containing 10ug of transfection-ready, dried plasmid DNA (reconstitute with 100 ul of water).

- Reconstitution Method:**
1. Centrifuge at 5,000xg for 5min.
 2. Carefully open the tube and add 100ul of sterile water to dissolve the DNA.
 3. Close the tube and incubate for 10 minutes at room temperature.
 4. Briefly vortex the tube and then do a quick spin (less than 5000xg) to concentrate the liquid at the bottom.
 5. Store the suspended plasmid at -20°C. The DNA is stable for at least one year from date of shipping when stored at -20°C.

RefSeq: [NM_012256.4](#)

RefSeq Size: 2814 bp

RefSeq ORF: 1488 bp

Locus ID: 7988

UniProt ID: [Q9UDV6](#)

Cytogenetics: 7q36.1

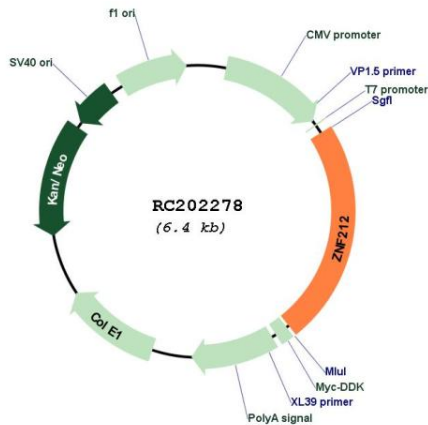
Domains: KRAB, zf-C2H2

Protein Families: Transcription Factors

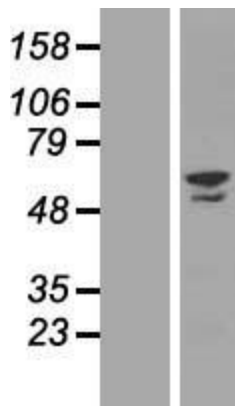
MW: 55.4 kDa

Gene Summary: This gene belongs to the C2H2-type zinc finger gene family. The zinc finger proteins are involved in gene regulation and development, and are quite conserved throughout evolution. Like this gene product, a third of the zinc finger proteins containing C2H2 fingers also contain the KRAB domain, which has been found to be involved in protein-protein interactions. [provided by RefSeq, Jul 2008]

Product images:



Circular map for RC202278



Western blot validation of overexpression lysate (Cat# [LY415882]) using anti-DDK antibody (Cat# [TA50011-100]). Left: Cell lysates from untransfected HEK293T cells; Right: Cell lysates from HEK293T cells transfected with RC202278 using transfection reagent MegaTran 2.0 (Cat# [TT210002]).