

Product datasheet for RC202265

GGH (NM_003878) Human Tagged ORF Clone

Product data:

Product Type:	Expression Plasmids
Product Name:	GGH (NM_003878) Human Tagged ORF Clone
Tag:	Myc-DDK
Symbol:	GGH
Synonyms:	GATD10; GH
Mammalian Cell Selection:	Neomycin
Vector:	pCMV6-Entry (PS100001)
E. coli Selection:	Kanamycin (25 ug/mL)
ORF Nucleotide Sequence:	>RC202265 ORF sequence Red=Cloning site Blue=ORF Green=Tags(s)

TTTTGTAATACGACTCACTATAGGGCGGCCGGAATTCGTCGACTGGATCCGGTACCGAGGAGATCTGCC
GCC**CGATCGCC**

ATGGCCAGTCCGGGCTGCCTGCTGTGCGTGTGGCCTGCTACTCTGCGGGGCGGCAGCCTCGAGCTGT
CTAGACCCACGGCGACACCGCCAAGAAGCCCATCATCGGAATTAATGCAAAAATGCCGTAATAAAGT
CATGAAAACTATGGAAGATACTATATTGCTGCGTCCTATGTAAGTACTTGGAGTCTGCAGGTGCGAGA
GTTGTACCAGTAAGGCTGGATCTTACAGAGAAAGACTATGAAATACTTTCAAATCTATTAATGGAATCC
TTTTCCCTGGAGGAAGTGTGACCTCAGACGCTCAGATTATGCTAAAGTGGCCAAAATATTTATAACTT
GTCCATACAGAGTTTTGATGATGGAGACTATTTCCCTGTGTGGGCACATGCCTTGGATTGAAGAGCTT
TCACTGCTGATTAGTGGAGAGTGCTTATTAAGTCCACAGATACTGTTGACGTGGCAATGCCGCTGAACT
TCACTGGAGGTCAATTGCACAGCAGAAATGTTCCAGAAATTTCTACTGAGTTGTTGCTGTCATTAGCAGT
AGAACCTCTGACTGCCAATTTCCATAAGTGGAGCCTCTCCGTGAAGAATTTACAATGAATGAAAAGTTA
AAGAAGTTTTCAATGCTTAACATAAAACAGATGGCAAGATTGAGTTATTTCAACAATGGAAGGAT
ATAAGTATCCAGTATATGGTGTCCAGTGGCATCCAGAGAAAGCACCTTATGAGTGAAGAATTTGGATGG
CATTTCCCATGCACCTAATGCTGTGAAAACCGCATTTTATTTAGCAGAGTTTTTTGTTAATGAAGCTCGG
AAAAACAACCATCATTTTAAATCTGAATCTGAAGAGGAGAAAGCATTGATTTATCAGTTCAGTCCAATTT
ATACTGGAAATATTTCTTCATTTACAGCAATGTTACATATTTGAT

ACGCGTACGCGGCCGCTCGAGCAGAAAACCTCATCTCAGAAGAGGATCTGGCAGCAAATGATATCCTGGATT
ACAAGGATGACGACGATAAGGTTTAA



[View online »](#)

Protein Sequence: >RC202265 protein sequence
Red=Cloning site Green=Tags(s)

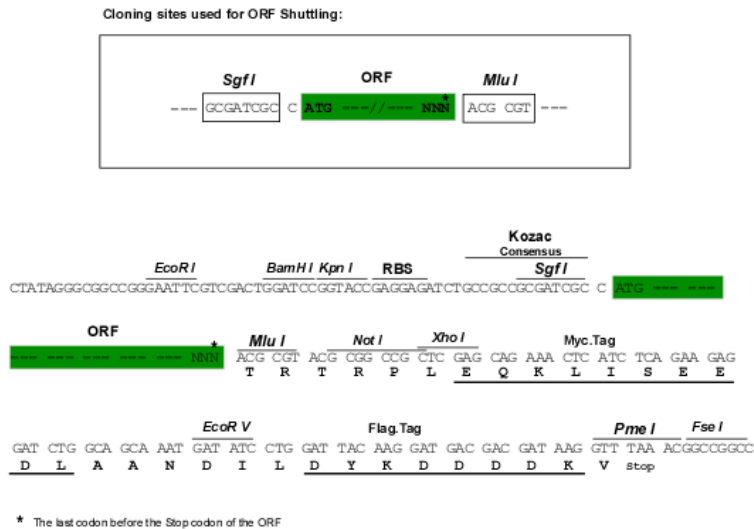
MASPGCLLCVGLLLLGAASLELSRPHGDTAKKPIIGILMQKCRNKVMKNYGRYYIAASYVKYLESAGAR
 VVPVRLDLTEKDYEILFKSINGILFPGGSVDLRRSDYAKVAKIFYNLSIQSFDDGDYFPVWGTCCLGFEEL
 SLLISGECLLTATDVTVDAMPLNFTGGQLHSRMFQNFTELLSLAVEPLTANFHKWSLSVKNFMTNEKL
 KKFFFNVLTTNTDGKIEFISTMEGYKYPVYGVQWHPEKAPYEWKNLGISHAPNAVKTAFYLAEFFVNEAR
 KNNHHFKSESEEEKALIYQFSPIYTGNISSFQCCYIFD

TRTRPLEQKLISEEDLAANDILDYKDDDDKV

Chromatograms: https://cdn.origene.com/chromatograms/mk6324_h05.zip

Restriction Sites: SgfI-MluI

Cloning Scheme:



ACCN: NM_003878

ORF Size: 954 bp

OTI Disclaimer: The molecular sequence of this clone aligns with the gene accession number as a point of reference only. However, individual transcript sequences of the same gene can differ through naturally occurring variations (e.g. polymorphisms), each with its own valid existence. This clone is substantially in agreement with the reference, but a complete review of all prevailing variants is recommended prior to use. [More info](#)

OTI Annotation: This clone was engineered to express the complete ORF with an expression tag. Expression varies depending on the nature of the gene.

Components: The ORF clone is ion-exchange column purified and shipped in a 2D barcoded Matrix tube containing 10ug of transfection-ready, dried plasmid DNA (reconstitute with 100 ul of water).

Reconstitution Method:

1. Centrifuge at 5,000xg for 5min.
2. Carefully open the tube and add 100ul of sterile water to dissolve the DNA.
3. Close the tube and incubate for 10 minutes at room temperature.
4. Briefly vortex the tube and then do a quick spin (less than 5000xg) to concentrate the liquid at the bottom.
5. Store the suspended plasmid at -20°C. The DNA is stable for at least one year from date of shipping when stored at -20°C.

RefSeq: [NM_003878.3](#)

RefSeq Size: 1505 bp

RefSeq ORF: 957 bp

Locus ID: 8836

UniProt ID: [Q92820](#)

Cytogenetics: 8q12.3

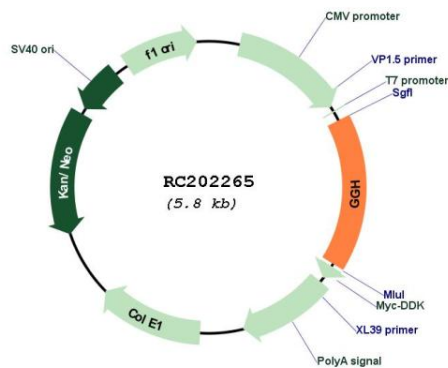
Protein Families: Druggable Genome, Protease, Secreted Protein

Protein Pathways: Folate biosynthesis

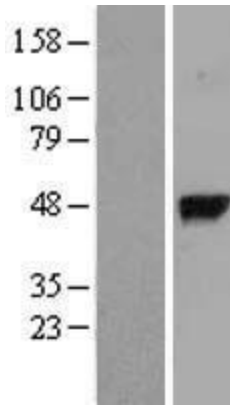
MW: 36 kDa

Gene Summary: This gene catalyzes the hydrolysis of folylpoly-gamma-glutamates and antifolylpoly-gamma-glutamates by the removal of gamma-linked polyglutamates and glutamate. [provided by RefSeq, Jul 2008]

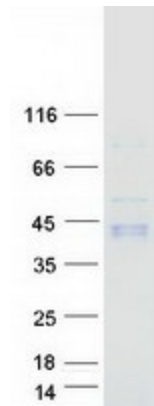
Product images:



Circular map for RC202265



Western blot validation of overexpression lysate (Cat# [LY418375]) using anti-DDK antibody (Cat# [TA50011-100]). Left: Cell lysates from untransfected HEK293T cells; Right: Cell lysates from HEK293T cells transfected with RC202265 using transfection reagent MegaTran 2.0 (Cat# [TT210002]).



Coomassie blue staining of purified GGH protein (Cat# [TP302265]). The protein was produced from HEK293T cells transfected with GGH cDNA clone (Cat# RC202265) using MegaTran 2.0 (Cat# [TT210002]).