

## Product datasheet for **RC202264**

### **C14orf133 (VIPAS39) (NM\_022067) Human Tagged ORF Clone**

#### **Product data:**

Product Type:	Expression Plasmids
Product Name:	C14orf133 (VIPAS39) (NM_022067) Human Tagged ORF Clone
Tag:	Myc-DDK
Symbol:	C14orf133
Synonyms:	C14orf133; hSPE-39; SPE-39; SPE39; VIPAR; VPS16B
Mammalian Cell Selection:	Neomycin
Vector:	pCMV6-Entry (PS100001)
E. coli Selection:	Kanamycin (25 ug/mL)



[View online »](#)

**ORF Nucleotide Sequence:**

>RC202264 ORF sequence  
 Red=Cloning site Blue=ORF Green=Tags(s)

TTTTGTAATACGACTCACTATAGGGCGGCCGGAATTCGTCGACTGGATCCGGTACCGAGGAGATCTGCC  
 GCC**CGGATCGCC**

ATGAATCGGACAAAGGGTATGAGGAGGAGTATTGGAACAGCTCCAAGTTCAAGGCTTTTACCTTTGACG  
 ATGAAGACGATGAGCTTTTACAGTTAAAGGAGTCCAAGCGGGCGGTGAACAGCCTCCGAGACTTCGTGGA  
 TGATGATGACGATGATGACCTGGAGCGAGTCAGCTGGAGTGGGGAACCTGTGGGAAGTATCTCATGGTCC  
 ATCAGAGAGACTGCTGGTAATAGCGGCTCAACCCACGAGGGGCGTGAACAGCTAAAGAGCCGAAACAGCT  
 TCTCCTCTATGCACAACACCAAGCCTACTTCTACCTACTCCCTGAGCAGCTTTTTTAGAGGTAGAAC  
 TAGACCTGGAAGTTTCCAGTCCCTTTCTGATGCTCTGTCAGACACACCTGCCAAAAGCTATGCTCCAGAG  
 CTGGGGAGACCAAGGGGAGTATAGGGATTACAGCAATGACTGGAGCCCAGTGATACAGTGGCAGCTC  
 TCCGGAAGGGCAAGGTTTGTCTACTAGAGAGATCCGCTCCTTACAGGACAACTACAACCTCTAGAAGA  
 GGCAGTAAGCATGCATGATGAAACGTCATTACTGCAGTTCTGATTTTCTGAAGAGGACTGAGCAAA  
 GAGATCCTCTCCGAGAGCTGGAGGTGCACAGGTTGCCCTGAGACATCTTATCACTTCCCTAAGGAAA  
 TAGGGGATCAAAAGTTGCTTTTAGACCTCTTCAGGTTCCCTAGATAGAACAGAAGAGCTTGCCTATCTCA  
 TTATCGAGAGCATTGAAACATTCAGGACCTGACAAACGAAAAGAATTTCTTAAACCTGTGTTGGTTTG  
 CCATTTTCAGCAGAAGATTCCGCACACATACAGGACCATACACGCTCCTGGAACGTCAGATCATTATTG  
 AGGCAATGATCGCCATCTAGAATCAGCAGGACAGACTGAGATCTCCGAAAGCACCCCCGAAAGCCTC  
 CATCCTCAACATGCCACTAGTGACAACACTTTTCTACTCTGCTTCTATCACTACACAGAGGCTGAGGGG  
 ACATTCAGCAGTCCCCTCAACCTGAAGAAGACATTTAAGATCCCAGATAAACAGTATGTGCTGACAGCCC  
 TGGCTGCTCGTGCCAAGCTTCGAGCCTGGAATGATGATGATGCCCTATTCACCACAAGAACTGGCTGGG  
 CTATACCAAGAAGAGAGACCCATTGGCTTCCATCGGGTTGTCGAAATTTGCACAAGAACAATGCCCT  
 GTGCAGATATTACAGGAGTATGTCAATCTGGTGAAGATGTGGACACGAAGTTGAACTTAGCCACTAAGT  
 TCAAGTGCCATGATGTCGTCATTGATACCTACCGGACCTGAAGGATCGTCAACAGTTGCTAGCATAACG  
 GAGTAAGGTAGATAAAGGATCAGCAGAGGAGGAGAAGATTGATGCTCTTCTCAGCAGCTCGCAAATTCGA  
 TGGAGAAT

**ACGCGT**ACGCGGGCGCTCGAGCAGAAACTCATCTCAGAAGAGGATCTGGCAGCAAATGATATCCTGGATT  
 ACAAGGATGACGACGATAAGGTTTAA

**Protein Sequence:**

>RC202264 protein sequence  
 Red=Cloning site Green=Tags(s)

MNRTKGDEEEYWNSSKFKAFTFDDDELSQLKESKRAVNSLRDFVDDDDDLERVSWSGEPVGSISWS  
 IRETAGNSGSTHEGREQLKSRNSFSSYAQLPKPTSTYLSLSSFFRGRTRPGSFQSLSDALSDTPAKSYAPE  
 LGRPKEYRDYSNDWSPSDTVRRLRKGKVCSLERFSLQDKLQLEEA VSMHDGNVITAVLIFLKRITLSK  
 EILFRELEVRQVALRHLIHLKEIGDQKLLLDLFRFLDRTEELALSHYREHLNIQDPDKRKEFLKTCVGL  
 PFSAEDESAHIQDHYTLLEERQIIIEANDRHLESAGQTEIFRKHPRKASILNMPVTLTFYSCFYHYTEAEG  
 TFSSPVNLKKTFFKIPDKQYVLTALAARAKLRANDVDALFTTKNWLGYTKKRAPIGFHRVVEILHKNAP  
 VQILQEYVNLVEDVDTKLNLATKFKCHDVVIDTYRDLKDRQQLLAYRSKVDKGSAAEEKIDALLSSQIR  
 WKN

**TR**TRPLEQKLISEEDLAANDILDYKDDDDKV

**Chromatograms:**

[https://cdn.origene.com/chromatograms/mk6008\\_g03.zip](https://cdn.origene.com/chromatograms/mk6008_g03.zip)

**Restriction Sites:**

SgfI-MluI

**Cloning Scheme:**


**ACCN:** NM\_022067

**ORF Size:** 1479 bp

**OTI Disclaimer:** The molecular sequence of this clone aligns with the gene accession number as a point of reference only. However, individual transcript sequences of the same gene can differ through naturally occurring variations (e.g. polymorphisms), each with its own valid existence. This clone is substantially in agreement with the reference, but a complete review of all prevailing variants is recommended prior to use. [More info](#)

**OTI Annotation:** This clone was engineered to express the complete ORF with an expression tag. Expression varies depending on the nature of the gene.

**Components:** The ORF clone is ion-exchange column purified and shipped in a 2D barcoded Matrix tube containing 10ug of transfection-ready, dried plasmid DNA (reconstitute with 100 ul of water).

**Reconstitution Method:**

1. Centrifuge at 5,000xg for 5min.
2. Carefully open the tube and add 100ul of sterile water to dissolve the DNA.
3. Close the tube and incubate for 10 minutes at room temperature.
4. Briefly vortex the tube and then do a quick spin (less than 5000xg) to concentrate the liquid at the bottom.
5. Store the suspended plasmid at -20°C. The DNA is stable for at least one year from date of shipping when stored at -20°C.

**RefSeq:** [NM\\_022067.4](#)

**RefSeq Size:** 2889 bp

**RefSeq ORF:** 1482 bp

**Locus ID:** 63894

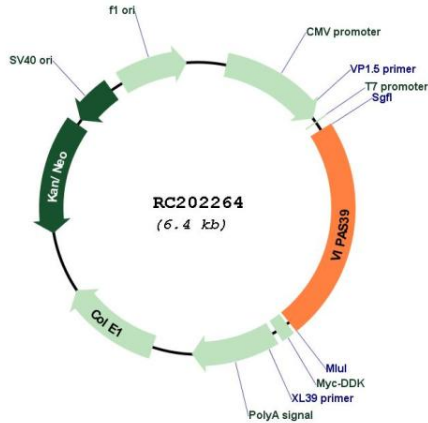
**UniProt ID:** [Q9H9C1](#)

**Cytogenetics:** 14q24.3

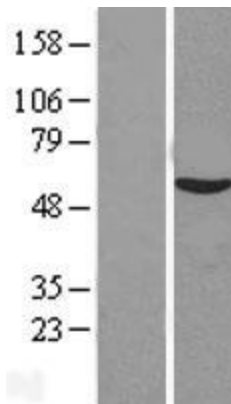
MW: 57 kDa

Gene Summary: This gene encodes a protein involved in the sorting of lysosomal proteins. Mutations in this gene are associated with ARCS2 (arthrogryposis, renal dysfunction, and cholestasis-2). Alternative splicing results in multiple transcript variants.[provided by RefSeq, Jul 2010]

Product images:



Circular map for RC202264



Western blot validation of overexpression lysate (Cat# [LY402902]) using anti-DDK antibody (Cat# [TA50011-100]). Left: Cell lysates from untransfected HEK293T cells; Right: Cell lysates from HEK293T cells transfected with RC202264 using transfection reagent MegaTran 2.0 (Cat# [TT210002]).