

Product datasheet for **RC202263**

LRCH4 (NM_002319) Human Tagged ORF Clone

Product data:

Product Type:	Expression Plasmids
Product Name:	LRCH4 (NM_002319) Human Tagged ORF Clone
Tag:	Myc-DDK
Symbol:	LRCH4
Synonyms:	LRN; LRRN1; LRRN4; PP14183
Mammalian Cell Selection:	Neomycin
Vector:	pCMV6-Entry (PS100001)
E. coli Selection:	Kanamycin (25 ug/mL)



[View online »](#)

**ORF Nucleotide
Sequence:**

>RC202263 ORF sequence
 Red=Cloning site Blue=ORF Green=Tags(s)

TTTTGTAATACGACTCACTATAGGGCGGCCGGGAATTCGTCGACTGGATCCGGTACCGAGGAGATCTGCC
 GCC**CGGATCGCC**

ATGGCGGGCGCCGTAGCGGCTCCACTCGCCGCCGGGGGTGAGGAGCGGCAGCCACGACCTCCGTGCCCC
 GGTCTCCAGGTCTGCCGGGAGACGCAGTGCAGAGCGGGCCCTAGAGGAGCCGTGGCCACCGGGACCCCT
 GAACCTGTCTAACCGGCGCTTGAAGCACTTCCCCGGGGCGCGGCCCGTAGCTACGACCTGTCAGACATC
 ACCCAGGCTGACCTGTCCCGAACCAGTTTCCCGAGGTGCCGAGGCGCGTCCAGCTGGTGTCCCTGG
 AGGGCCTGAGCCTCTACCACAATTGCTGAGATGCCTGAACCCAGCCTTGGGGAATCTCACAGCCCTCAC
 CTACCTCAACCTCAGCCGAAACCAGCTGTCGCTGCTGCCACCCTACATCTGCCAGCTGCCCTGAGGGTC
 CTCATCGTCAGCAACAACAGCTGGGAGCCCTGCCCCCTGACATCGGCACCCTGGGAAGCCTGCGACAGC
 TTGACGTGAGCAGCAACGAGCTCCAATCCCTGCCCTCGGAAGTGTGTGGCTCTCTTCCCTGCGGGACCT
 CAATGTCCGGAGGAACCAGCTCAGTACGCTGCCGAAGAGCTGGGGGACCTCCCTCTGGTCCGCCTGGAT
 TTCTCCTGTAACCGCGTCTCCCGAATCCAGTCTCCTTCTGCCGCTGAGGCACCTGCAGGTCATTTCTGC
 TGGACAGCAACCTCTGCAGAGTCCACCTGCCAGGTCTGCCTGAAGGGGAAACTTCACATCTTCAAGTA
 TTTGTCCACAGAGGCCGGGACGCGTGGGTGCGCCCTGGGGGACCTGGCCCTTCTCGGCCCCGAGTTTC
 AGTCCCTGCCCTGCAGAGGATCTATTTCCGGGACATCGGTACGATGGTGGGCTGGACTCAGGCTTCCACA
 GCGTTGATAGTGGCAGCAAGAGGTGGTCTGAAATGAGTCAACAGATGAATTTTCAGAGCTGTATTCCG
 GATCTCAGAGCTGGCCCGGAGCCCCGGGGGCCAGAGAACGCAAGGAGGATGGCTCAGCGGACGGAGAC
 CCTGTGCAGATTGACTTCATCGACAGCCATGTCCCGGGGAGGATGAAGAGCGAGGCACTGTGGAGGAGC
 AGCGACACCCGAATTAAGCCCTGGGGCAGGGGACAGGGAGAGGGCACCAAGCAGCAGGCGGGAGGAGCC
 GGCAGGGGAGGAGCGCGCGCCCGGACACCTTGCAGCTGTGGCAGGAGCGGGAACGGCGGCAGCAGCAG
 CAGAGCGGGCGTGGGGGCCCGAGGAAGGATAGCCTCTTGAAGCCAGGGCTCAGGGCTGTTGTGGGAG
 GGGCCGCCCGTGTCCACTCAAGCCATGCACAACGGCTCGCCTAAGTCCAGTGCCTCCCAAGCAGGGGC
 TGCAGCGGGCAGGGAGCCCCGCCCTGCCCTGCCTCCCAAGAGCCCTTCCCATAGCTGGACCAGCG
 ACAGCACCTGCTCCACGGCCACTTGGCTCCATTCAGAGACCAACAGTTCTCTTCCGTTCTCTCTC
 AGAGTGGCTCAGGCCCTTCTCACCAGACTCTGTCTGAGACCTCGGCGGTACCCCCAGGTTCCAGATGA
 GAAGGACTTAATGACTCAGCTGCGCCAGGTCTTGAGTCCGGCTGCAGCGGCCCTGCCTGAGGACCTG
 GCCGAGGCTCTGGCCAGTGGGTCTCCTGTGCCAGCTGGCCAACCAGCTACGGCCGCGCTCCGTGCCCT
 TCATCCATGTGCCCTCCCCTGCTGTGCCAAAACCTCAGTGCCTCAAGGCTCGGAAGAATGTGGAGAGTTT
 TCTAGAAGCCTGTGAAAAATGGGGTGCCTGAGGCTGACCTGTGCTCGCCCTCGGATCTCTCCAGGGC
 ACTGCCGGGGGCTGCGGACCGCTGGAGGCCGTGAAGCGGGTGGGGGCAAGGCCCTACCGCCCTCT
 GGCCCCCTCTGGTCTGGGCGGCTTCGTCGTTCTACGTGGTCTCATGCTGCTCTATGTCACCTA
 CACTCGGCTCCTGGTTCC

ACGCGTACGCGGGCGCTCGAGCAGAACTCATCTCAGAAGAGGATCTGGCAGCAATGATATCCTGGATT
 ACAAGGATGACGACGATAAGGTTTAA

Protein Sequence: >RC202263 protein sequence
 Red=Cloning site Green=Tags(s)

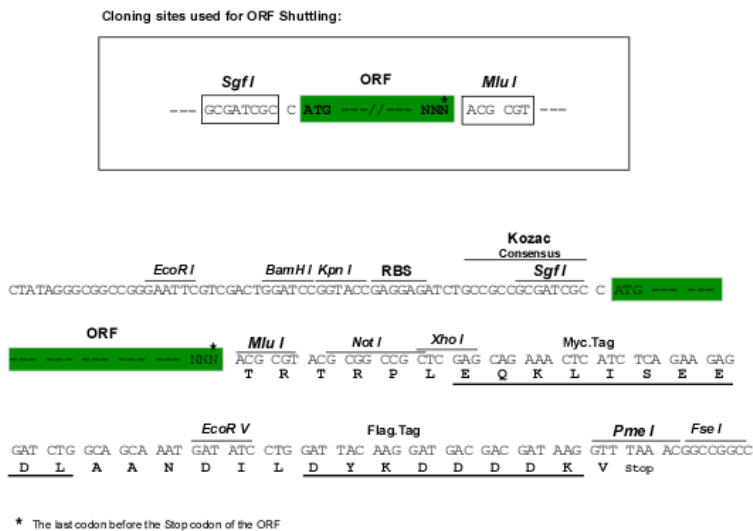
```
MAAAVAAPLAAGGEEAAATTSVPGSPGLPGRRSAERALEEAVATGTLNLSNRRLKHFFRGAARSYDLSDI
TQADLSRNRFPVEAACQLVSLLEGLSLYHNCLRCLNPALGNLTALTYLNLNRNQLSLLPPYICQLPLRV
LIVSNNKLGALPPDIGTLGSLRQLDVSSNELQSLPSELCSLRLDLNVRNQLSTLPEELGDLPLVRLD
FSCNRVSRIPVSFCRLRHLQVILLDSNPLQSPPAQVCLKGLHIFKYLSTEAGQRGSALGDLAPSRPPSF
SPCPAEDLFPGHRYDGGLD SGFHSVDSGSKRWSGNESTDEFSELSFRISELAREPRGPRERKEDGSADGD
PVQIDFIDSHVPGEDEERTVEEQRPPELSPGADRERAPSSRREEPAGEERRRPDTLQLWQERERRRQQ
QSGAWGAPRKDSLLKPLRAVVGAAAVSTQAMHNGSPKSSASQAGAAAGQGAPAPAPASQEPLPIAGPA
TAPAPRPLGSIQRPNSFLFRSSQSGSPSPDSVLRPRRYQVPDEKDLMTQLRQVLESRLQRPLPEDL
AEALASGVILCQLANQLRPRVPIHVPSPAVPKLSALKARKNVESFLEACRKMVGPEADLCSPDLLQG
TARGLRTALEAVKRVGGKALPPLWPPSGLGGFVVFYVVLMLLLVYTYTRLLGS
```

TRTRPLEQKLISEEDLAANDILDYKDDDDKV

Chromatograms: https://cdn.origene.com/chromatograms/mk6310_d02.zip

Restriction Sites: SgfI-MluI

Cloning Scheme:



ACCN: NM_002319

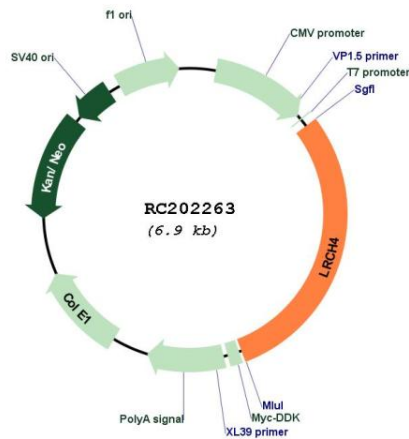
ORF Size: 2049 bp

OTI Disclaimer: The molecular sequence of this clone aligns with the gene accession number as a point of reference only. However, individual transcript sequences of the same gene can differ through naturally occurring variations (e.g. polymorphisms), each with its own valid existence. This clone is substantially in agreement with the reference, but a complete review of all prevailing variants is recommended prior to use. [More info](#)

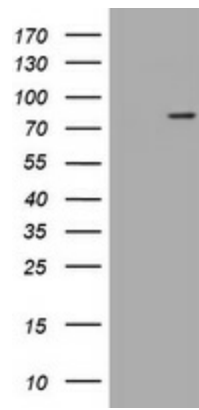
OTI Annotation: This clone was engineered to express the complete ORF with an expression tag. Expression varies depending on the nature of the gene.

Components:	The ORF clone is ion-exchange column purified and shipped in a 2D barcoded Matrix tube containing 10ug of transfection-ready, dried plasmid DNA (reconstitute with 100 ul of water).
Reconstitution Method:	<ol style="list-style-type: none"> 1. Centrifuge at 5,000xg for 5min. 2. Carefully open the tube and add 100ul of sterile water to dissolve the DNA. 3. Close the tube and incubate for 10 minutes at room temperature. 4. Briefly vortex the tube and then do a quick spin (less than 5000xg) to concentrate the liquid at the bottom. 5. Store the suspended plasmid at -20°C. The DNA is stable for at least one year from date of shipping when stored at -20°C.
RefSeq:	<u>NM_002319.5</u>
RefSeq Size:	3255 bp
RefSeq ORF:	2052 bp
Locus ID:	4034
UniProt ID:	<u>O75427</u>
Cytogenetics:	7q22.1
Protein Families:	Druggable Genome, Transmembrane
MW:	73.5 kDa
Gene Summary:	This gene encodes a protein that contains leucine-rich repeats (LRR) at its amino terminus and that is known to be involved in ligand binding. The carboxyl terminus may act as a membrane anchor. Identified structural elements suggest that the encoded protein resembles a receptor. [provided by RefSeq, Jul 2008]

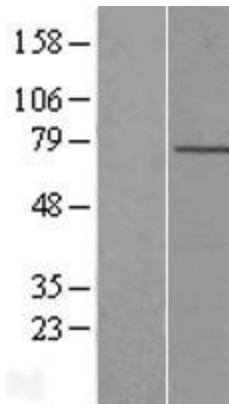
Product images:



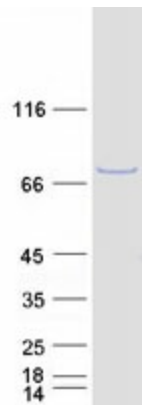
Circular map for RC202263



HEK293T cells were transfected with the pCMV6-ENTRY control (Cat# [PS100001], Left lane) or pCMV6-ENTRY LRCH4 (Cat# RC202263, Right lane) cDNA for 48 hrs and lysed. Equivalent amounts of cell lysates (5 ug per lane) were separated by SDS-PAGE and immunoblotted with anti-LRCH4 (Cat# [TA505246]). Positive lysates [LY419382] (100ug) and [LC419382] (20ug) can be purchased separately from OriGene.



Western blot validation of overexpression lysate (Cat# [LY419382]) using anti-DDK antibody (Cat# [TA50011-100]). Left: Cell lysates from untransfected HEK293T cells; Right: Cell lysates from HEK293T cells transfected with RC202263 using transfection reagent MegaTran 2.0 (Cat# [TT210002]).



Coomassie blue staining of purified LRCH4 protein (Cat# [TP302263]). The protein was produced from HEK293T cells transfected with LRCH4 cDNA clone (Cat# RC202263) using MegaTran 2.0 (Cat# [TT210002]).