

## Product datasheet for **RC202258**

### **PRRC1 (NM\_130809) Human Tagged ORF Clone**

#### **Product data:**

Product Type:	Expression Plasmids
Product Name:	PRRC1 (NM_130809) Human Tagged ORF Clone
Tag:	Myc-DDK
Symbol:	PRRC1
Mammalian Cell Selection:	Neomycin
Vector:	pCMV6-Entry (PS100001)
E. coli Selection:	Kanamycin (25 ug/mL)



[View online »](#)

**ORF Nucleotide Sequence:**

>RC202258 ORF sequence  
 Red=Cloning site Blue=ORF Green=Tags(s)

TTTTGTAATACGACTCACTATAGGGCGGCCGGGAATTCGTCGACTGGATCCGGTACCGAGGAGATCTGCC  
 GCCGCGATCGCC

ATGGAAGAGAGTGAATAGAGACAACACCACCTGGGACTCCTCCACCAAATCCTGCAGGGCTGGCTGCTA  
 CTGCTATGTCTTCTACCCCTGTTCCATTAGCGGCAACCAGTTCTTTTTCTCTCCAAATGTATCCTCCAT  
 GGAGTCTTCCCACCACTCGCATACTCTACTCCTCAGCCGCCCTTCTCCTGTGAGGCCTTCAGACCA  
 TTACCTTTTGTGCCTCCTCCTGCAGTTCCTTCTGTCCCACCACCTGTTACTTCTATGCCACCTCCTGTT  
 CTCCATCAACTGCTGCTGCCTTCGGTAATCCTCCTGTATCTCACTTCCCACCTTCAACTTCTGCCCAAA  
 CACTCTTTTACCTGCACCCCTTCGGTCTCTATATCAGGATTTTCTGTTGGTTCAACTTATGACATT  
 ACAAGGGGACATGCTGGGAGAGCTCCCCAGACACCCTGATGCCATCATTTTCTGCACCTCAGGAACAG  
 GTCTTTTGCCAACTCCTATTACTCAGCAAGCCAGTTTGACATCTCTGGCAGGGAACTGGAACCACATC  
 AGCCATTACTTTCCAGAGGAGCAAGAAGACCCTAGAATTACTAGAGGTCAGGATGAAGCATCTGCTGGT  
 GGAATCTGGGGTTTTATTAAGGGTGTGGCTGGGAATCCTATGGTGAAGTCTGTGCTTGATAAGACAAAAC  
 ATTCAGTAGAAAAGCATGATTACAACGCTGGACCCTGGCATGGCTCCCTATATCAAATCTGGAGGTGAACT  
 GGATATTGTAGTGACCTCAAATAAAGAAGTAAAAGTTGCTGCTGTCCGAGATGCCTTCCAGGAGGTCTTT  
 GGCTTAGCTGTGGTTGTAGGGGAAGCTGGACAGTCCAATATTGCCCCACAACCAGTGGGCTATGCAGCTG  
 GATTAAGGTGCTCAGGAACGGATAGATAGCTTGCCTGCAACTGGGGTGATCCATGAAAAACAGACAGC  
 TGTGTCAGTAGAAAACCTCATTGCAGAATTGCTGCCTGACAAATGGTTTGACATTGGTTGTTGGTGGTT  
 GAAGATCTGCCATGGCATTCTAGAAACATTTACACAAGCCACACCAGTGCCTTTGGAATTTGTAC  
 AGCAGGCTCAAAGTCTAACTCCCAGGACTATAATCTGAGTGGTCAGGCCTTTTGGTGACAGTGGGTGA  
 AGTCCTGGAAAAGAGTTTACTGAATGTCAGCCGGACTGATTGGCACATGGCATTACTGGGATGTCCCGT  
 CGGCAGATGATCTACAGTGCAGCCAGAGCGATAGCAGGCATGTATAAACAGCGCCTGCCACCCAGGACAG  
 TG

ACGCGTACGCGGCCGCTCGAGCAGAAACTCATCTCAGAAGAGGATCTGGCAGCAAATGATATCCTGGATT  
 ACAAGGATGACGACGATAAGGTTTAA

**Protein Sequence:**

>RC202258 protein sequence  
 Red=Cloning site Green=Tags(s)

MEESGIETTPPGTPPPNPAGLAATAMSSTPVLAAATSSFSPPNVSSMESFPPLAYSTPQPPLPPVRPSAP  
 LPFVPPPVPVSVPLVTSMPVSPSTAAAFGNPPVSHFPPSTSAPNTLLPAPPSGPPISGFVSGSTYDI  
 TRGHAGRAPQTLMPFSAPSGLLPTPITQQASLTSLAQGTTSAITFPEEQEDPRI TRGQDEASAG  
 GIWGF IKGVAGNPMVKS VLDKTKHSVESMITTLDPGMAPYIKSGGELDIVVTSNKEVKVA AVRDAFQEVF  
 GLAVVVG EAGQSN IAPQPVG YAAGL KGAQERIDSLRRTGVIHEKQTAVSVENFIAELL PDKWFDIGCLV  
 EDPVHGIHLETF TQATPVPLEFVQQAQSLTPQDYNLRWSGLLVTVGEVLEKSLLNVSRTDWHMAFTGMSR  
 RQMIYSAARAIAGMYKQRLPPRTV

TRTRPLEQKLISEEDLAANDILDYKDDDDKV

**Chromatograms:**

[https://cdn.origene.com/chromatograms/mk6309\\_g01.zip](https://cdn.origene.com/chromatograms/mk6309_g01.zip)

**Restriction Sites:**

Sgfl-Mlul

**Cloning Scheme:**


**ACCN:** NM\_130809

**ORF Size:** 1332 bp

**OTI Disclaimer:** The molecular sequence of this clone aligns with the gene accession number as a point of reference only. However, individual transcript sequences of the same gene can differ through naturally occurring variations (e.g. polymorphisms), each with its own valid existence. This clone is substantially in agreement with the reference, but a complete review of all prevailing variants is recommended prior to use. [More info](#)

**OTI Annotation:** This clone was engineered to express the complete ORF with an expression tag. Expression varies depending on the nature of the gene.

**Components:** The ORF clone is ion-exchange column purified and shipped in a 2D barcoded Matrix tube containing 10ug of transfection-ready, dried plasmid DNA (reconstitute with 100 ul of water).

- Reconstitution Method:**
1. Centrifuge at 5,000xg for 5min.
  2. Carefully open the tube and add 100ul of sterile water to dissolve the DNA.
  3. Close the tube and incubate for 10 minutes at room temperature.
  4. Briefly vortex the tube and then do a quick spin (less than 5000xg) to concentrate the liquid at the bottom.
  5. Store the suspended plasmid at -20°C. The DNA is stable for at least one year from date of shipping when stored at -20°C.

**RefSeq:** [NM\\_130809.5](#)

**RefSeq Size:** 4699 bp

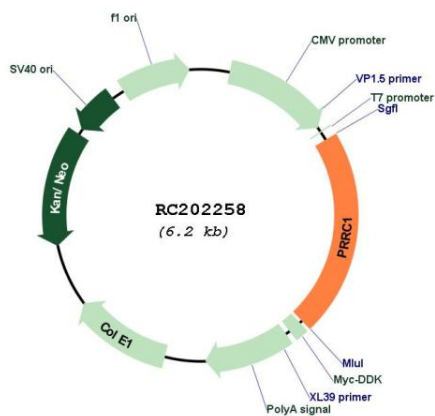
**RefSeq ORF:** 1338 bp

**Locus ID:** 133619

**UniProt ID:** [Q96M27](#)

Cytogenetics: 5q23.2  
 MW: 46.6 kDa

**Product images:**



Circular map for RC202258