

## Product datasheet for **RC202256**

### **RTF1 (NM\_015138) Human Tagged ORF Clone**

#### **Product data:**

Product Type:	Expression Plasmids
Product Name:	RTF1 (NM_015138) Human Tagged ORF Clone
Tag:	Myc-DDK
Symbol:	RTF1
Synonyms:	GTL7; KIAA0252
Mammalian Cell Selection:	Neomycin
Vector:	pCMV6-Entry (PS100001)
E. coli Selection:	Kanamycin (25 ug/mL)



[View online »](#)

**ORF Nucleotide Sequence:**

>RC202256 ORF sequence  
 Red=Cloning site Blue=ORF Green=Tags(s)

TTTTGTAATACGACTCACTATAGGGCGGCCGGAATTCGTCGACTGGATCCGGTACCGAGGAGATCTGCC  
 GCC**CGGATCGCC**

ATGAAGAAACAGGCCAACAAAACGCCTCCTCAGCGAGTTCAGACAAAGACAGTTCAGCTGAGAGCTCAG  
 CCCCTGAGGAAGGTGAAGTGTCAGACTCTGACAGCAACAGCTCCTCTCCAGTTCAGATTCAGACTCTTC  
 CTCAGAAGATGAAGAGTTCATGATGGCTATGGAGAAGACCTCATGGGAGATGAGGAAGACAGGGCCCGT  
 CTGGAACAGATGACAGAGAAAGAGAGAGCAAGAAGTGTCAATCGCATAGAGAAGAGGGAGGTGTTGA  
 AAAGAAGATTTGAAATCAAGAAAAAACTAAAAACAGCCAAAAAGAAAGAAAGAAAAAGAAAAA  
 GCAAGAAGAGGAGCAAGAAAAGAAAAAACTGACACAGATTCAAGAATCTCAGGTAACATCCACAACAAG  
 GAACGGCGTTCGAAGCGGATGAGAACTAGACAAGAAATCTCAAGCCATGGAGGAGCTAAAAGCAGAGC  
 GAGAAAAACGAAAGAACAGAACAGCTGAGCTCCTTGCCAAAAACAGCCATTAACCAGTGAGGTCTA  
 CTCTGATGATGAAGAGGAGGAAGAGGATGACAAATCCAGTGAAAAGTCAAGCCGCTCATCACGAACATCA  
 TCGTCTGATGAAGAAGAGGAGAAAGAAGAGATCCCTCCAAATCCAACCAAGTTTCTTACCTGAAGAAT  
 TGAATCGGGTTCGATTATCACGGCATAAGCTAGAACGCTGGTGTACATGCCCTTCTTTGCTAAAACGT  
 CACAGGATGTTTTGTGCGGATTGGCATCGGAAACCACAACAGCAAACAGTTTACCGGGTCGCTGAGATT  
 ACGGGTGTGTGGAACCTGCCAAAGTTTACCAACTAGGTGGCACCAGAACAAACAAAGGGCTGCAACTAC  
 GGCATGGCAATGACCAACGCGTGTCCGTTTAGAGTTTGTCTCAAACCAAGAATTCACCGAAAGTGAGTT  
 TATGAAGTGGAAAGAAGCGATGTTCTCTGCTGGCATGCAGTTGCCACTCTAGATGAAATCAATAAAAAG  
 GAATTAATCTATAAAGAAGCTCTTAATTATAAATCAATGATCAGGACATTGAAGAGATTGTAAGAGAGA  
 AAGAAAGGTTTCAGAAAAGCTCCACCCAACTACGCTATGAAGAAGACTCAGCTACTGAAGGAAAAGGCCAT  
 GGCTGAGGACCTGGGGGATCAGGACAAGGCCAAACAAATCCAAGATCAACTGAATGAGCTGGAGGAACGG  
 GCAGAGGCCCTGGACCGCAGCGGACCAAGAACATATCCGCTATCAGTTACATCAACCAGCGGAACCGGG  
 AGTGGAACATTGTAGAGTCTGAGAAGGCCCTTGTGGCTGAAAAGTCAACATGAAAAACCAACAGATGGA  
 TCCCTTTACTCGCGGCAGTGCAAGCCTACCATCGTTTCTAATCCAGAGACCCAGCTGTTCAAGCTGCC  
 ATCTTGGCCCAGCTGAATGCAAATACGGTCTGGAGTGTACCAGATGCTCAAAGGAAATGAGCAAGG  
 GTCAAGGCAAAGATAAGATTTGAATTTAAGTCAAGCAGCCAGTGACCTCTCAGAAGATCTGTTCAAAGTACA  
 CGATTTTGATGTGAAGATTGACTTACAAGTCCCAGCTCAGAGTCAAAGGCTTTAGCCATCACCTCCAAG  
 GCTCCGCCAGCCAAGGATGGGGCTCCAAGGAGATCTCTGAACTTGAAGACTACAAAAACGACGAGGGC  
 TTATT

AG**CGGACCG**ACGCGTACGCGGCCGCTCGAGCAGAAAACCTCATCTCAGAAGAGGATCTGGCAGCAAATGATATCC  
 TGGATTACAAGGATGACGACGATAAGGTTTAA

**Protein Sequence:**

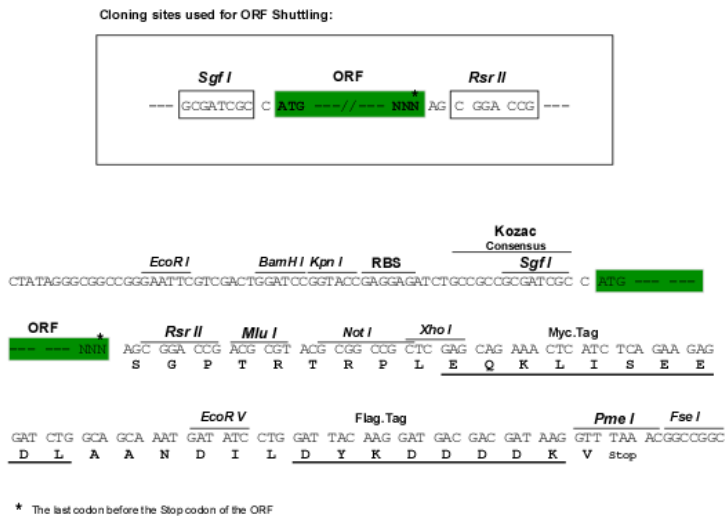
>RC202256 protein sequence  
 Red=Cloning site Green=Tags(s)

MKKQANKTASSGSSDKDSSAESSAPEEGEVSDSDSNSSSSSDSDSSSEDEEFHDGYGEDLMGDEEDRAR  
 LEQMTEKEREQELFNRIEKREVLKRRFEIKKKLKTAKKKEKKEKKKQEEQEKKKLTQIQESQVTSNKK  
 ERRSKRDEKLDKKSQAMEELKAEREKRNRTAELLAKKQPLKTSEVYSDDEEEEDDKSSEKSDRSRSTS  
 SSDEEEKEEIPPKSQPVSLPEELNRVRLSRHKLERWCHMPFFAKVTGCFVRIIGIHNHNSKPVYRVAEI  
 TGVVETAKVYQLGGTRTNKQLQRHGNDRVFRLEFVSNQEFTESEFMKWKEAMF SAGMQLPTLDEINKK  
 ELSIKEALNYKFNDQDIEEIVKEKERFRKAPPNYAMKKTQLLKEKAMAEDLGDQDKAKQIQDQLNELEER  
 AEALDRQRTKNISAIISYINQRNREWNIVESEKALVAESHNMKNQMDPFRTRQCKPTIVSNSRDPVQAA  
 ILAQLNAKYGSGVLPDAPKEMSKGQGDKDLNSKSASDLSDELFKVHDFDVKIDLQVPSSSEKALAITSK  
 APPAKDGAPRRSLNLEDYKKRRGLI

SGP**TRTRPLEQKLI**SEEDLAANDILDYKDDDDKV

**Restriction Sites:**

Sgfl-RsrII

**Cloning Scheme:**


**ACCN:** NM\_015138

**ORF Size:** 1755 bp

**OTI Disclaimer:** Due to the inherent nature of this plasmid, standard methods to replicate additional amounts of DNA in E. coli are highly likely to result in mutations and/or rearrangements. Therefore, OriGene does not guarantee the capability to replicate this plasmid DNA. Additional amounts of DNA can be purchased from OriGene with batch-specific, full-sequence verification at a reduced cost. Please contact our customer care team at [custsupport@origene.com](mailto:custsupport@origene.com) or by calling 301.340.3188 option 3 for pricing and delivery.

The molecular sequence of this clone aligns with the gene accession number as a point of reference only. However, individual transcript sequences of the same gene can differ through naturally occurring variations (e.g. polymorphisms), each with its own valid existence. This clone is substantially in agreement with the reference, but a complete review of all prevailing variants is recommended prior to use. [More info](#)

**OTI Annotation:** This clone was engineered to express the complete ORF with an expression tag. Expression varies depending on the nature of the gene.

**Components:** The ORF clone is ion-exchange column purified and shipped in a 2D barcoded Matrix tube containing 10ug of transfection-ready, dried plasmid DNA (reconstitute with 100 ul of water).

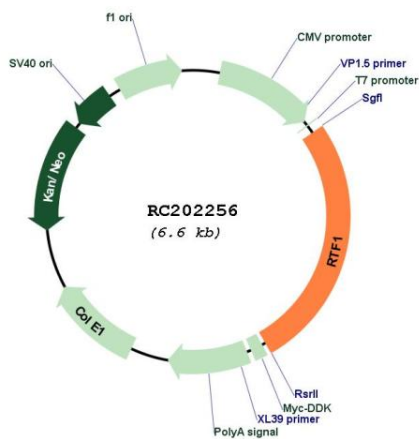
- Reconstitution Method:**
1. Centrifuge at 5,000xg for 5min.
  2. Carefully open the tube and add 100ul of sterile water to dissolve the DNA.
  3. Close the tube and incubate for 10 minutes at room temperature.
  4. Briefly vortex the tube and then do a quick spin (less than 5000xg) to concentrate the liquid at the bottom.
  5. Store the suspended plasmid at -20°C. The DNA is stable for at least one year from date of shipping when stored at -20°C.

**RefSeq:** [NM\\_015138.2](#)

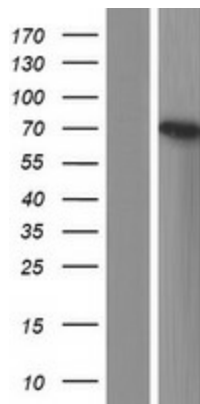
RefSeq Size: 5038 bp  
 RefSeq ORF: 2133 bp  
 Locus ID: 23168  
 UniProt ID: [Q92541](#)  
 Cytogenetics: 15q15.1  
 MW: 67.2 kDa

**Gene Summary:** This locus may represent a gene involved in regulation of transcription elongation and chromatin remodeling, based on studies of similar proteins in other organisms. The encoded protein may bind single-stranded DNA. [provided by RefSeq, Sep 2010]

### Product images:



Circular map for RC202256



Western blot validation of overexpression lysate (Cat# [LY414774]) using anti-DDK antibody (Cat# [TA50011-100]). Left: Cell lysates from untransfected HEK293T cells; Right: Cell lysates from HEK293T cells transfected with RC202256 using transfection reagent MegaTran 2.0 (Cat# [TT210002]).