

Product datasheet for **RC202241**

SRPR alpha (SRPRA) (NM_003139) Human Tagged ORF Clone

Product data:

Product Type:	Expression Plasmids
Product Name:	SRPR alpha (SRPRA) (NM_003139) Human Tagged ORF Clone
Tag:	Myc-DDK
Symbol:	SRPR alpha
Synonyms:	DP; Sralpha; SRPR
Mammalian Cell Selection:	Neomycin
Vector:	pCMV6-Entry (PS100001)
E. coli Selection:	Kanamycin (25 ug/mL)



[View online »](#)

ORF Nucleotide Sequence:

>RC202241 representing NM_003139
 Red=Cloning site Blue=ORF Green=Tags(s)

TTTTGTAATACGACTCACTATAGGGCGGCCGGAATTCGTCGACTGGATCCGGTACCGAGGAGATCTGCC
 GCC**CGGATCGCC**

ATGCTCGACTTCTCACCATTTTCTCCAAGGGCGGGCTTGTGCTCTGGTCTCCAGGGCGTTAGCGACT
 CATGCACCGGACCGTTAACGCGTTGATTTCGTTCCGTGCTGCTGCAGGAACGGGGAGGTAACAACCTCCTT
 CACCCATGAGGCACTCACACTCAAGTATAAACTGGACAACCAGTTTGAGCTGGTGTGGTTGGTTTT
 CAGAAGATCCTGACACTGACATATGTAGACAAATTGATAGATGACGTGCATCGGCTGTTTCGGGACAAGT
 ACCGCACAGAGATCCAACAGCAAAGTGTCTTAAGTTTATTAATGGCACTTTTGATTTCCAAAATGACTT
 CCTGCGGCTCCTTCGTGAAGCAGAGGAGAGCAGTAAGATCCGTGCTCCACTACCATGAAGAAATTTGAA
 GATTCTGAAAAGGCCAAGAAACCTGTGAGGTCCATGATTGAGACACGGGGGAAAAGCCCAAGGAAAAAG
 CAAAGAATAGCAAAAAAGGGGCCAAGAAGGAAGTTCTGATGGTCTTTGGTACCAGCAAACCAGT
 CCCTGCAGAAAAGTCAGGTCTTCCAGTGGTCTGAGAACGGAGTAGAATTTCCAAAGAGGAGCTGATC
 CGCAGGAAGCGCAGGAGTTCATTGAGAAGCATGGGAGGGGTATGGAGAAGTCCAACAAGTCCACGAAGT
 CAGATGCTCCAAAGGAGAAGGGCAAAAAAGCACCCGGGTGTGGGAACTGGTGGCTGTGCTAACAAAGA
 AGTGTGGATTACAGTACTCCCACCACCAATGGAACCCCTGAGGCTGCCTTGTCTGAGGACATCAACCTG
 ATTCGAGGGACTGGGTCTGGGGGCAGCTTCAGGATCTGGACTGCAGCAGCTCTGATGACGAAGGGCTG
 CTCAAACTCTACCAACCTAGTGCACCAAGGGAACACTGGGTGGCATGTTTGGTATGCTGAAGGGCT
 TGTGGGTTCAAAGAGCTTGAGTCGTGAAGACATGGAATCTGTGCTGGACAAGATGCGTGATCATCTCATT
 GCTAAGAACGTGGCTGCAGACATTGCCGTCCAGCTCTGTGAATCTGTTGCCAACAAGTTGGAAGGGAAGG
 TGATGGGACGTTTCAGCACGGTGACTTCCACAGTAAAGCAAGCCCTACAGGAGTCCCTGGTGCAGATTCT
 GCAGCCACAGCGTCGTGTAGACATGCTCCGGGACATCATGGATGCCAGCGTCCGACGCGCCTTATGTC
 GTCACCTTCTGCGCGTTAATGGAGTGGGAAATCTACTAATCTTGCCAAGATTTCTTCTGGTTGTTAG
 AGAATGGCTTCAGTGCCTCATTGCTGCCTGTGATACATTTCTGCTGGGGCCGTGGAGCAGCTGCGTAC
 ACACACCCGGCGTTTGTAGTGCCTACACCCTCCAGAGAAGCATGGTGGCCGACCATGGTGCAGTTGTTT
 GAAAAGGGCTATGGCAAGGATGCTGCTGGCATTGCCATGGAAGCCATTGCTTTTGCACGTAACCAAGGCT
 TTGACGTGGTGTGGTGGACACGGCAGGCCGATGCAAGACAATGCCCTCTGATGACTGCCCTGGCCAA
 ACTCATTACTGTCAATACACCTGATTTGGTGTGTTTGTAGGAGAAGCCTTAGTAGGCAATGAAGCCGTG
 GACCAGCTGGTCAAGTTCAACAGAGCCTTGGCTGACCATTCTATGGCTCAGACACCTCGGCTCATTGATG
 GCATTGTTCTTACCAATTTGATACCATTGATGACAAGGTGGGAGCTGCTATTTCTATGACGTACATCAC
 AAGCAAACCCATCGTCTTTGTGGGCACCGCCAGACCTACTGTGACCTACGCAGCCTCAATGCCAAGGCT
 GTGGTGGCTGCCCTCATGAAGGCT

AG**CGGACCG**ACGCGTACGCGGCCGCTCGAGCAGAACTCATCTCAGAAGAGGATCTGGCAGCAAATGATATCC
 TGGATTACAAGGATGACGACGATAAGGTTTAA

Protein Sequence: >RC202241 representing NM_003139
Red=Cloning site Green=Tags(s)

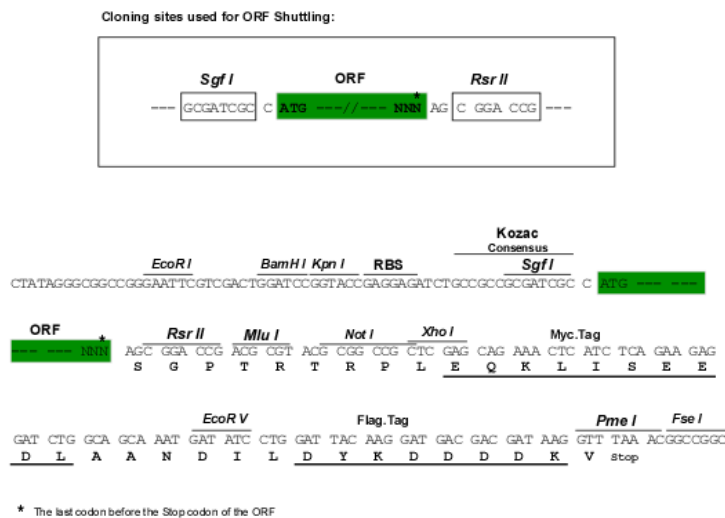
MLDFFTIFSKGGLVLCFQGVSDSCTGPVNALIRSVLLQERGGNSFTHEALTLKYKLDNQFELVFVVG
 QKILTLTYVDKLIIDVHRLFRDKYRTEIQQSALSLNGTFDFQNDLRLREAEESKIRAPTTMKKFE
 DSEKAKKPVRSMIETRGEKPKAKNSKKKGAKKEGSDGPLATSKPVPAEKSGLPVGPENGVELSKEELI
 RRKREEFIQKHGRGMEKSNKSTKSDAPKEKGKAPRVWELGGCANKEVLDYSTPTTNGTPEAALSEDINL
 IRGTGSGGQLQDLDCSSDDEGAAQNSTKPSATKGTGGMFGMLKGLVGSKSLSREDMESVLDKMRDHLI
 AKNVAADIAVQLCESVANKLEGKVMGTFSTVTSTVKQALQESLVQILQPQRRVDMLRDIMDAQRRQRPYV
 VTFCGVNGVGKSTNLAKISFWLLENGFSVLIACDTRFRAGAVEQLRTHTRRLSALHPPEKHGGRTMVQLF
 EKGYGKDAAGIAMEAIAFARNQGFVVLDVDTAGRMQDNAPLMTALAKLITVNTPDVLFVGEALVNEAV
 DQLVKFNALADHSMAQTPRLIDGIVLTKFDTIDDKVGAAISMTYITSKPIVFGTGQTYCDLRSNAKA
 VVAALMKA

SGPTRRRLEQKLI SEEDLAANDILDYKDDDDKV

Chromatograms: https://cdn.origene.com/chromatograms/mg4162_b01.zip

Restriction Sites: SgfI-RsrII

Cloning Scheme:



ACCN: NM_003139

ORF Size: 1914 bp

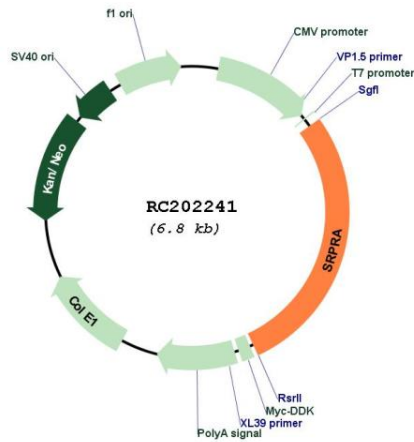
OTI Disclaimer: The molecular sequence of this clone aligns with the gene accession number as a point of reference only. However, individual transcript sequences of the same gene can differ through naturally occurring variations (e.g. polymorphisms), each with its own valid existence. This clone is substantially in agreement with the reference, but a complete review of all prevailing variants is recommended prior to use. [More info](#)

OTI Annotation: This clone was engineered to express the complete ORF with an expression tag. Expression varies depending on the nature of the gene.

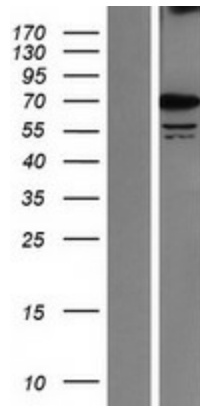
Components: The ORF clone is ion-exchange column purified and shipped in a 2D barcoded Matrix tube containing 10ug of transfection-ready, dried plasmid DNA (reconstitute with 100 ul of water).

Reconstitution Method:	<ol style="list-style-type: none">1. Centrifuge at 5,000xg for 5min.2. Carefully open the tube and add 100ul of sterile water to dissolve the DNA.3. Close the tube and incubate for 10 minutes at room temperature.4. Briefly vortex the tube and then do a quick spin (less than 5000xg) to concentrate the liquid at the bottom.5. Store the suspended plasmid at -20°C. The DNA is stable for at least one year from date of shipping when stored at -20°C.
Note:	Plasmids are not sterile. For experiments where strict sterility is required, filtration with 0.22um filter is required.
RefSeq:	NM_003139.4
RefSeq Size:	2958 bp
RefSeq ORF:	1917 bp
Locus ID:	6734
UniProt ID:	P08240
Cytogenetics:	11q24.2
Domains:	SRP54, AAA, SRP-alpha_N
Protein Families:	Druggable Genome
Protein Pathways:	Protein export
MW:	69.6 kDa
Gene Summary:	The gene encodes a subunit of the endoplasmic reticulum signal recognition particle receptor that, in conjunction with the signal recognition particle, is involved in the targeting and translocation of signal sequence tagged secretory and membrane proteins across the endoplasmic reticulum. Alternative splicing results in multiple transcript variants. [provided by RefSeq, Apr 2010]

Product images:



Circular map for RC202241



Western blot validation of overexpression lysate (Cat# [LY418871]) using anti-DDK antibody (Cat# [TA50011-100]). Left: Cell lysates from untransfected HEK293T cells; Right: Cell lysates from HEK293T cells transfected with RC202241 using transfection reagent MegaTran 2.0 (Cat# [TT210002]).