

Product datasheet for **RC202239**

PRR35 (NM_145270) Human Tagged ORF Clone

Product data:

Product Type:	Expression Plasmids
Product Name:	PRR35 (NM_145270) Human Tagged ORF Clone
Tag:	Myc-DDK
Symbol:	PRR35
Synonyms:	C16orf11; LA16c-366D1.2
Mammalian Cell Selection:	Neomycin
Vector:	pCMV6-Entry (PS100001)
E. coli Selection:	Kanamycin (25 ug/mL)



[View online »](#)

ORF Nucleotide Sequence:

>RC202239 ORF sequence
 Red=Cloning site Blue=ORF Green=Tags(s)

TTTTGTAATACGACTCACTATAGGGCGGCCGGGAATTCGTCGACTGGATCCGGTACCGAGGAGATCTGCC
 GCC**CGATCGCC**

ATGTCGCGGGAGGCGGGCTCATGCCGCGTGGGCACAGGGGCGAGGGCGCGGTCTCGGAAGCCCAAGAAGC
 CACACTACATCCCGCGGCCCTGGGGCAAACCTACAACACTCAAATGCTTCCAGTGCCCTTCACCTGCCT
 GGAGAAGTCACACCTCTACAACCACATGAAGTACAGCCTCTGCAAGGACTCCCTGTCCCTGCTGCTAGAC
 TCCCCAGACTGGGCGTGCCGCGGTGGTCCACCACGCCTAGGCCCCACGCACCCACCCAGACCGCCCTG
 GGGAGTCCGACCCCGGCAGGCAACCCAGGGAGCACGGCCACAGGTGCTGCCCCGCGCCTGACCTCGT
 GGTGCGCCGACATCCACTCCCTGCACTGTGGCGGAGGCCCAAGTCCAGGGCCAAGGGTCCCCAGGGCCA
 CCACCCCTGTGGCTAGGGCCACCCGAAGGGTCCCGGCCCCAGTGGGCTCCTGCCTGAGTCGTGGAAGC
 CGGGGATGGGAGGGGACCAAGGGGCGTGGGTGCGGGGGACATGGCCTCAGCAGGCCCTGAGGGCAGCGT
 CCCCTGCTATCCCCGCCTGCCAGGGGAGTTCCCTGAGGCCACAGCCTCCACCTGTCTGTGCTGGGC
 GTCAACTACCCGCTCAGCCCCGGCCTTCTCCTACTTGGGGCCCTCACTGGCCGCTGCAGCCCATGTGC
 CCTTCTGGCCTCGGCCAGCCCCCTGTGCCCCCGGCCACGGCCTTCCCAGCCGTGCAGCCCCCTCAGCG
 CCCCACCCCGGCCCCCGCCTGTACTACCCGCTGCTTCTGGAGCACACTCTGGGGCTGCCAGCAGGCAAA
 GCTGCCCTTGCCAAGGCCCTGTCTCCCCAGGAGCCCTCTGGGACTCCGGCTCCTGGCCTGCTGAAGG
 TGCCAGTTCAGGGCTGGGGCCCTGGCCCGAGTACCCCCAGGGACCCAGGGCAGGAGGGGGAGCTGGA
 GCGGGCAGCCAGAGTGACCCAGGAGGAGGCTGTCCCTGGGAAGCAGGCTGGAGCTTCCGAAGGCATCC
 CCCAGCCTGACAAGGTTCTGTTCCCGAGCAGCCTGCCACCCGGCTCCTGTGTGCTGTGGCCTGAGG
 ACGGGGATCCAGCGGCCCTGAGACCCCGCCCTGAGGGCCCTCCCTGCAGCCACGGGGCCCAAGT
 GCCAGGAAGCCCGAGCATGTGGGCGAGGACTGACCCGAGCCCTCGGTGACTACGCCAGGGTGGAGCAG
 CGCCTGGGACAGTTGGGGCCCGGGGGGCTGGCCCGAGACCCTGCGGGAGCAGCTGGGCAAGATCC
 GCCTGGAGCTGCTCACCATTACCCAGGCGCTGGAGCAGGCCGTGAGGCCGCCAGACGCCCTCGACCT
 CTCTGTGAAACGTGCGCCCGCCAAGGGGCCAGGCTCTTGGAGAGGCGTGGGGCGGCCGAGCTGGGT
 CCCGTGTTGACCGGGGACCCCGAGCCACCCGGCATGCTGGGCCCTGCAGCGCCCAACCCTTCTCTG
 GCCACACCACCAAGTGTGAGGCCGACTCCAGCGTCCCACCCAGGGCTCCCTCGCAGCCCCAGATGA
 CCCTGTCATTCTGGCAGTGGCTGGGGCACCTGTGTTGCGACGAGGAGTCCCAGACCCCTGAGGCTGTC
 TGTGGCCTGCAGAGCCCCAGGGCGCCGAGGTC

ACGCGTACGCGGCCGCTCGAGCAGAAACTCATCTCAGAAGAGGATCTGGCAGCAAATGATATCCTGGATT
 ACAAGGATGACGACGATAAGGTTTAA

Protein Sequence:

>RC202239 protein sequence
 Red=Cloning site Green=Tags(s)

MSREAGSCRVTGARARSRPKPKPHYIPRPWPKPYNYKCFQCPFTCLEKSHLYNHMKYSLCKDSL SLLLD
 SPDWACRRGSTTPRHAPTPDRPGE SDPGRQPQGARPTGAAPAPDLVVADIHSLHCGGGPKSRAKGSPP
 PPPVARATRKGPSPGLLPESWKPGMGDPRGVGAGDMASAGPEGSVPCYPPAPGEFPEASHLSLLG
 VNYPLSPGLFSYLGPSLAAAHVFLASASPLLPATAFPAVQPPQRPTAPRLYYPLLEHTLGLPAGK
 AALAKAPVSPRSPGTPAPGLLKVPVPLGPWPRVTPRDPGQEGELERAAQSDPRRRLSLGSRLELPKAS
 PSLTRFCSRSSLPTGSSVMLWPEDGDPGGPETPGPEGLPLQPRGPVPGSPEHVGEDLTRALGDYARVEQ
 RLGLGPAGGLAPRPLREQLGKIRLELLTIHQALEQAVRPPDAPLDL SVKRAPAKGPQALGEAWGRPELG
 PVLTTGGTPEPPGMLGPAAPQPFSGHTTKCEADSSVPPGLPLAAPDDPVI PGSGWGT CVATRSSQTPEAV
 CGLQSPQGAEV

TRTRPLEQKLISEEDLAANDILDYKDDDDKV

Chromatograms:

https://cdn.origene.com/chromatograms/mk6540_h05.zip

Restriction Sites:

Sgfl-Mlul

Cloning Scheme:



ACCN: NM_145270

ORF Size: 1713 bp

OTI Disclaimer: The molecular sequence of this clone aligns with the gene accession number as a point of reference only. However, individual transcript sequences of the same gene can differ through naturally occurring variations (e.g. polymorphisms), each with its own valid existence. This clone is substantially in agreement with the reference, but a complete review of all prevailing variants is recommended prior to use. [More info](#)

OTI Annotation: This clone was engineered to express the complete ORF with an expression tag. Expression varies depending on the nature of the gene.

Components: The ORF clone is ion-exchange column purified and shipped in a 2D barcoded Matrix tube containing 10ug of transfection-ready, dried plasmid DNA (reconstitute with 100 ul of water).

- Reconstitution Method:
1. Centrifuge at 5,000xg for 5min.
 2. Carefully open the tube and add 100ul of sterile water to dissolve the DNA.
 3. Close the tube and incubate for 10 minutes at room temperature.
 4. Briefly vortex the tube and then do a quick spin (less than 5000xg) to concentrate the liquid at the bottom.
 5. Store the suspended plasmid at -20°C. The DNA is stable for at least one year from date of shipping when stored at -20°C.

Note: Plasmids are not sterile. For experiments where strict sterility is required, filtration with 0.22um filter is required.

RefSeq: [NM_145270.3](#)

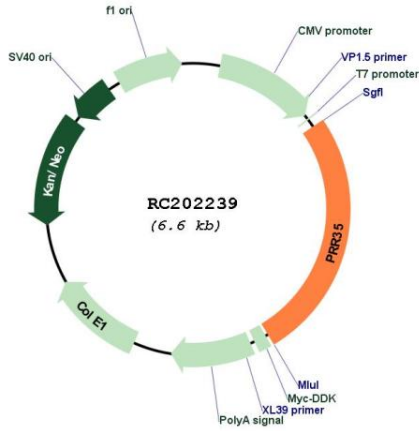
RefSeq Size: 2245 bp

RefSeq ORF: 1716 bp

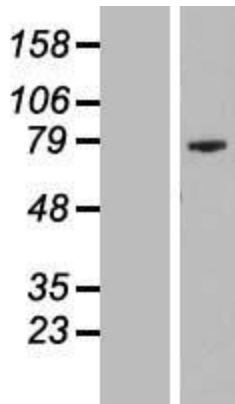
Locus ID: 146325

UniProt ID: [P0CG20](#)
 Cytogenetics: 16p13.3
 MW: 59.4 kDa

Product images:



Circular map for RC202239



Western blot validation of overexpression lysate (Cat# [LY407995]) using anti-DDK antibody (Cat# [TA50011-100]). Left: Cell lysates from untransfected HEK293T cells; Right: Cell lysates from HEK293T cells transfected with RC202239 using transfection reagent MegaTran 2.0 (Cat# [TT210002]).