

Product datasheet for **RC202238**

MYCBP (NM_012333) Human Tagged ORF Clone

Product data:

Product Type: Expression Plasmids
Product Name: MYCBP (NM_012333) Human Tagged ORF Clone
Tag: Myc-DDK
Symbol: MYCBP
Synonyms: AMY-1
Mammalian Cell Selection: Neomycin
Vector: pCMV6-Entry (PS100001)
E. coli Selection: Kanamycin (25 ug/mL)
ORF Nucleotide Sequence: >RC202238 ORF sequence
Red=Cloning site Blue=ORF Green=Tags(s)

TTTTGTAATACGACTCACTATAGGGCGGCCGGAATTCGTCGACTGGATCCGGTACCGAGGAGATCTGCC
GCC**CGATCGCC**

ATGGCCATTACAAGCCGCCGACTCGAAGCGTGAGCAGTTCGGAGGTACTTGGAGAAGTCGGGGTGC
TGGACACGCTGACCAAGGTGTTGGTAGCCTTATGAAGAACCAGAGAACTAACAGTGCCTTGGATT
TTAAAGCATCACTTAGGAGCTGCTACTCCAGAAAATCCAGAAATAGAGCTGCTCGCTAGAACTGGCC
GAAATGAAAGAGAAGTATGAAGCTATTGTAGAAGAAAATAAAAACTGAAAGCAAAGCTTGCTCAGTATG
AACCACCTCAGGAGGAGAAGCGTCTGAA

ACGCGTACGCGGCCGCTCGAGCAGAACTCATCTCAGAAGAGGATCTGGCAGCAAATGATATCCTGGATT
ACAAGGATGACGACGATAAGGTTTAA

Protein Sequence: >RC202238 protein sequence
Red=Cloning site Green=Tags(s)
MAHYKAADSKREQFRRYLEKSGVLDLTKVLVALYEEPEKPNALDFLKHHLGAATPENPEIELLRLELA
EMKEKYEAIVEENKCLKAKLAQYEPPEEKRAE

TRTRPLEQKLISEEDLAANDILDYKDDDDKV

Chromatograms: https://cdn.origene.com/chromatograms/mk6302_d03.zip

Restriction Sites: SgfI-MluI



[View online »](#)

Cloning Scheme:


ACCN: NM_012333

ORF Size: 309 bp

OTI Disclaimer: The molecular sequence of this clone aligns with the gene accession number as a point of reference only. However, individual transcript sequences of the same gene can differ through naturally occurring variations (e.g. polymorphisms), each with its own valid existence. This clone is substantially in agreement with the reference, but a complete review of all prevailing variants is recommended prior to use. [More info](#)

OTI Annotation: This clone was engineered to express the complete ORF with an expression tag. Expression varies depending on the nature of the gene.

Components: The ORF clone is ion-exchange column purified and shipped in a 2D barcoded Matrix tube containing 10ug of transfection-ready, dried plasmid DNA (reconstitute with 100 ul of water).

Reconstitution Method:

1. Centrifuge at 5,000xg for 5min.
2. Carefully open the tube and add 100ul of sterile water to dissolve the DNA.
3. Close the tube and incubate for 10 minutes at room temperature.
4. Briefly vortex the tube and then do a quick spin (less than 5000xg) to concentrate the liquid at the bottom.
5. Store the suspended plasmid at -20°C. The DNA is stable for at least one year from date of shipping when stored at -20°C.

RefSeq: [NM_012333.5](#)

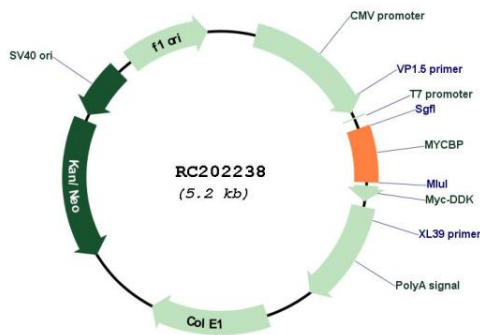
RefSeq Size: 2583 bp

RefSeq ORF: 312 bp

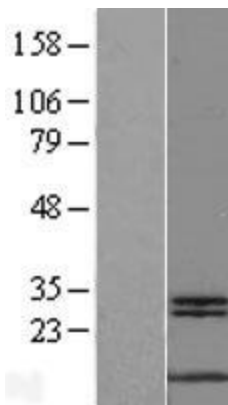
Locus ID: 26292

UniProt ID: [Q99417](#)
Cytogenetics: 1p34.3
Protein Families: ES Cell Differentiation/IPS, Transcription Factors
MW: 12 kDa
Gene Summary: The protein encoded by this gene binds to the N-terminus of the oncogenic protein C-MYC, enhancing the ability of C-MYC to activate E box-dependent transcription. The encoded protein is normally found in the cytoplasm, but it translocates to the nucleus during S phase of the cell cycle and associates with C-MYC. This protein may be involved in spermatogenesis. This gene can be silenced by microRNA-22. Two transcript variants, one protein-coding and the other probably not protein-coding, have been found for this gene. [provided by RefSeq, Nov 2011]

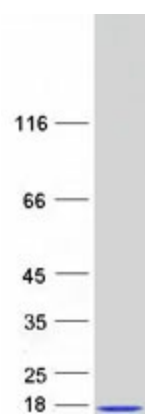
Product images:



Circular map for RC202238



Western blot validation of overexpression lysate (Cat# [LY415829]) using anti-DDK antibody (Cat# [TA50011-100]). Left: Cell lysates from untransfected HEK293T cells; Right: Cell lysates from HEK293T cells transfected with RC202238 using transfection reagent MegaTran 2.0 (Cat# [TT210002]).



Coomassie blue staining of purified MYCBP protein (Cat# [TP302238]). The protein was produced from HEK293T cells transfected with MYCBP cDNA clone (Cat# RC202238) using MegaTran 2.0 (Cat# [TT210002]).